

# Fenimore Woods Park

A Conceptual Draft Master Plan

Radnor Township

Board of Commissioners Meeting-May 20, 2019



GILMORE & ASSOCIATES, INC.  
ENGINEERING & CONSULTING SERVICES







**GILMORE & ASSOCIATES, INC.**  
ENGINEERING & CONSULTING SERVICES  
BUILDING ON A FOUNDATION OF EXCELLENCE

- Kevin Selger – Director of Landscape Architecture and Planning, Registered Landscape Architect
- TJ McIntyre – Registered Landscape Architect





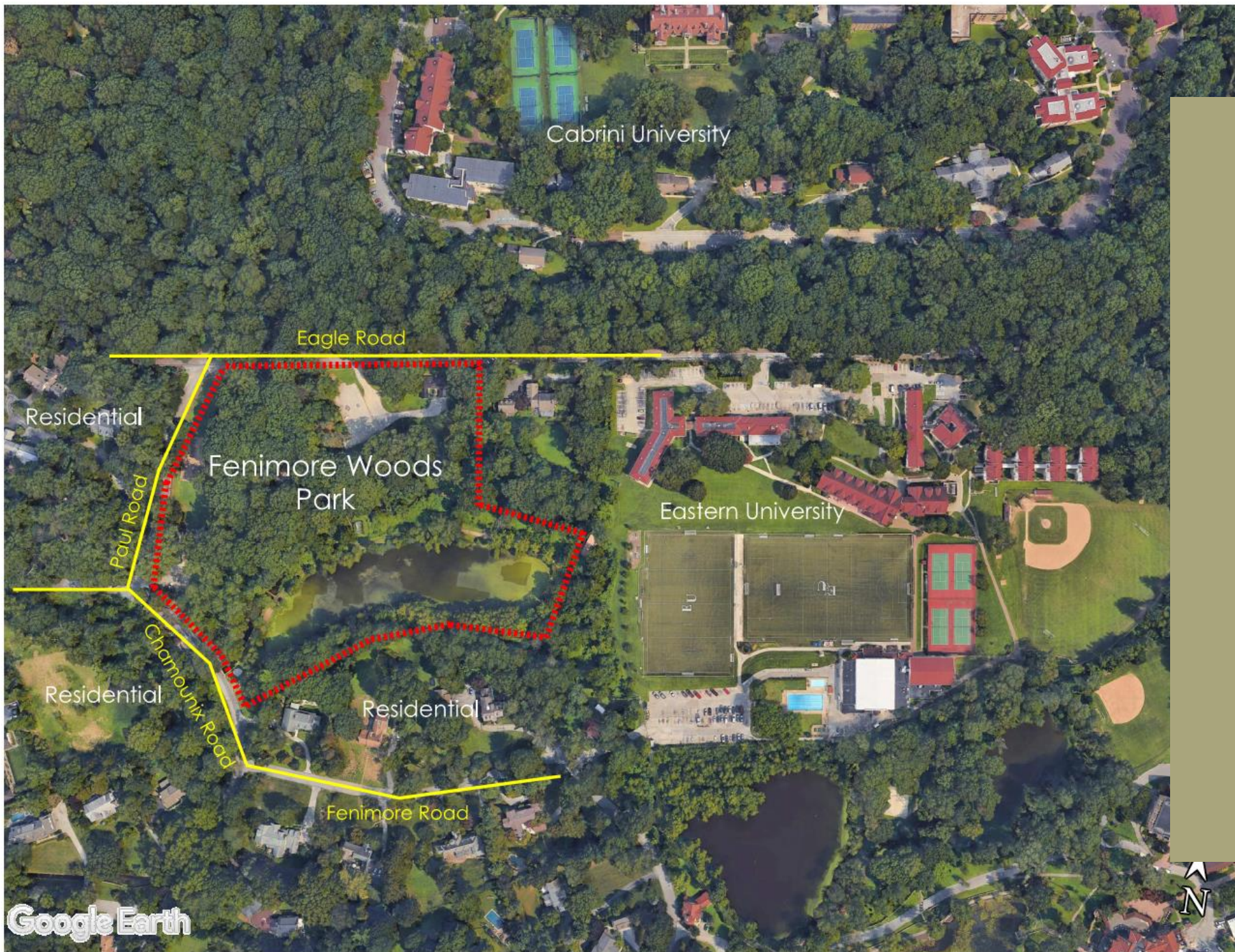
## Steps Taken:

- Board approval for project design and engineering – July 16, 2018
- Worked with Radnor Twp Administration to develop concept draft plan
- Various meetings with Residents
- Parks Board Meeting , Public Input-February 7, 2019
- Parks Board Meeting, Public Input – March 14, 2019 (Motion of support for concept plan by Parks Board, recommended to BOC
- Concept plan presentation to BOC– May 20, 2019

## Where we are now:

- BOC review and consideration of park improvement conceptual plan
- BOC consideration of a motion to bid project





# Site Context Map



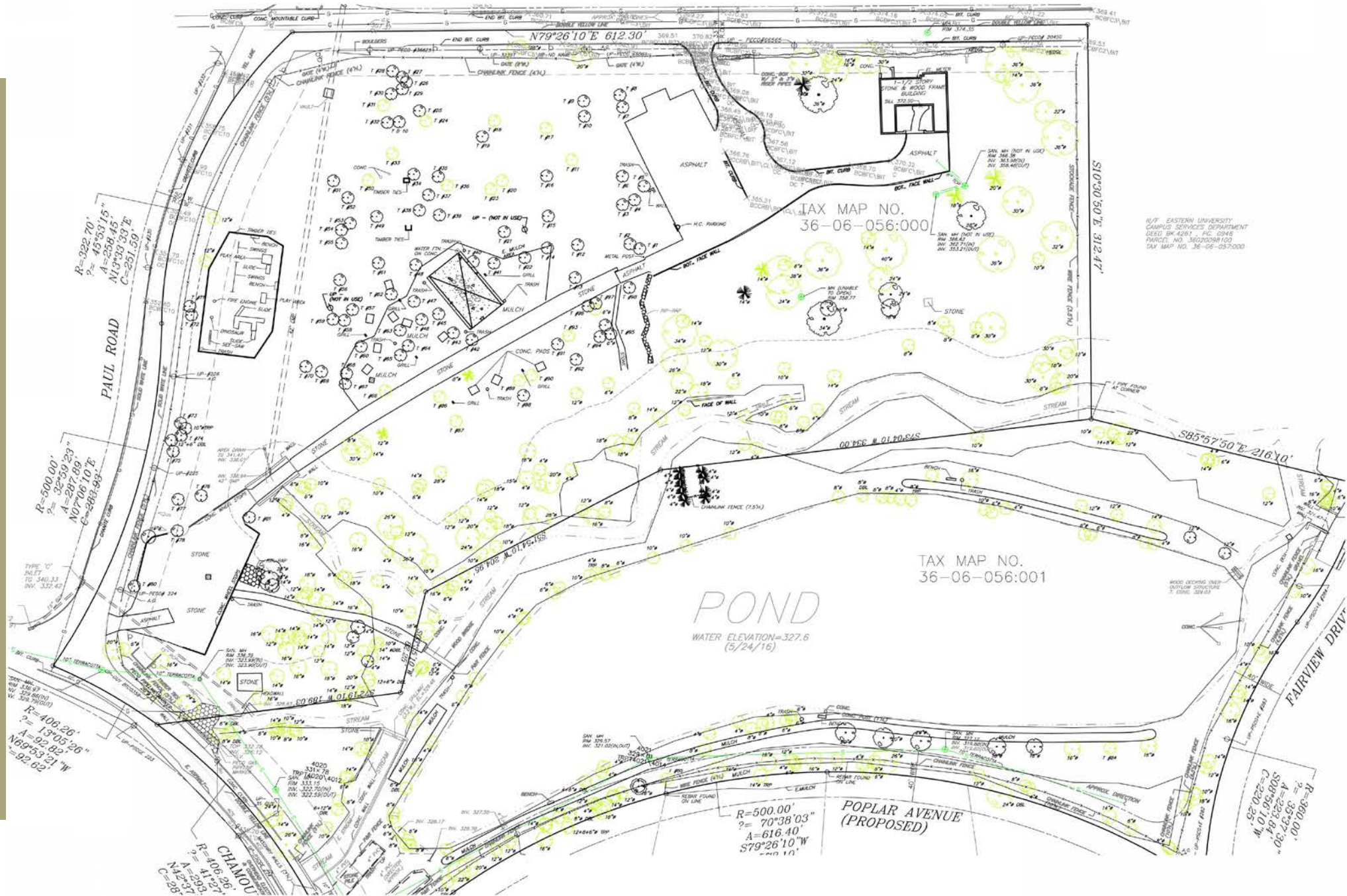
## Fenimore Woods Inventory:

- Approximately 11.5 Acres
- Contains a 2.2 Acre Pond
- Gulph Creek runs directly through the site
  - Contains both 100 and 500 year floodplains and designed floodway
- Neighbors Eastern and Cabrini Universities , as well as 4 residential homes





# Existing Conditions Plan



W/F EASTERN UNIVERSITY  
CAMPUS SERVICES DEPARTMENT  
DEED BK 4281 - PG. 0946  
PARCEL NO. 3602098100  
TAX MAP NO. 36-06-057:000



## Existing Programming:

- Playground
- Pavilion with picnic tables
- Parking
- Walking Trail around pond
- Portable bathrooms





## Site Constraints:

- Aging Infrastructure
- Flooding/Stormwater Management
- Adequate parking and site access
- ADA Accessibility (Excessive Grade Change)
- Maintaining the "Fenimore" feel
- Sensitivity to Neighbors





## Proposed Programming:

- 2 Reconfigured parking lots
- New ADA access and parking
- Replacement of existing pavilion structure with seating and adjacent bathroom
- New stone walking trail around pond
- New stone walking trail loop around upper area of the park
- Dry stream with new bridge
- Replacement of bridge to access pond area
- Improve and relocate playground
- Park landscaping/Native tree plan
- Erosion control
- Stable demolition





## What is a Dry Stream?

A dry stream is a stream bed that can be used for drainage purposes. The bed remains dry almost all the time, except during heavy rain events. During these heavy rain events, the stream acts as an vehicle to carry stormwater, avoid erosion and clean stormwater.

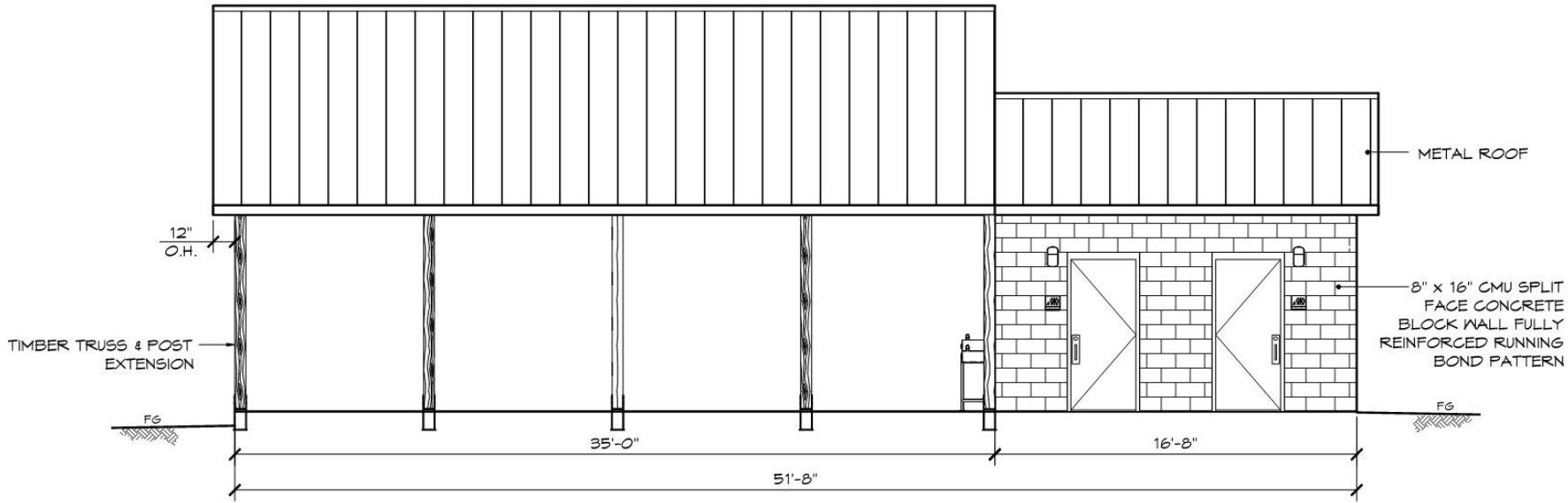




# Pavilion Examples

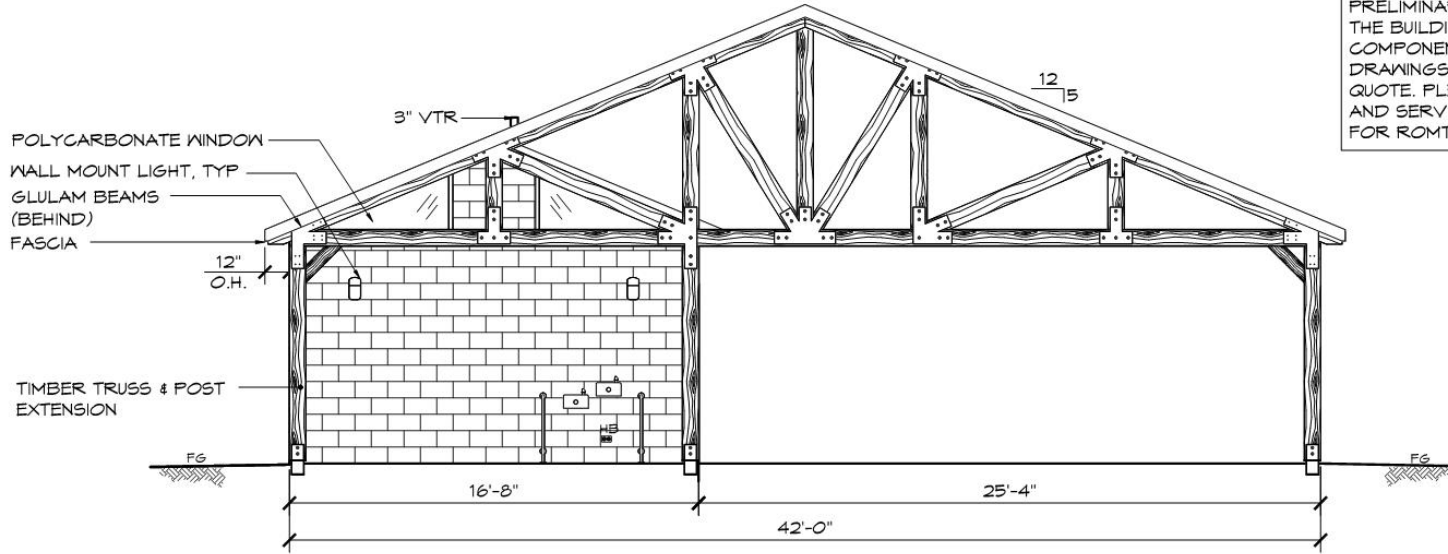






**A** ELEVATION VIEW  
SCALE: 1/4" = 1'-0"

THESE PLAN VIEW AND ELEVATION DRAWINGS ARE A PRELIMINARY ARCHITECTURAL REPRESENTATION OF THE BUILDING. ALL DIMENSIONS, FEATURES AND COMPONENTS SHOWN ON THESE PRELIMINARY DRAWINGS MAY OR MAY NOT BE PART OF THE QUOTE. PLEASE REFER TO THE "SCOPE OF SUPPLY AND SERVICES" LETTER PROVIDED WITH YOUR QUOTE FOR ROMTEC'S PROPOSED SCOPE OF SUPPLY.



**B** ELEVATION VIEW  
SCALE: 3/16" = 1'-0"

© 2018 ROMTEC, INC. ALL RIGHTS RESERVED. THESE PLANS AND DRAWINGS MAY NOT BE REPRODUCED, ADAPTED OR FURTHER DISTRIBUTED, AND NO BUILDINGS MAY BE CONSTRUCTED FROM THESE PLANS, WITHOUT THE WRITTEN PERMISSION OF ROMTEC, INC.

PROJECT: 2082 SIERRA IV MULTI-USER RESTROOM

RADNOR TOWNSHIP  
FENIMORE WOODS RESTROOM  
WAYNE, PENNSYLVANIA

SHEET TITLE: ELEVATIONS

PROJECT#: 710

MODEL#: 2082

DATE: 10/18/2017

REVISIONS

REV	DATE	BY
3	4/6/18	TH
4	5/2/19	TH

DRAWN BY: TH

SHEET NO.





# Proposed Playground



- New Dry Stream
- New Accessible Path w/bridge
- New Pavilion with Restrooms
- New Playground (2-12 Combined)
- New Parking W/ Drop Off (20 Spaces)
- Existing Bridge
- New Accessible Path to Pond

- Existing Parking Setback (20')
- New Stone Parking Lot (24 Spaces)
- Existing Tree (Typ.)
- New Trash Enclosure W/Dumpster
- New Canopy Tree (Typ.)
- New Understory Tree (Typ.)
- New Stone Path w/Retaining Wall
- Existing Wetland Setback (30')
- Gulph Creek



Fenimore Woods Park  
Radnor Township, Pa



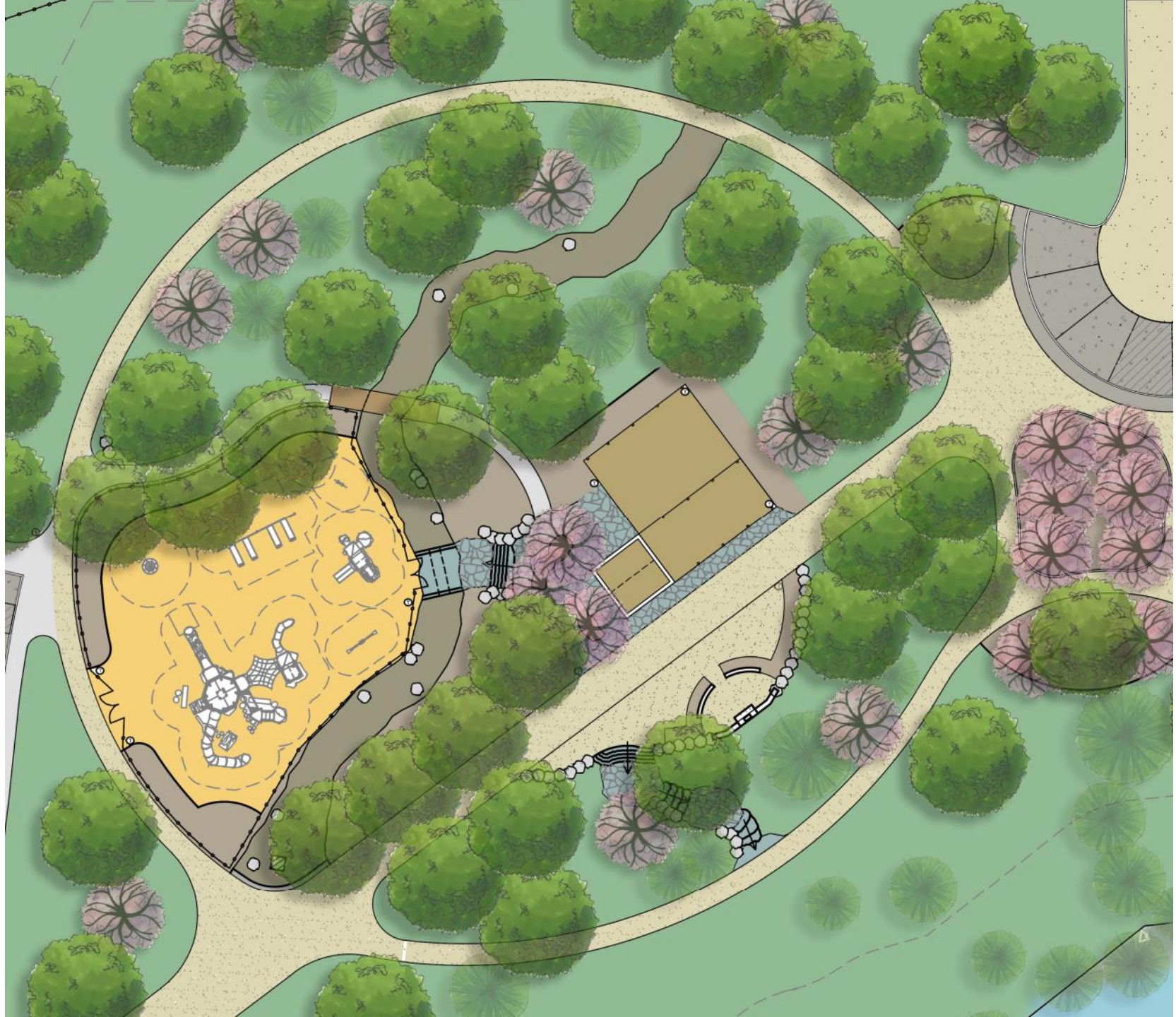




# Drainage Concept Plan

- Swales
- Vegetated Swales
- Rain Gardens
- Underground Stormwater Storage/Controlled Release













- New Dry Stream
- New Accessible Path w/bridge
- New Pavilion with Restrooms
- New Playground (2-12 Combined)
- New Parking W/ Drop Off (20 Spaces)

Existing Bridge

New Accessible Path to Pond



Eagle Road

Paul Road

Chamounix Road

- Existing Parking Setback (20')
- New Stone Parking Lot (24 Spaces)
- Existing Tree (Typ.)
- New Trash Enclosure W/Dumpster
- New Canopy Tree (Typ.)
- New Understory Tree (Typ.)
- New Stone Path w/Retaining Wall
- Existing Wetland Setback (30')
- Gulph Creek

New Stone Path

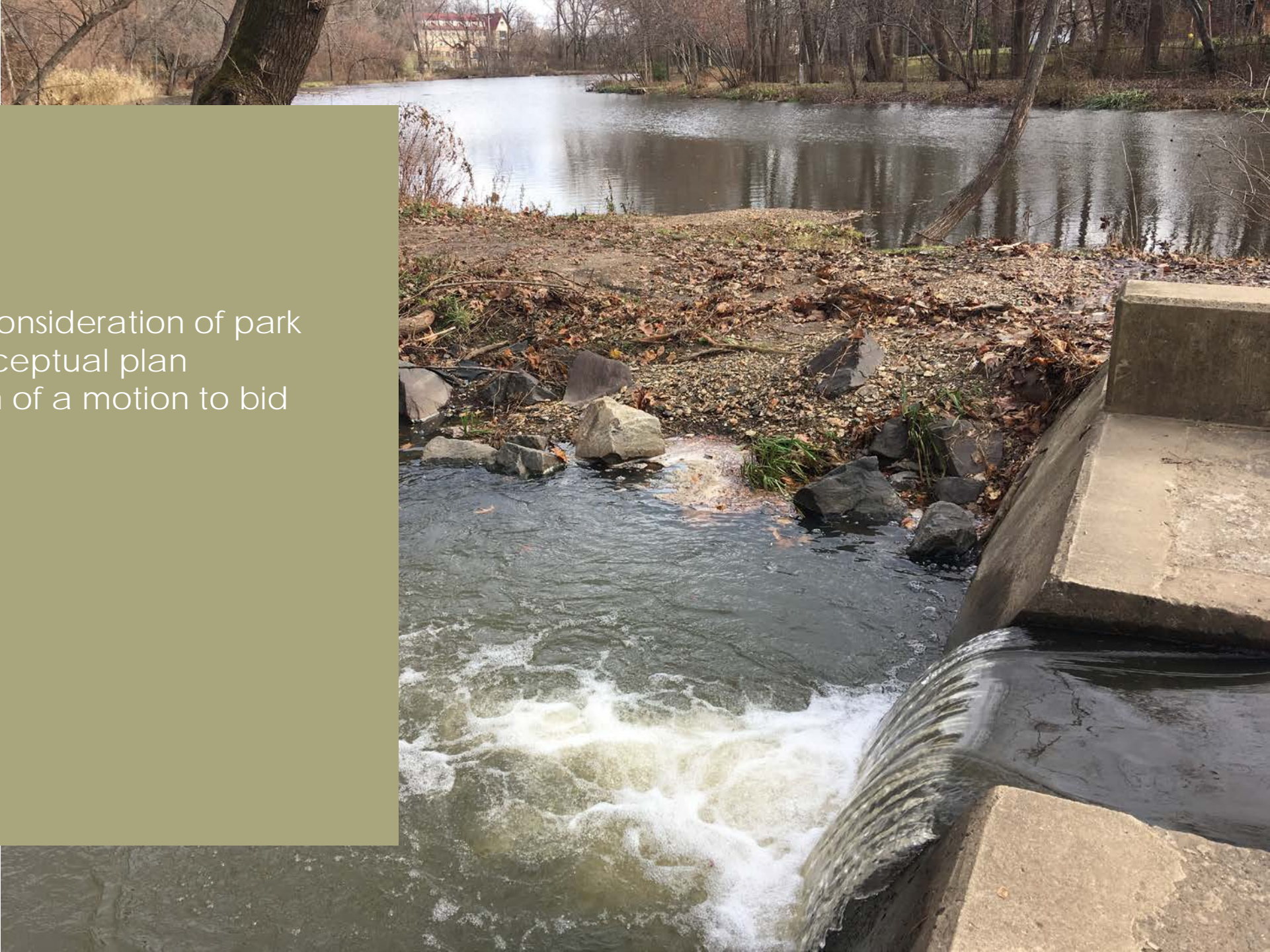
Fenimore Woods Park  
Radnor Township, Pa





## Next Steps:

- BOC review and consideration of park improvement conceptual plan
- BOC consideration of a motion to bid project





# Thank you



GILMORE & ASSOCIATES, INC.  
ENGINEERING & CONSULTING SERVICES

