

Radnor Township Darby Paoli Multi-Use Trail and Amenities

Board of Commissioners Meeting
July 16, 2018

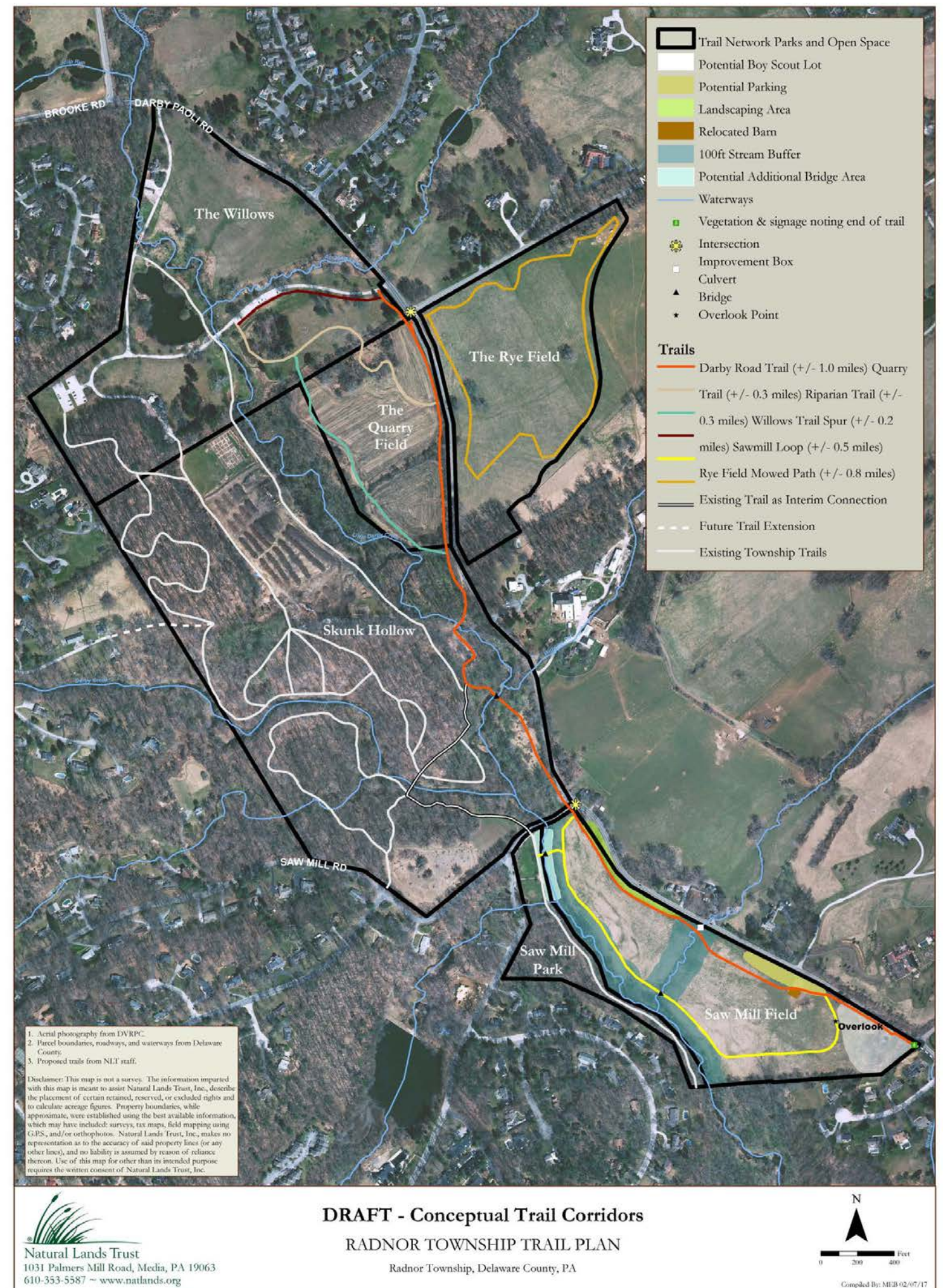
Darby Paoli Trail

Connecting:

The Willows
 Skunk Hollow
 Saw Mill Parks
 Former Ardrossan Estate

- Approximately 1 mile paved trail
- Several miles “soft” trails
- Two bridges and several culvert crossings
- Coordinated with Skunk Hollow Sewer Main replacement
- PennDOT
- Small Parking lot(s)

Meliora and McMahon Associates



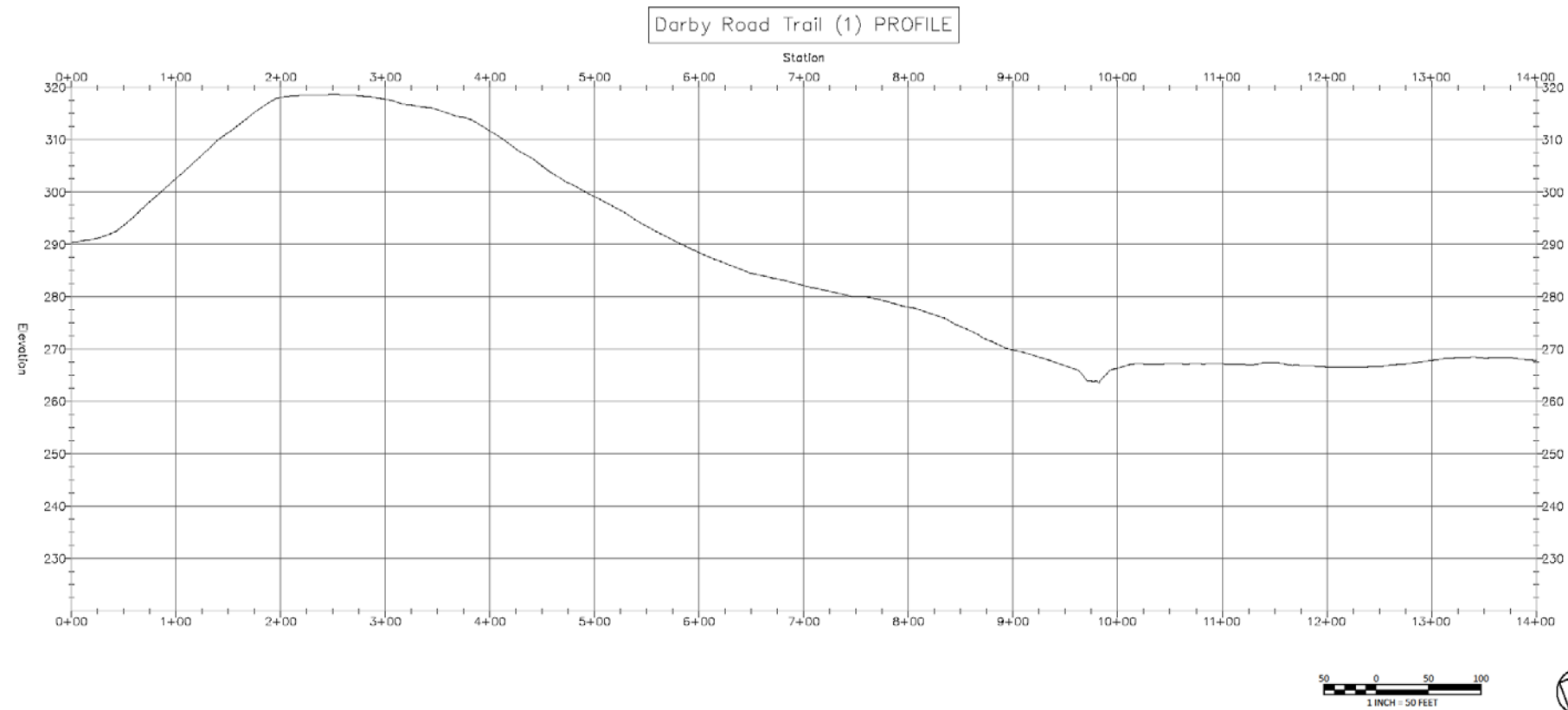
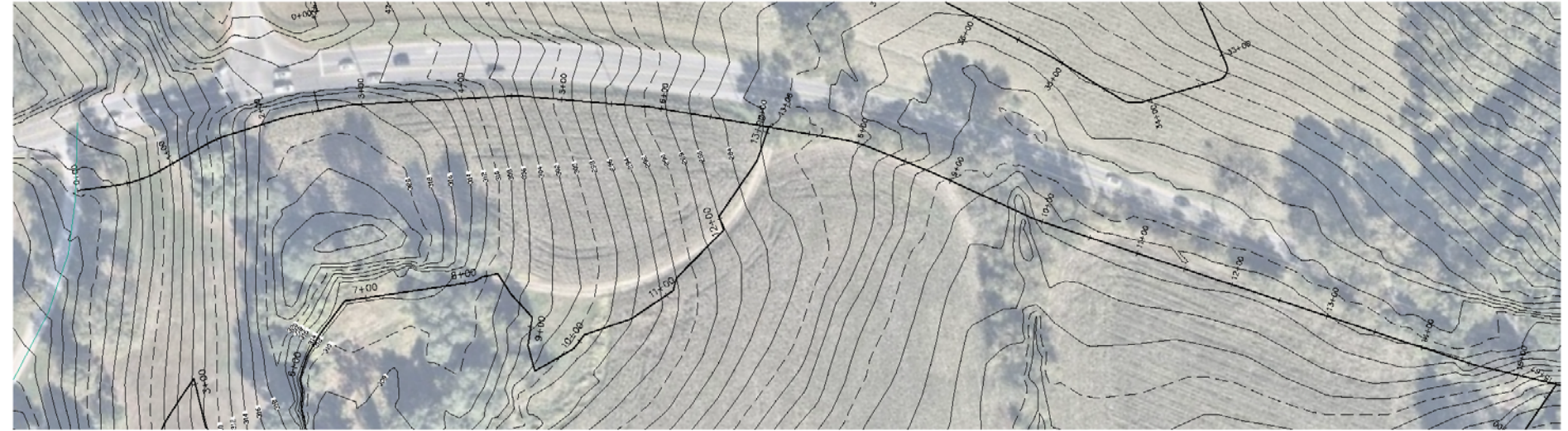
Darby Paoli Trail Timeline and Tasks

Completed

- Topographic Survey
- Wetlands Delineation
- Preliminary Layout
- Initial Design
- ADA considerations

Next Steps

- Resident meetings and Open Walk
- Shade Tree, Park & Rec, Radnor Conservancy
- Design Decisions



| | |
|---|--------------|
| REVISIONS: | |
| DATE: | ISSUE: |
| | |
| | |
| | |
| | |
| OWNER: | |
| | |
| CIVIL ENGINEERING CONSULTANT: | |
| | |
| MELIORA DESIGN 257 MORGAN STREET PHILADELPHIA, PA 19106 810.932.0122 WWW.MELIORADDESIGN.COM | |
| LANDSCAPE ARCHITECT: | |
| NATURAL LANDS 1031 Roman Mill Road Ardmore, PA 19003 | |
| TRAFFIC CONSULTANT: | |
| MCMAHON ASSOCIATES 840 Springdale Drive Exton, PA 19341 | |
| PROJECT TITLE: | |
| DARBY-PAOLI TRAIL PROJECT | |
| SCALE: | |
| | |
| SUBMISSION: | |
| SCHEMATIC DESIGN | |
| DRAWING TITLE: | |
| DARBY-PAOLI - Sheet 1 | |
| DATE: | DRAWING NO.: |
| ### | |
| SCALE: | |
| AS NOTED | |
| DRAWN BY: | |
| JDR | |
| CHECKED BY: | |
| MBH | |

Darby Paoli Trail Budget

Design Budget: \$498,500

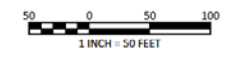
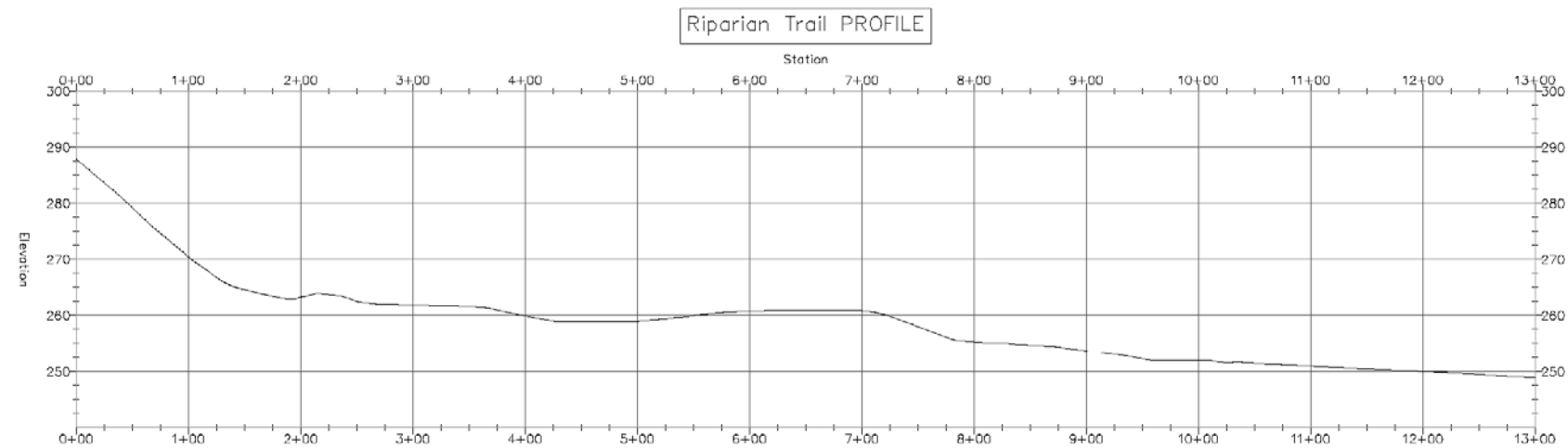
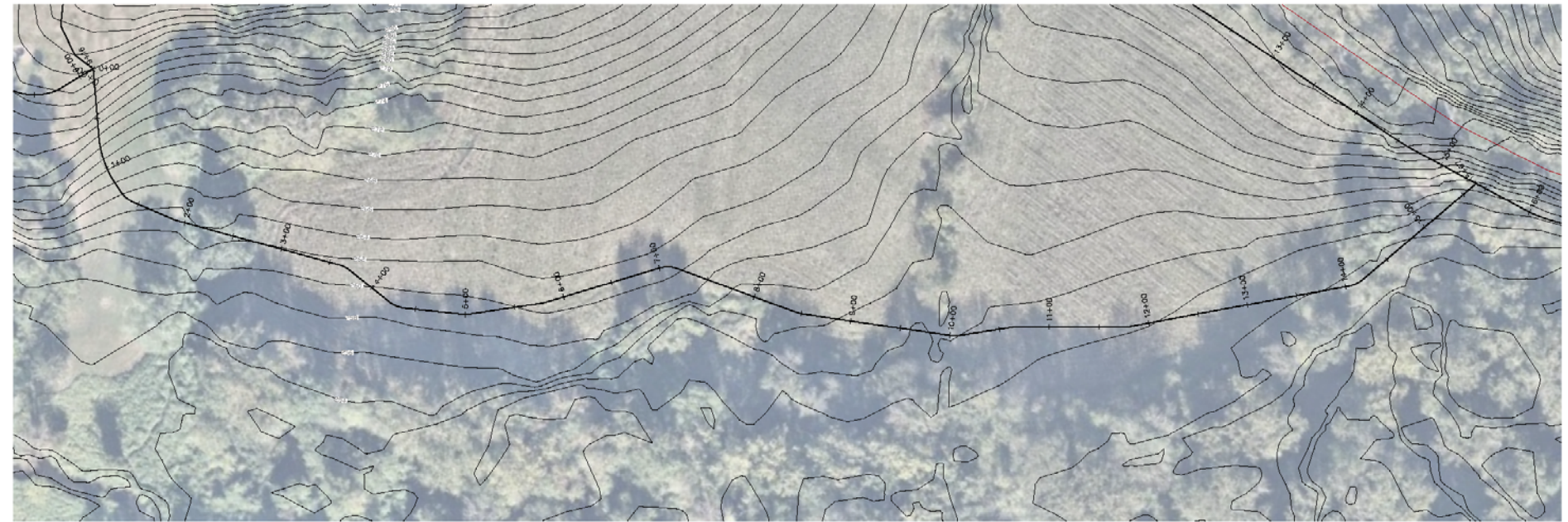
24%

Construction Estimate:

Not developed

Complete Design to seek 2019 Funding

- PennDOT Multimodal Transportation Fund (MTF)
- CFA/DCED Multimodal Transportation Fund (MTF)
- Community Conservation Partnerships Program (C2P2)
- Greenways, Trails and Recreation Program (GTRP)



| | |
|---|--------|
| REVISIONS: | |
| DATE: | ISSUE: |
| | |
| | |
| | |
| | |
| OWNER: | |
| | |
| CIVIL ENGINEERING CONSULTANT: | |
| | |
| MELIORA DESIGN 288 MORICAW STREET PHOENIXVILLE, PA 19380 610.933.0123 WWW.MELIORADESIGN.COM | |
| LANDSCAPE ARCHITECT: | |
| NATURAL LANDS 1031 ROMAN ROAD MERIDEN, PA 17848 | |
| TRAFFIC CONSULTANT: | |
| MCMANHOE ASSOCIATES 840 SPRINGDALE DRIVE EXTON, PA 19341 | |
| PROJECT TITLE: | |
| DARBY-PAOLI TRAIL PROJECT | |
| SCALE: | |
| AS NOTED | |
| DRAWN BY: JCR | |
| CHECKED BY: MBH | |
| SUBMISSION: | |
| SCHEMATIC DESIGN | |
| DRAWING TITLE: | |
| RIPARIAN Sheet - 1 | |