

Fenimore Woods Park

A Conceptual Draft Master Plan - Revised

Radnor Township

March 14, 2019

GILMORE & ASSOCIATES, INC.
ENGINEERING & CONSULTING SERVICES
BUILDING ON A FOUNDATION OF EXCELLENCE





GILMORE & ASSOCIATES, INC.
ENGINEERING & CONSULTING SERVICES
BUILDING ON A FOUNDATION OF EXCELLENCE

- Kevin Selger – Director of Landscape Architecture and Planning, Registered Landscape Architect



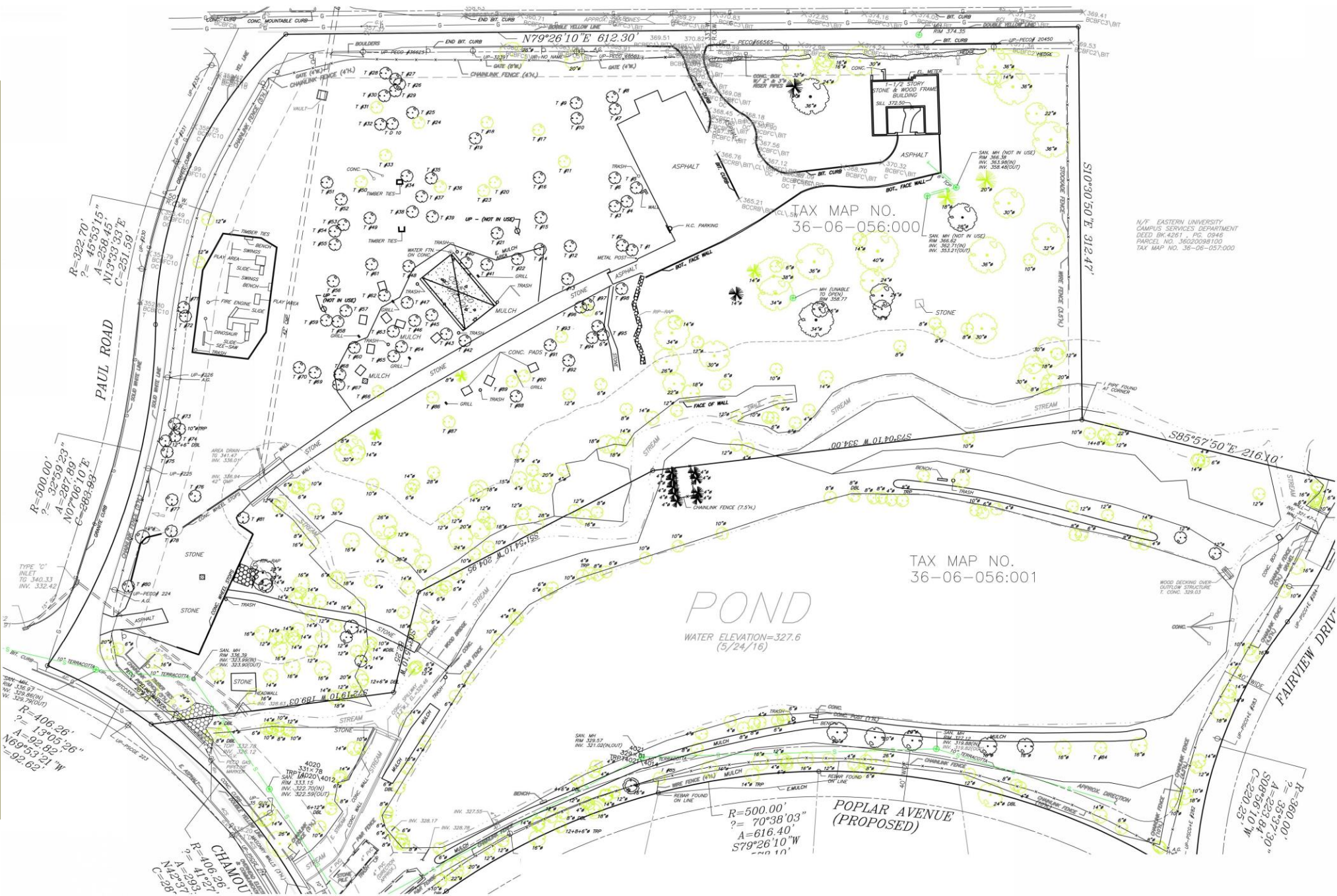
Site Context Map

Fenimore Woods Inventory:

- Approximately 11.5 Acres
- Contains a 2.2 Acre Pond
- Gulph Creek runs directly through the site
 - Contains both 100 and 500 Year Floodplains and designed floodway
- Neighbors Eastern and Cabrini Universities , as well as 4 Residential Homes



Existing Conditions Plan



Existing Programming:

- Playground
- Pavilion with picnic tables
- Parking
- Walking Trail around pond
- BBQ grills
- Portable bathrooms



Site Constraints:

- Sensitivity to neighbors
- ADA Accessibility (Excessive Grade Change)
- Aging Infrastructure
- Flooding/Stormwater Management
- Pond health
- Adequate parking and site access
- Maintaining the “Fenimore” feel



Proposed Programming:

- 2 Reconfigured parking lots
- New ADA access and parking
- New pavilion structure with seating and adjacent bathroom
- New stone walking trail around pond
- New stone walking trail loop around entire upper area of the park
- New fireplace with seating/cooking area
- Dry stream with new bridge
- New bridge for pond area
- New combined playground with 2-5 and 5-12 areas



Previous Site Plan



What is a Dry Stream?

A dry stream is a stream bed that can be used for drainage purposes. The bed remains dry almost all the time, except during heavy rain events. During these heavy rain events, the stream acts as a vehicle to carry stormwater, avoid erosion and clean stormwater.



Pavilion Examples



Changes from Last Plan:

- Combined separate playgrounds into one
- Relocated dry creek bed around playground
- Shifted bathroom/pavilion uphill closer to upper parking lot
- Added gate from Paul Road

Current/Revised Site Plan



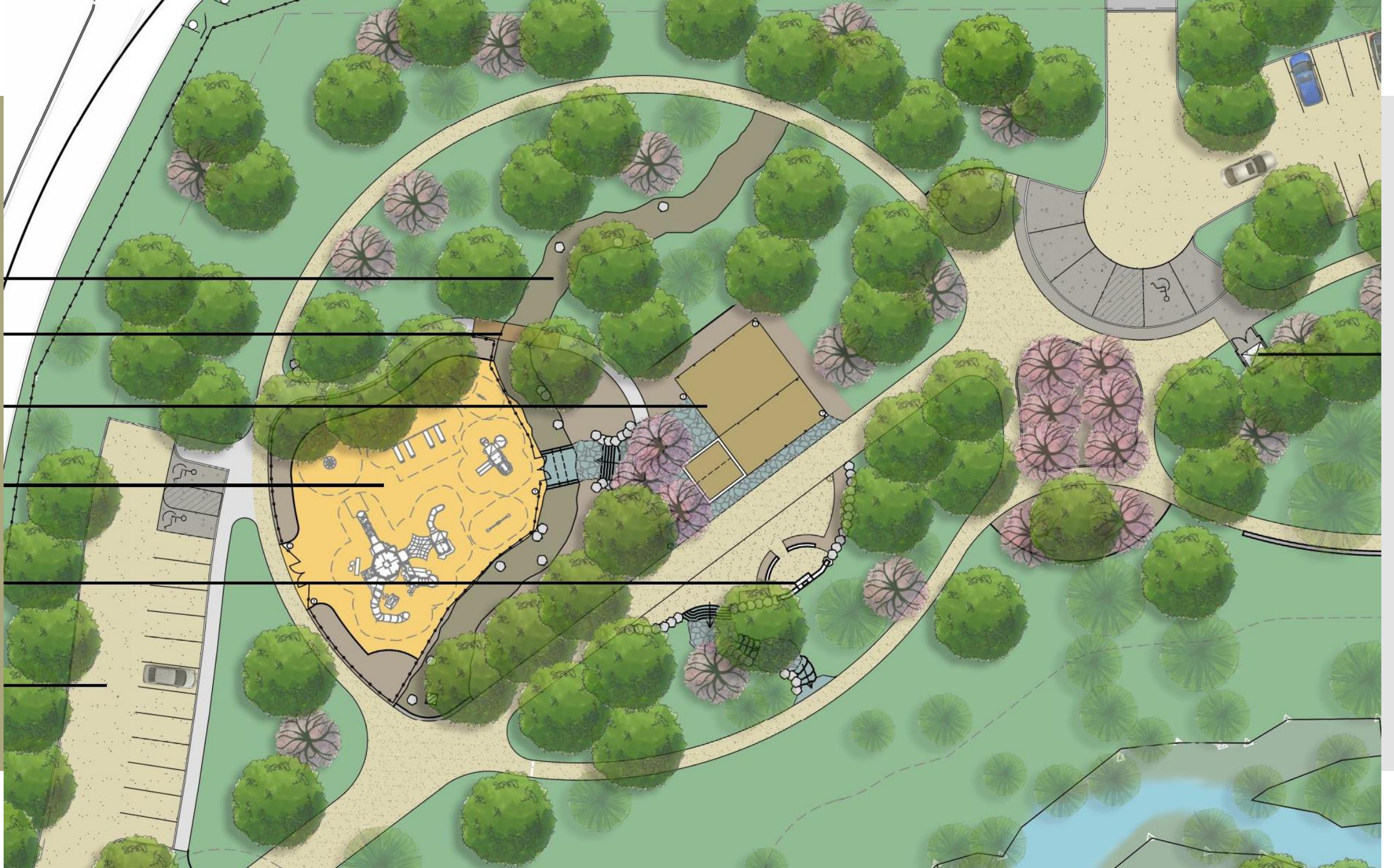
Fenimore Woods Park
Radnor Township, Pa



Drainage Concept Plan



- Swales
- Vegetated Swales
- Rain Gardens
- Underground Stormwater Storage/Controlled Release







Proposed Playground Equipment (5-12 Area)



Proposed Playground Equipment (2-5 Area)



- New Dry Stream
- New Accessible Path w/bridge
- New Pavilion with Restrooms
- New Playground (2-12 Combined)
- New Fire Place
- New Parking W/ Drop Off (20 Spaces)

- Existing Parking Setback (20')
- New Stone Parking Lot (24 Spaces)
- Existing Tree (Typ.)
- New Trash Enclosure W/Dumpster
- New Canopy Tree (Typ.)
- New Understory Tree (Typ.)
- New Stone Path w/Retaining Wall
- Existing Wetland Setback (30')
- Gulph Creek

Existing Bridge

New Accessible Path to Pond



Fenimore Woods Park
Radnor Township, Pa

Thank you



GILMORE & ASSOCIATES, INC.
ENGINEERING & CONSULTING SERVICES

