

Radnor Township Harford Trail

Board of Commissioners Meeting
July 16, 2018

Harford Trail

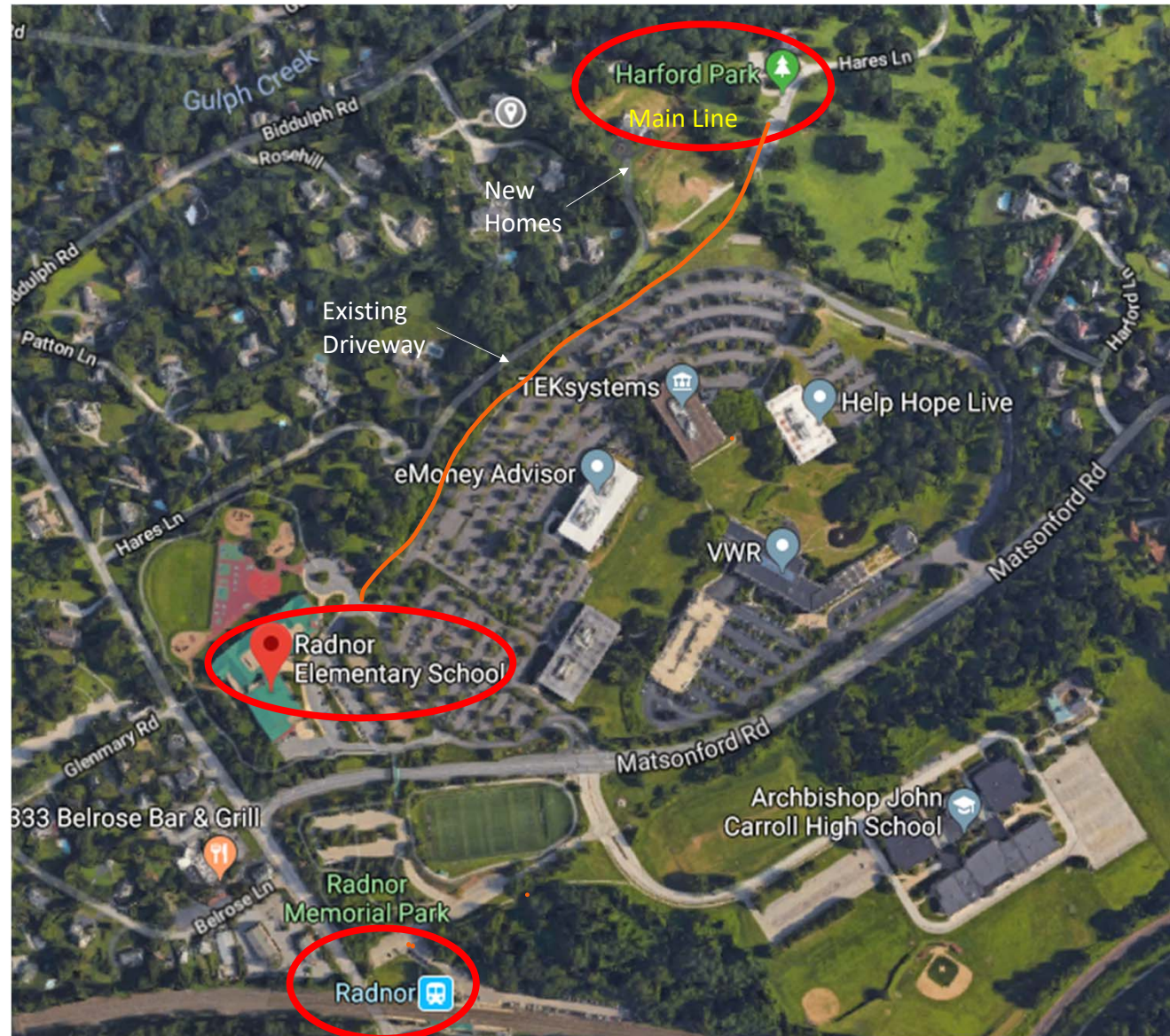
Connecting:

Radnor Train Station and
Radnor Elementary School

to

Harford Park &
Main Line School Night Association

- Existing Driveway
- Two new homes
- New trail along Radnor Center Associates commercial parcel
- +/-1,400 feet mulched trail (wood chip)

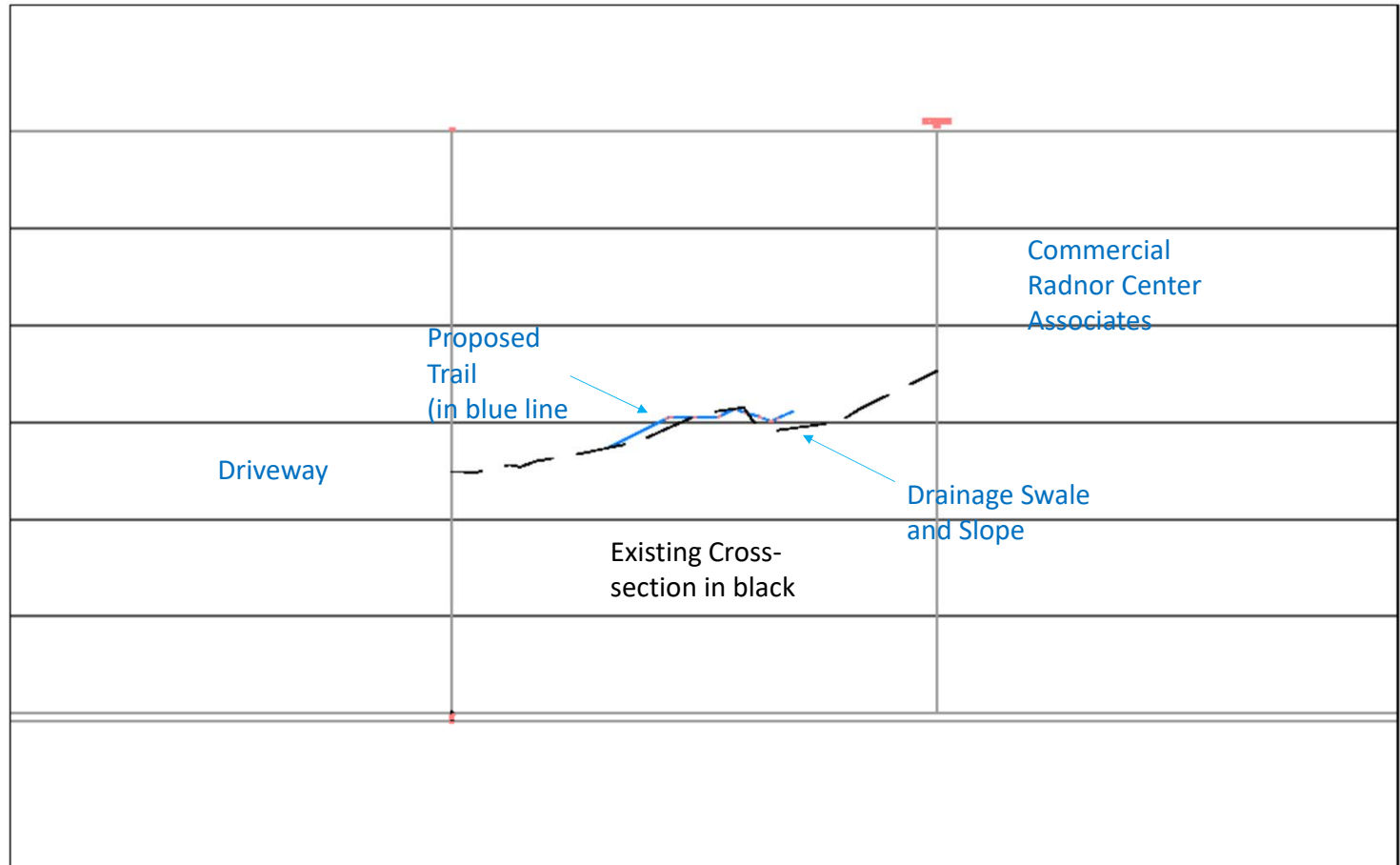


Harford Trail Site Constraints

- Limited Space
- Topography
- Existing Drainage Swale
- Trees

Balance amount of grading against tree removal / impact.

New trail to include tree planting



Harford Trail Budget

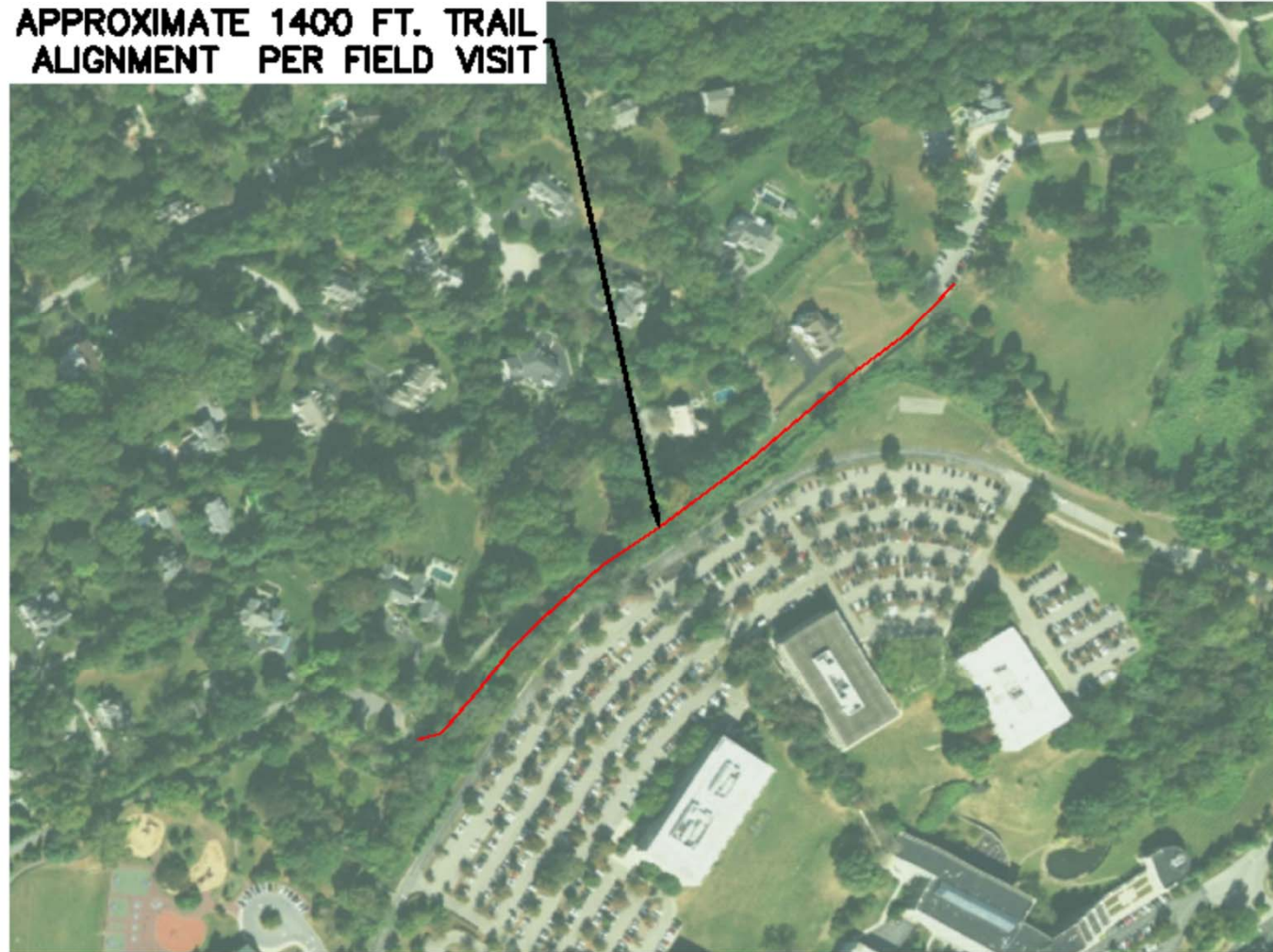
Design Budget: \$21.220

17% spent

Construction Estimate:

Not developed yet

**APPROXIMATE 1400 FT. TRAIL
ALIGNMENT PER FIELD VISIT**



SCALE 1" = 250'-

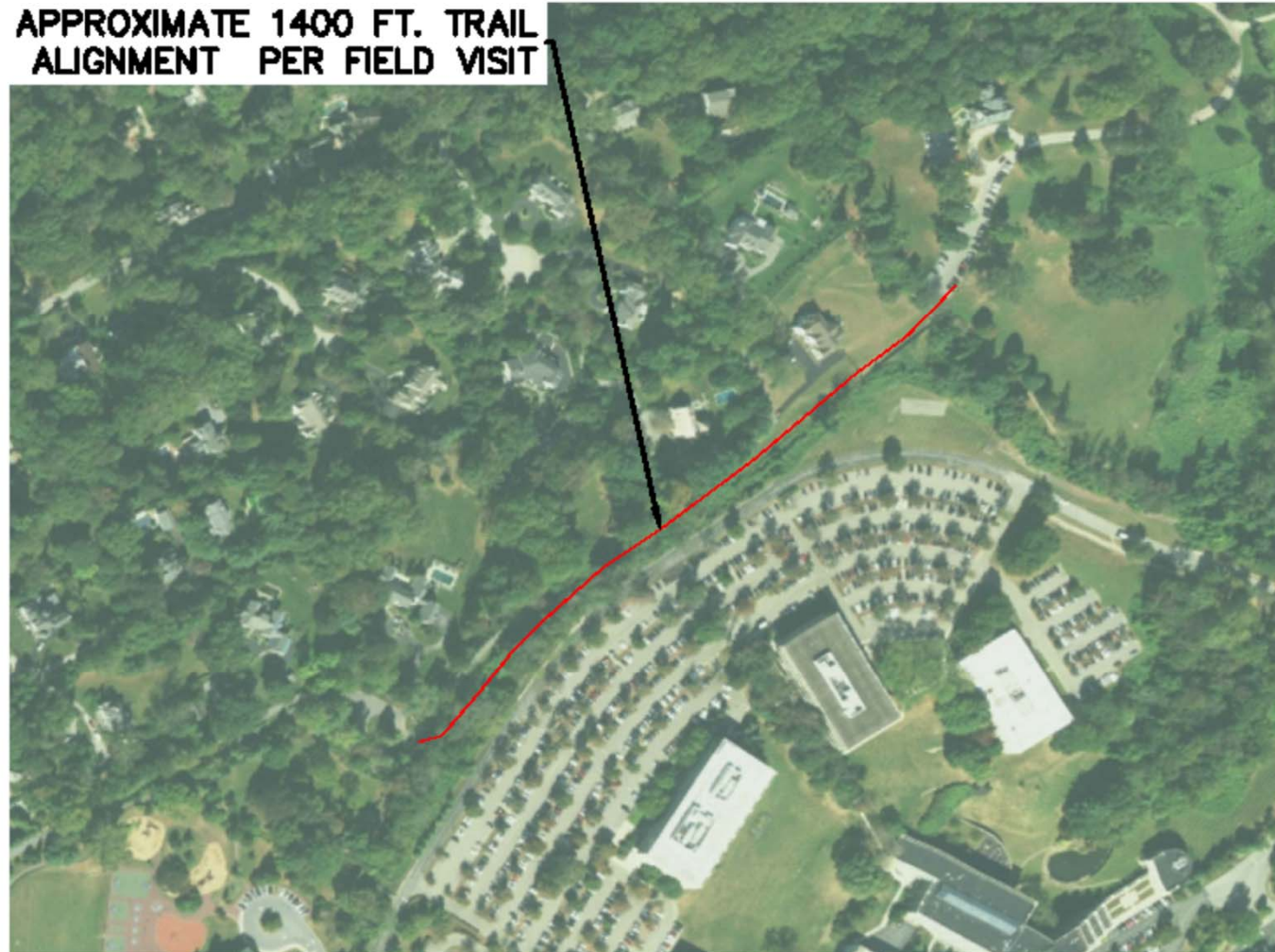
Harford Trail Timeline and Tasks

Completed – June 2018

- Site Meeting
- Topographic Survey
- Analysis of grading, drainage, and constructability
- Initial Design

Next Steps

- Arborist Review of Trees
- Property Owner Meetings
- Design Documentation
- Township approval
- Bid and construction



SCALE 1" = 250'