

LANCASTER AVENUE

(A.K.A. U.S. ROUTE 30)
(A.K.A. LANCASTER PIKE)
(A.K.A. S.R. 0030)
(A.K.A. T.R. 142)

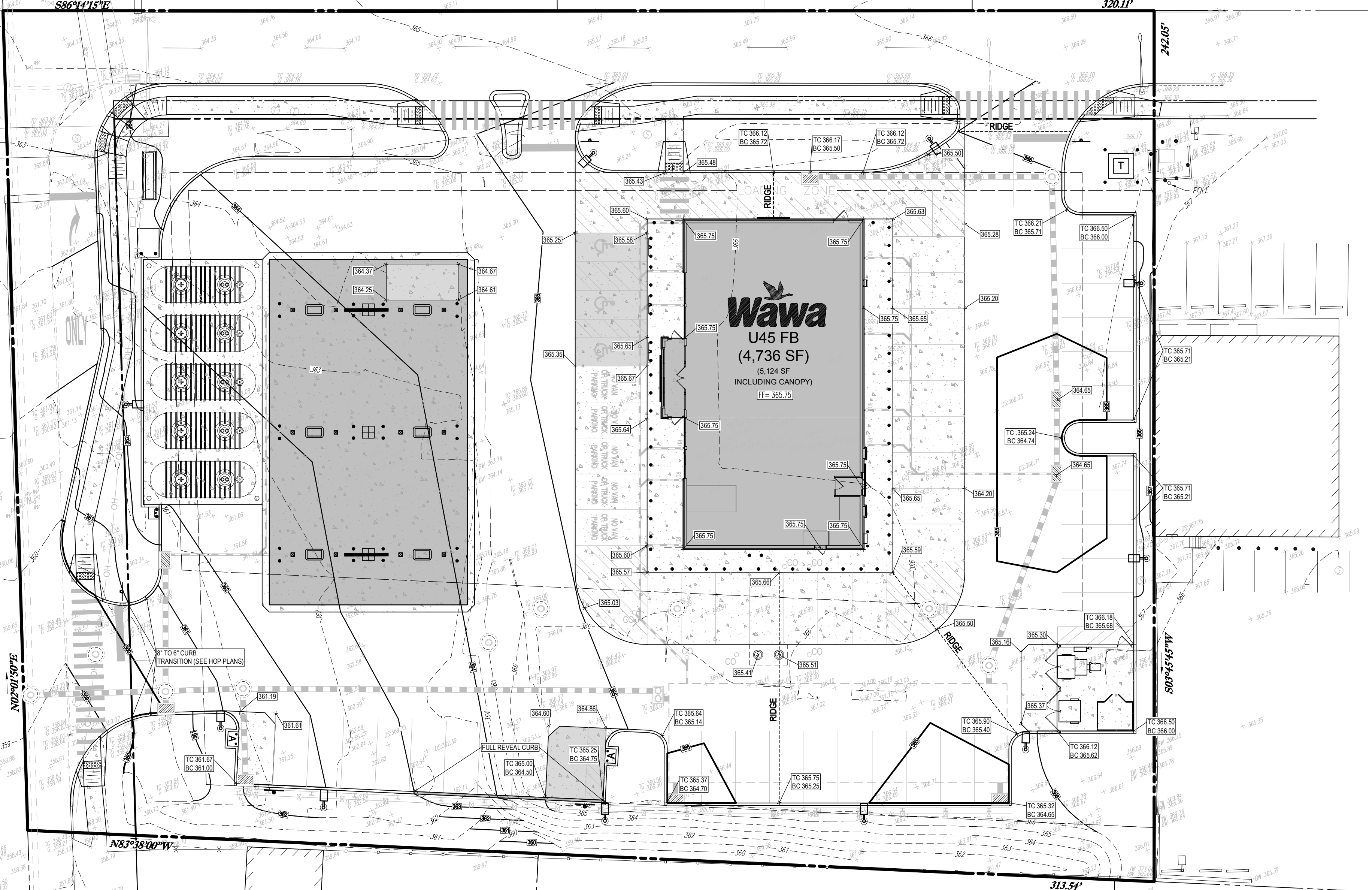
(60' WIDE R.O.W. PER P.B. 18, PG. 15)
(50' WIDE R.O.W. PER REF. MAP #5)
TWO WAY
70477TC
(ASPHALT ROADWAY)

SEE PENNDOT APPROVED HIGHWAY OCCUPANCY PERMIT
PLANS PREPARED BY TRAFFIC PLANNING & DESIGN FOR
WORK WITH IN THE STATE R.O.W. IMPROVEMENTS SHOWN
HERE FOR COORDINATION PURPOSES ONLY

ABERDEEN AVENUE

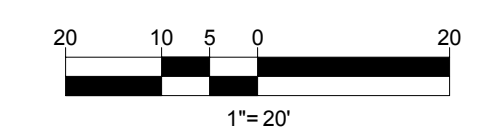
(A.K.A. SOUTH ABERDEEN AVENUE)
(60' WIDE R.O.W.)
7543TC
(ASPHALT ROADWAY)

SEE PENNDOT APPROVED HIGHWAY OCCUPANCY PERMIT
PLANS PREPARED BY TRAFFIC PLANNING & DESIGN FOR
WORK WITH IN THE STATE R.O.W. IMPROVEMENTS SHOWN
HERE FOR COORDINATION PURPOSES ONLY



DRAWING LEGEND

- PROPERTY LINE
- EXISTING CONTOUR INDEX
- EXISTING CONTOUR INTERVAL
- EXISTING SPOT ELEVATION
- EXISTING STORMWATER
- PROPOSED CONTOUR INDEX
- PROPOSED CONTOUR INTERVAL
- PROPOSED RIDGE LINE
- PROPOSED SPOT ELEVATION
- PROPOSED TOP / BOTTOM CURB ELEVATION
- PROPOSED STORMWATER PIPE



BOHLER ENGINEERING

ENGINEERING

SITE CIVIL AND CONSULTING ENGINEERING
LAND SURVEYING PROGRAM MANAGEMENT LANDSCAPE ARCHITECTURE
SUSTAINABLE DESIGN PERMITTING SERVICES TRANSPORTATION SERVICES
TRAFFIC ENGINEERING

- ALABAMA
- ARIZONA
- CALIFORNIA
- COLORADO
- FLORIDA
- GEORGIA
- ILLINOIS
- INDIANA
- IOWA
- KANSAS
- MICHIGAN
- MINNESOTA
- MISSISSIPPI
- MISSOURI
- MONTANA
- NEBRASKA
- NEVADA
- NEW JERSEY
- NEW YORK
- NORTH CAROLINA
- NORTH DAKOTA
- OHIO
- OKLAHOMA
- PENNSYLVANIA
- SOUTH CAROLINA
- TEXAS
- VIRGINIA
- WISCONSIN
- WYOMING

1800 MANOR DRIVE, SUITE 200
CHALFONT, PENNSYLVANIA 18914
PHONE: (215) 996-9100
FAX: (215) 996-9102
WWW.BOHLERENGINEERING.COM

REVISIONS

REV	DATE	COMMENT	BY
1	08/31/2018	PER DOT COMMENTS	MCM

CALL BEFORE YOU DIG!

PENNSYLVANIA LAW REQUIRES
3 WORKING DAYS NOTICE FOR
CONSTRUCTION PHASE AND 10
WORKING DAYS IN DESIGN
STAGE - STOP CALL

PA1 POCS SERIAL NUMBER
1-800-242-1776

**NOT APPROVED FOR
CONSTRUCTION**

PROJECT No.: PC181016
DRAWN BY: MCM
CHECKED BY: EAB
DATE: 2018.07.13
SCALE: AS NOTED
CAD I.D.: PC181016 SITE-1

**PRELIMINARY
LAND DEVELOPMENT
PLANS**

FOR
**WAYNE PROPERTY
ACQUISITION INC.**

ROUTE 30 (LANCASTER AVE)
& ABERDEEN AVE
RADNOR TOWNSHIP
DELAWARE COUNTY, PA

BOHLER ENGINEERING

1600 MANOR DRIVE, SUITE 200
CHALFONT, PENNSYLVANIA 18914
Phone: (215) 996-9100
Fax: (215) 996-9102
www.BohlerEngineering.com

SHEET TITLE:
GRADING PLAN

SHEET NUMBER:
5
OF 19

REVISION 1 - 2018.08.31

PL181016-DRAWINGS-PLAN SETS-LAND DEV-REV-PC181016 SITE-1-LAYOUT-06-GRADING