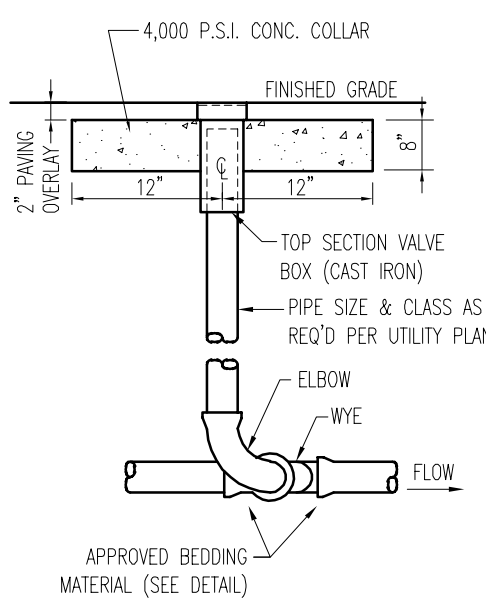
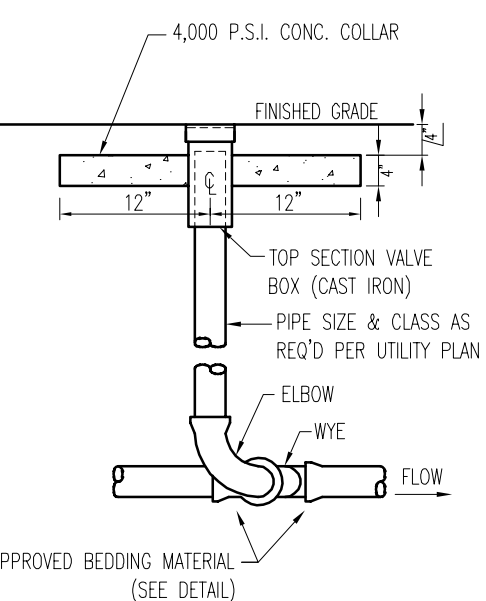


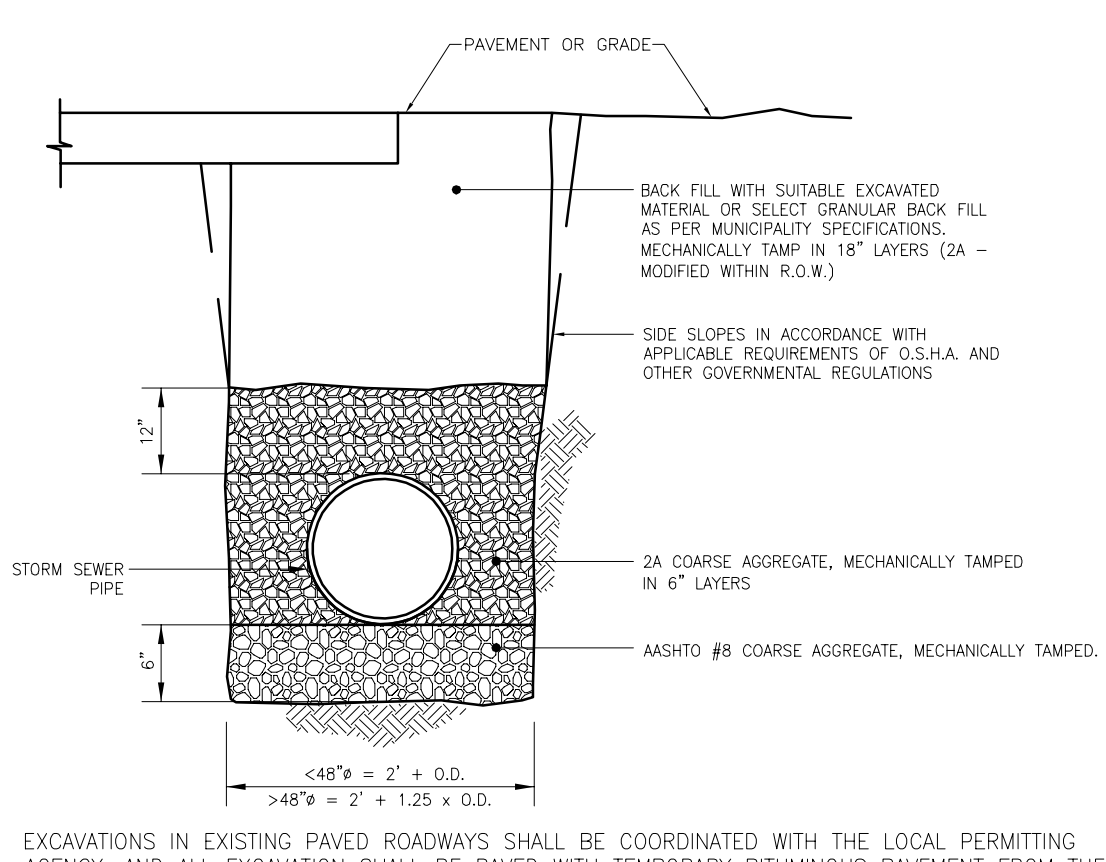
S1 TYPICAL SANITARY SEWER LATERAL DETAIL
SCALE: N.T.S. REV: 2015.03.09



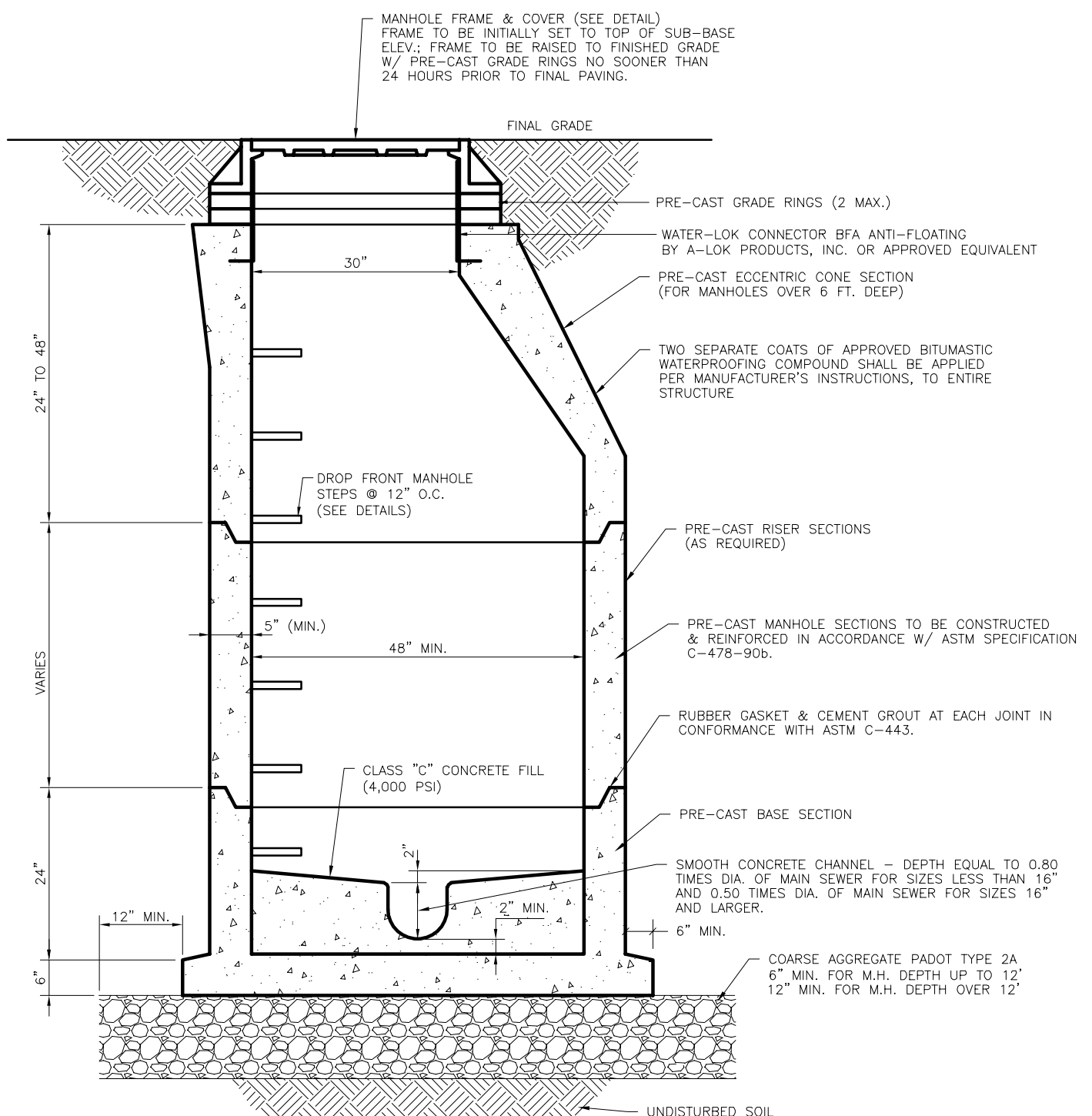
S12 TYPICAL CLEANOUT DETAIL (PAVED AREAS)
SCALE: N.T.S. REV: 2015.03.09



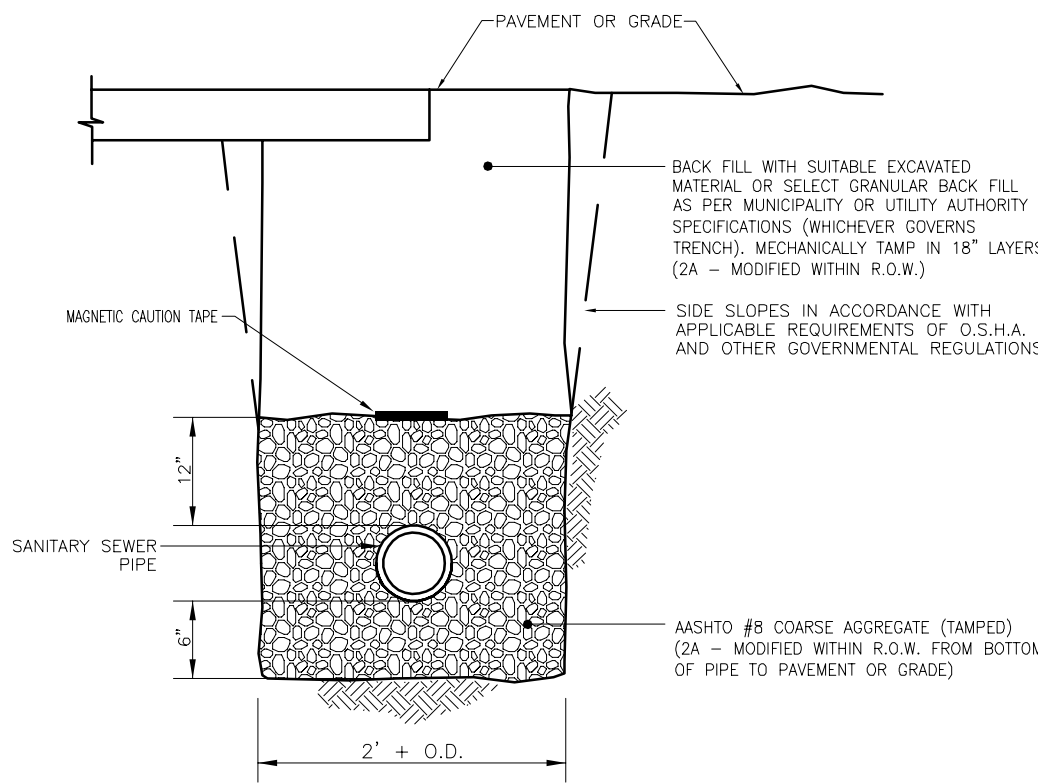
S13 TYPICAL CLEANOUT DETAIL (LANDSCAPED AREAS)
SCALE: N.T.S. REV: 2015.03.09



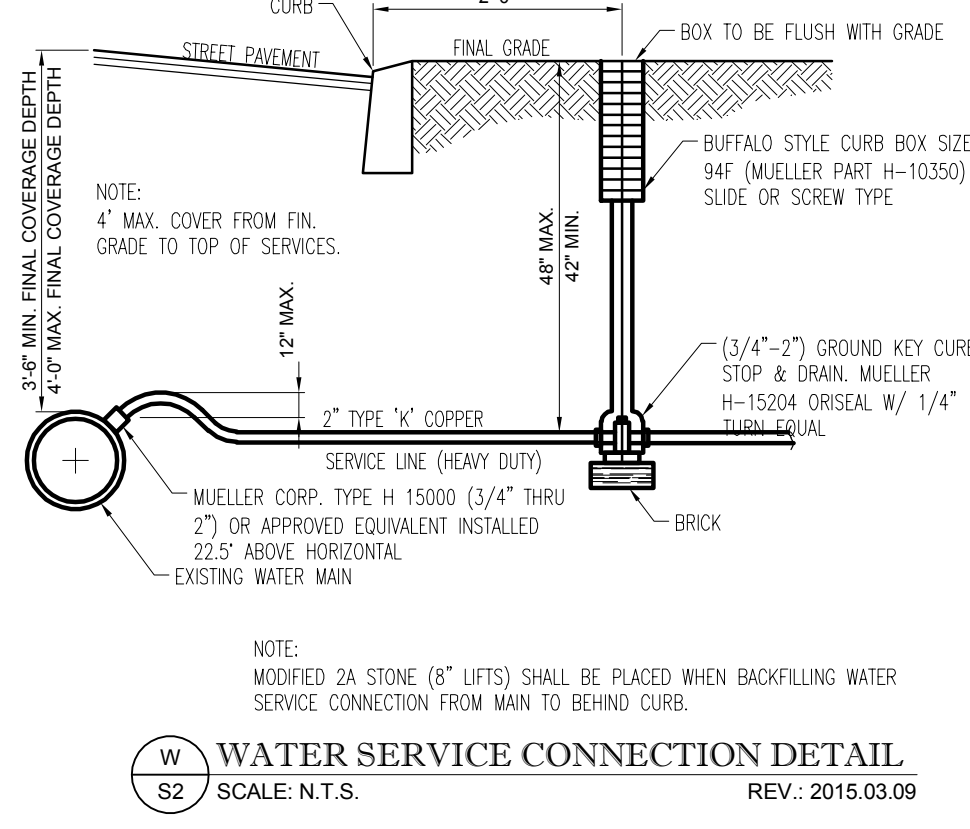
R TRENCH BEDDING CLASSIFICATION (STORM)
S8 SCALE: N.T.S. REV: 2015.03.09



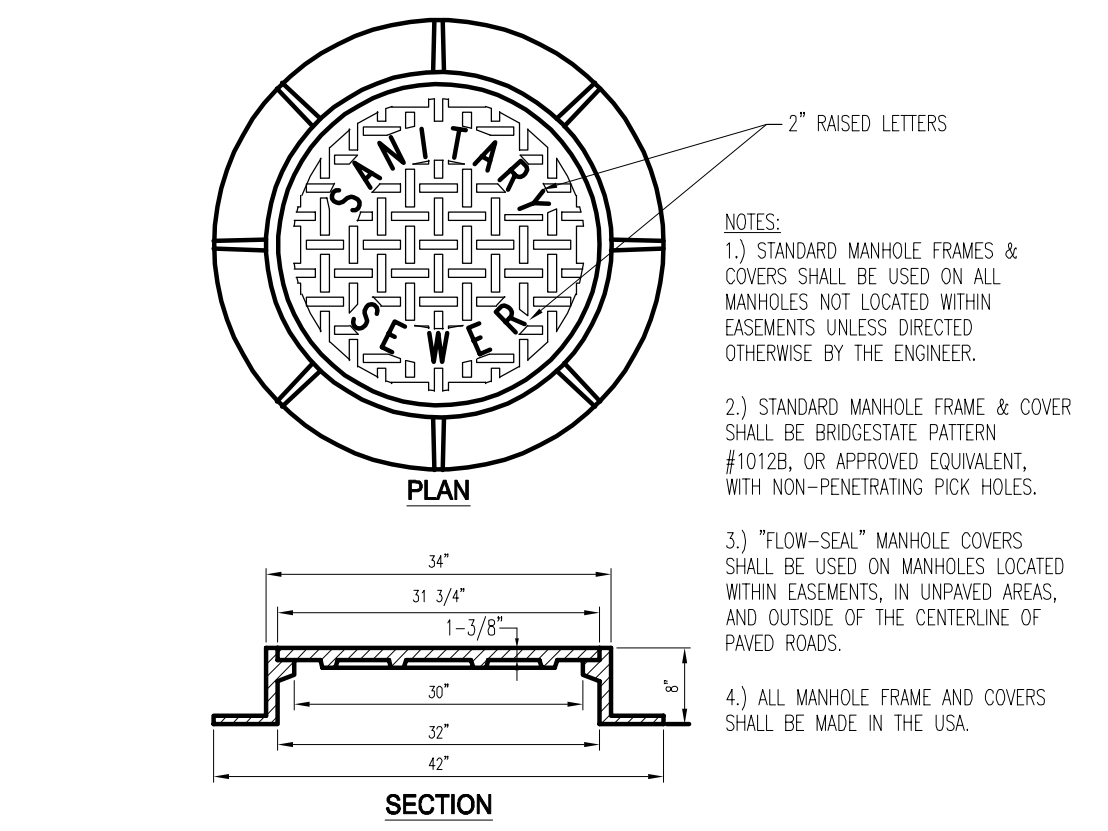
S3 PRECAST SANITARY MANHOLE DETAILS
SCALE: N.T.S. REV: 2015.03.09



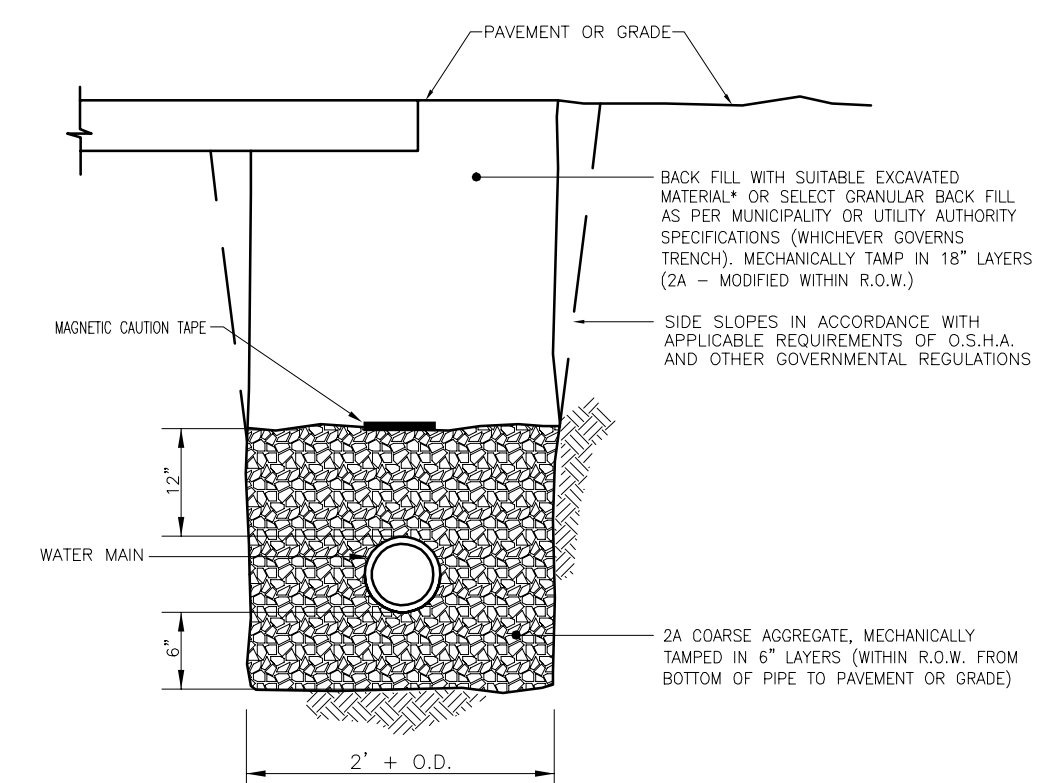
S TRENCH BEDDING CLASSIFICATION (SANITARY MAIN)
S8 SCALE: N.T.S. REV: 2015.03.09



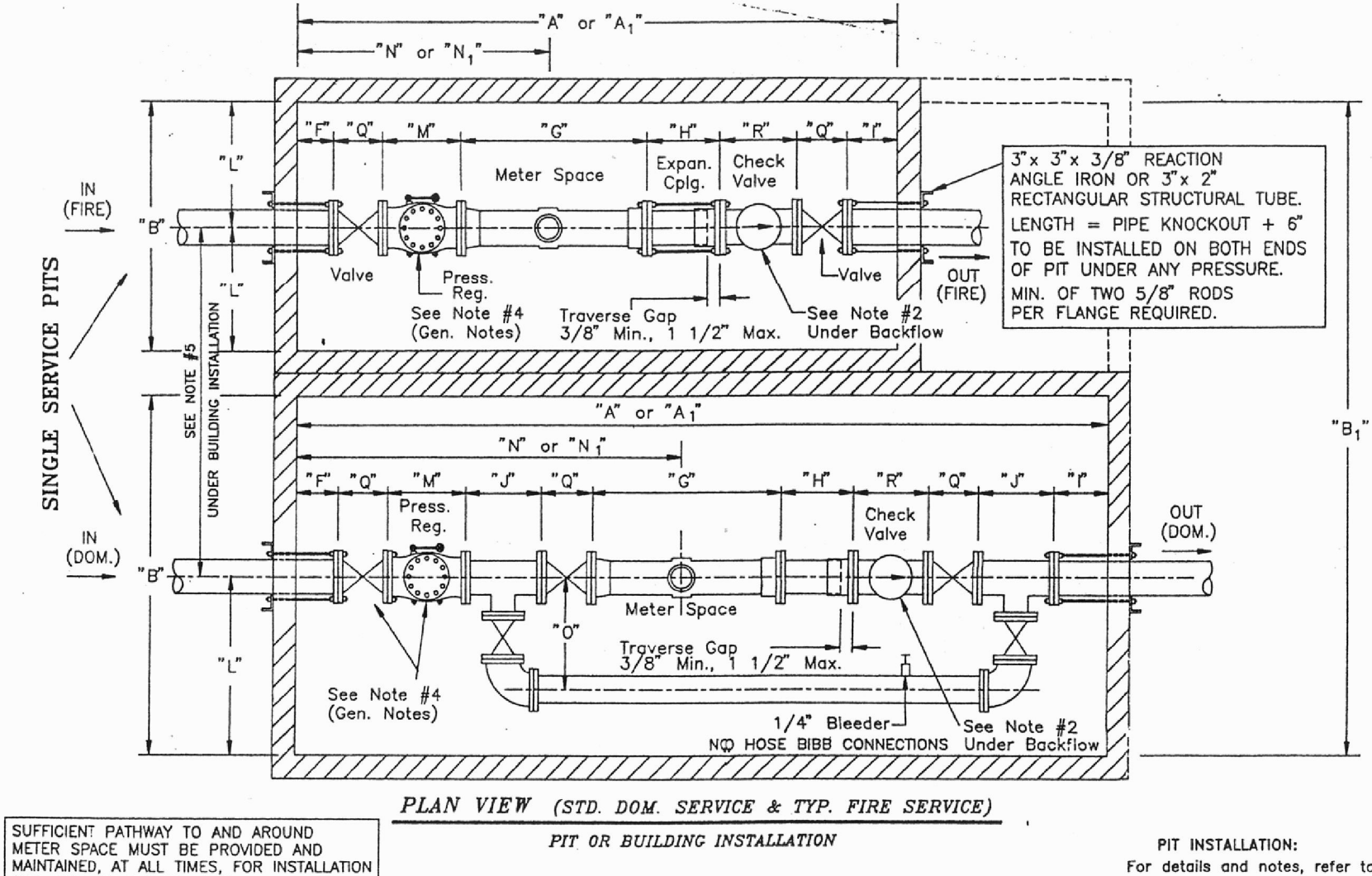
W WATER SERVICE CONNECTION DETAIL
S2 SCALE: N.T.S. REV: 2015.03.09



S MANHOLE FRAME DETAIL
SCALE: N.T.S. REV: 2015.03.09



W TRENCH BEDDING CLASSIFICATION (WATER MAIN)
S4 SCALE: N.T.S. REV: 2015.03.09



PLAN VIEW (STD. DOM. SERVICE & TYP. FIRE SERVICE)
PIT OR BUILDING INSTALLATION

SUFFICIENT PATHWAY TO AND AROUND METER SPACE MUST BE PROVIDED AND MAINTAINED, AT ALL TIMES, FOR INSTALLATION AND MAINTENANCE OF METER.

PIT INSTALLATION: For details and notes, refer to PSW Co. Plan C-5558.

DESCRIPTION	CODE	FIRE						DOMESTIC (STANDARD)					
		1 1/2"	2"	4"	6"	8"	10"	1 1/2"	2"	4"	6"	8"	
LENGTH (HIGH PRESSURE)	"A"	6'-0"	6'-0"	8'-0"	8'-0"	10'-0"	10'-0"	6'-0"	7'-0"	11'-0"	11'-0"	13'-0"	13'-0"
LENGTH (LOW PRESSURE)	"A1"	6'-0"	6'-0"	8'-0"	8'-0"	10'-0"	10'-0"	6'-0"	6'-0"	9'-0"	9'-0"	10'-0"	10'-0"
WIDTH	"B"	4'-0"	4'-0"	4'-0"	4'-0"	5'-0"	5'-0"	4'-0"	4'-0"	5'-0"	5'-0"	5'-0"	5'-0"
ACCESS DOOR	"C"	3' x 3'	3' x 3'	3' x 3'	3' x 3'	3' x 3'	4' x 4'	3' x 3'	3' x 3'	3' x 3'	3' x 3'	3' x 3'	3' x 3'
MAX. LENGTH OFF WALL (INLET)	"D"	6"	6"	6"	6"	6"	6"	6"	6"	6"	6"	6"	6"
LAYING LENGTH OF METER (SEE GENERAL NOTE #6)	"E"	1'-0"	1'-0"	1'-0"	1'-0"	1'-0"	1'-0"	1'-0"	1'-0"	1'-0"	1'-0"	1'-0"	1'-0"
EXPANSION COUPLING	"F"	6"	6"	6"	6"	6"	6"	6"	6"	6"	6"	6"	6"
MIN. LENGTH OFF WALL (OUTLET)	"G"	6"	6"	6"	6"	6"	6"	6"	6"	6"	6"	6"	6"
BY-PASS TEE	"H"	1'-0"	1'-0"	1'-0"	1'-0"	1'-0"	1'-0"	1'-0"	1'-0"	1'-0"	1'-0"	1'-0"	1'-0"
PIPE TO FLOOR	"I"	1'-0"	1'-0"	1'-0"	1'-0"	1'-0"	1'-0"	1'-0"	1'-0"	1'-0"	1'-0"	1'-0"	1'-0"
PIPE TO SIDE WALL	"J"	1'-0"	1'-0"	2'-0"	2'-0"	3'-0"	3'-0"	2'-0"	2'-0"	3'-0"	3'-0"	3'-0"	3'-0"
AVG. LAYING LENGTH OF PRESSURE REGULATOR	"K"	6 1/2'	7'	13'	18'	24 1/2'	2'-0"	6 1/2'	7'	12'	13'	18'	24 1/2'
METER TO FRONT WALL (HIGH PRESS.)	"L"	2'-0"	2'-0"	4'-0"	5'-0"	6'-0"	7'-0"	2'-0"	2'-0"	4'-0"	4'-0"	7'-0"	8'-0"
METER TO FRONT WALL (LOW PRESS.)	"L1"	2'-0"	2'-0"	3'-0"	3'-0"	4'-0"	5'-0"	2'-0"	2'-0"	4'-0"	4'-0"	5'-0"	5'-0"
AVG. LAYING LENGTH OF VALVE	"M"	4'	4'	9'	10 1/2'	11 1/2'	13'	4'	4'	9'	10 1/2'	11 1/2'	13'
AVG. LAYING LENGTH OF CHECK VALVE	"N"	6"	6"	13'	18 1/2'	19 1/2'	24 1/2'	6"	6"	13'	18 1/2'	19 1/2'	24 1/2'
PIPE TO BY-PASS	"O"	0'	0'	0'	0'	0'	0'	0'	0'	0'	0'	0'	0'

* SEE NOTE #6 UNDER GENERAL NOTES

GENERAL NOTES FOR ALL INSTALLATIONS:

- All meters and strainers to be supplied, maintained, owned and installed by PSW Co.
- For all domestic and fire service lines 3" and larger, a minimum of two 6" x 1608 adjustable pipe supports, or equal, shall be installed by owner. They shall be placed under the inlet & outlet flanges of the meter space, prior to the meter being set. Adfl supports may be needed.
- All meters must be set level in a horizontal plane.
- On fire service lines 2" and smaller, and domestic service lines, when pressure may exceed 100 psi, a pressure regulator and an outlet valve on the inlet side of the PRV are req'd. On fire service lines over 2", when pressure may exceed 150 psi, a pressure regulator is req'd. By-pass around regulator not allowed.
- On domestic service lines, 1 1/2" and larger, a by-pass is required. PSW Co. will determine the exceptions.
- Where domestic meter size is smaller than service size, the meter opening "G" dim. shall be the "G" dim. of the meter size plus the laying length of the reducers. Avg. laying length of reducers: 4" = (11), 6" = (9"), 4" x 2" (7").
- Expansion couplings are req'd for pit installations. On expansion pipe 3" and larger, a Smith Blair #912 adaptor w/9/16" tail pice or a Ford flanged coupling adaptor style FFCA w/flanged tail pice or equal, shall be used (tail piece must abut meter) on 2" and smaller, a Ford Lock-Flo cap, or equal, in req'd, except when using a "Special Custom Setter" or equal.
- For 1 1/2" and 2" meters (low pressure), a 36" dia. pit made of Rigid PVC Pipe (Ribbed Const.) may be used, along with a Ford "Special Custom Setter". See PSW Co. plan No. G-18119.
- Butterfly valves are NOT permitted in meter arrangements.
- Victaulic flanges and joints are NOT acceptable in the meter arrangement or in meter pits.

BUILDING INSTALLATION:

- Expansion coupling not req'd for meters set inside buildings.
- When the dom. meter is installed in the building, the by-pass line must be installed either on the wall side and parallel with the meter, or above the meter.
- The meter location shall NOT be within a closet, crawl space, garage, unheated area or any enclosure not approved by PSW Co.
- In buildings, concrete blocking under bends are to be poured AFTER meter is set.
- The distance between the domestic and fire lines (when laid parallel) shall be twice the "L" dimension of the fire line.

BACKFLOW PREVENTERS:

- If a backflow prevention device is required, as indicated on the service application form, and/or service approval letter, please contact PSW Co. Cross-Connection Dept. for type of device, location and installation information.
- On all service lines, if a backflow prevention device is required (protecting the entire service line) then the check valve by the meter is not required.
- Backflow preventers are to be installed downstream of the meter and before any outlet or branch connections.

NOTE: IF BUILDER SELECTS TO USE A DUAL-SERVICE PIT, THEN DIM. "A" OR "A1" OF THE DUAL-SERVICE PIT, SHALL BE THE "B" DIM. OF THE SINGLE-SERVICE PIT "A" OR "A1" DIM. FOR FIRE AND DOMESTIC LINE.

DUAL-SERVICE PIT - "B" DIM. (MINIMUM)
(Combination Dom. and Fire)

SIZE SERV.	1 1/2"	2"	4"	6"	8"	10"
1 1/2"	6'-0"	6'-0"	7'-0"	7'-0"	8'-0"	8'-0"
2"	6'-0"	6'-0"	7'-0"	7'-0"	8'-0"	8'-0"
4"	7'-0"	7'-0"	8'-0"	8'-0"	9'-0"	9'-0"
6"	8'-0"	8'-0"	8'-0"	8'-0"	10'-0"	10'-0"
8"	8'-0"	8'-0"	9'-0"	9'-0"	10'-0"	10'-0"

BOHLER ENGINEERING

SITE CIVIL AND CONSULTING ENGINEERING
LAND SURVEYING PROGRAM MANAGEMENT LANDSCAPE ARCHITECTURE
PERMITTING SERVICES TRANSPORTATION SERVICES
SUSTAINABLE DESIGN

PAID BY THE CLIENT
 • ALABAMA
 • ARIZONA
 • ARKANSAS
 • CALIFORNIA
 • COLORADO
 • CONNECTICUT
 • DELAWARE
 • FLORIDA
 • GEORGIA
 • ILLINOIS
 • INDIANA
 • IOWA
 • KANSAS
 • KENTUCKY
 • LOUISIANA
 • MARYLAND
 • MASSACHUSETTS
 • MICHIGAN
 • MINNESOTA
 • MISSISSIPPI
 • MISSOURI
 • MONTANA
 • NEBRASKA
 • NEVADA
 • NEW HAMPSHIRE
 • NEW JERSEY
 • NEW YORK
 • NORTH CAROLINA
 • NORTH DAKOTA
 • OHIO
 • OKLAHOMA
 • PENNSYLVANIA
 • RHODE ISLAND
 • SOUTH CAROLINA
 • SOUTH DAKOTA
 • TENNESSEE
 • TEXAS
 • UTAH
 • VIRGINIA
 • WASHINGTON
 • WEST VIRGINIA
 • WISCONSIN
 • WYOMING

1600 MANOR DRIVE, SUITE 200
CHALFONT, PENNSYLVANIA 18914
Phone: (215) 996-9100
Fax: (215) 996-9100
www.BohlerEngineering.com

PROFESSIONAL ENGINEER
PENNSYLVANIA LICENSE # PE071643

REVISIONS

REV	DATE	COMMENT	BY
1	08/31/2018	PER DOT COMMENTS	MCM

CALL BEFORE YOU DIG!

PENNSYLVANIA LAW REQUIRES
3 WORKING DAYS NOTICE FOR
CONSTRUCTION PHASE AND 10
WORKING DAYS IN DESIGN
STAGE - STOP CALL

PAI
POCS SERIAL NUMBER
1-800-242-1776

NOT APPROVED FOR CONSTRUCTION

PROJECT No.: PC181016
DRAWN BY: MCM
CHECKED BY: EAB
DATE: 2018.07.13
SCALE: AS NOTED
CAD ID: PC181016 DETAILS-1

PRELIMINARY LAND DEVELOPMENT PLANS

FOR

WAYNE PROPERTY ACQUISITION INC.

ROUTE 30 (LANCASTER AVE)
& ABERDEEN AVE
RADNOR TOWNSHIP
DELAWARE COUNTY, PA

BOHLER ENGINEERING

1600 MANOR DRIVE, SUITE 200
CHALFONT, PENNSYLVANIA 18914
Phone: (215) 996-9100
Fax: (215) 996-9100
www.BohlerEngineering.com

LA BRITZ ENGINEERING

PROFESSIONAL ENGINEER
PENNSYLVANIA LICENSE # PE071643

SHEET TITLE:
DETAILS

SHEET NUMBER:
17
OF 19

REVISION 1 - 2018.08.31