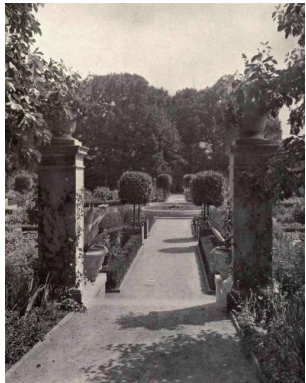


# Ithan Valley Park

642 South Ithan Avenue, Bryn Mawr  
20.5 acres, Ward 5

Once known as the Grow Tract, Ithan Valley Park was part of an estate owned by John Evans that was donated to the Township for use as a park when the Blue Route was constructed in 1973. In the 18th and 19th centuries, a family mill and farm was run on the land. Remnants of an old mill are located near the parking area. The site was transformed in the 1900s into a grand estate known as Timberline. Both the owners of the mill and estate were keenly interested in botany and collected trees from both North America and the Old World. The Ithan Valley Tree Identification Committee was formed to identify which trees were either old enough to have been part of the original collection or seedlings of those trees. There are 22 species identified and are roughly located going up the old driveway from what is now the parking area. They include White Oak, Fir, Tulip, Sugar Maple, Magnolia, Buckeye, False Cypress, and Cork, to name a few. In the mid-1800s, prior to being turned into an estate, Ithan Valley Park was regarded as one of the most significant botanical sites in the United States. In 2011, the Friends of Ithan Valley Park was formed to celebrate the history of the park and begin a preservation effort. The Friends have been working on various projects to enhance the park and call attention to its heritage as an arboretum and its historical trees. What a fascinating park right here in Radnor Township!



# Radnor Township

Saturday, September 24, 2016

1:00 PM

(Meet at the parking lot off of South Ithan Avenue)

# Ithan Valley Park *Dedication Celebration!*



*Thank You for joining us!*



**Thank you for joining Radnor Township and the Friends of Ithan Valley Park as we host a dedication ceremony to celebrate the Park's improvements!**

Ithan Valley Park was instated as a park in 1973. Originally part of the Timberline estate when the Blue Route was built, the section which is now the park was severed from the estate tract. Primarily a stream and woodland park, there are 22 species of trees identified at the park. There are also wonderful spring wildflower displays. One of the new signs just installed lists 15 of the species with *Quick Reader Codes*, helpful in giving descriptive information about each of the trees. This dedication is also focusing on other new features throughout the park along with celebrating the many community members who give their time and energy to help the park's developments. Thank you to everyone involved in this effort and the Friends of Ithan Valley Park for all of their vision and dedication!

Welcome.....Friends of Ithan Valley Park, Representative  
Remarks .....Bill Thomas, Executive Director, Chanticleer  
Remarks .....Radnor Boy Scouts, Representative  
Remarks.....Radnor Township Board of Commissioners  
Remarks .....Tammy Cohen, Director of Recreation  
Remarks.....Radnor Township Parks & Recreation Board  
Remarks .....Robert Zienkowski, *Township Manager*

**Thank you to the Friends of Ithan Valley Park  
and the Radnor Boy Scouts!**

**[www.radnor.com/ivp](http://www.radnor.com/ivp)**



***New Park Kiosk  
And  
Quick Reader  
Codes Sign***



***New and Improved!***  
***QR codes are now available to provide immediate information on the beautiful trees that make this park so unique. This new kiosk also includes a brief history on the park!***

**Thank you to the Radnor Boy Scouts and their Projects!**

- Trail from Top to Stream—Kevin Janson
- Communications Board—Taylor Rish-Klemm
- Steps from Stream to Millrace—Kyle Waddell
- Trail Markers—Matt Wilcox
- Scenic Points with Benches—Jack Doughan
- Tree Tags—Charlie Connolly
- Steps to Macadam Road—Cal Doughan
- Landscape Timber Steps Improvement—Nick Kemp
- Bench Near Falls (in the works)—Arman Hoseyni



**BOY SCOUTS  
OF AMERICA®**