

Radnor Township Ward Redistricting Assessment

Prepared and submitted by
Amanda Holt

September 16, 2022

Current Wards & 2020 Census

Radnor Township is currently divided into seven wards. The population of each ward must fall within the acceptable population range based on the 2020 Census.

Acceptable population range: 4,511–4,985 persons

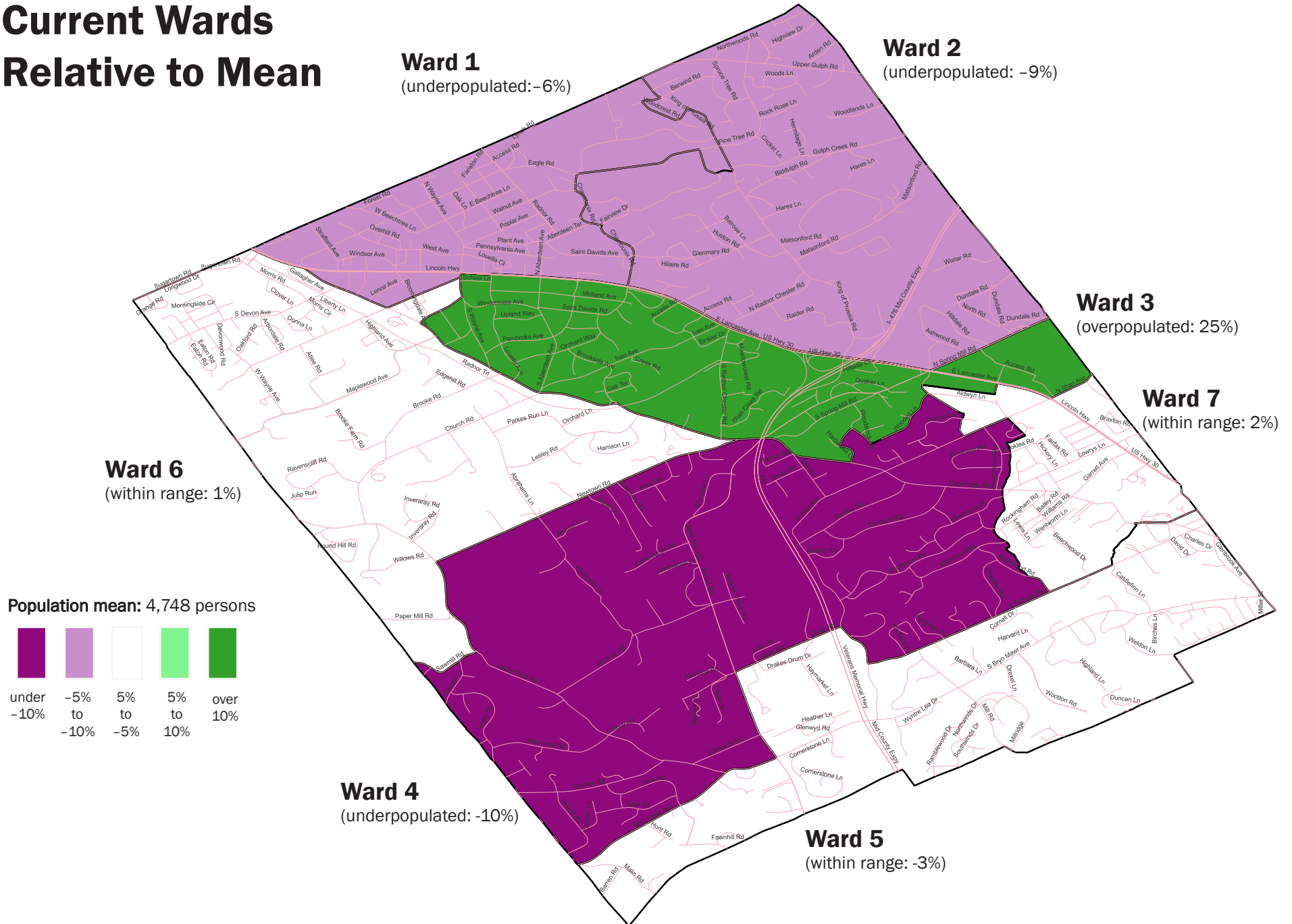
Population mean: 4,748 persons

Population Table

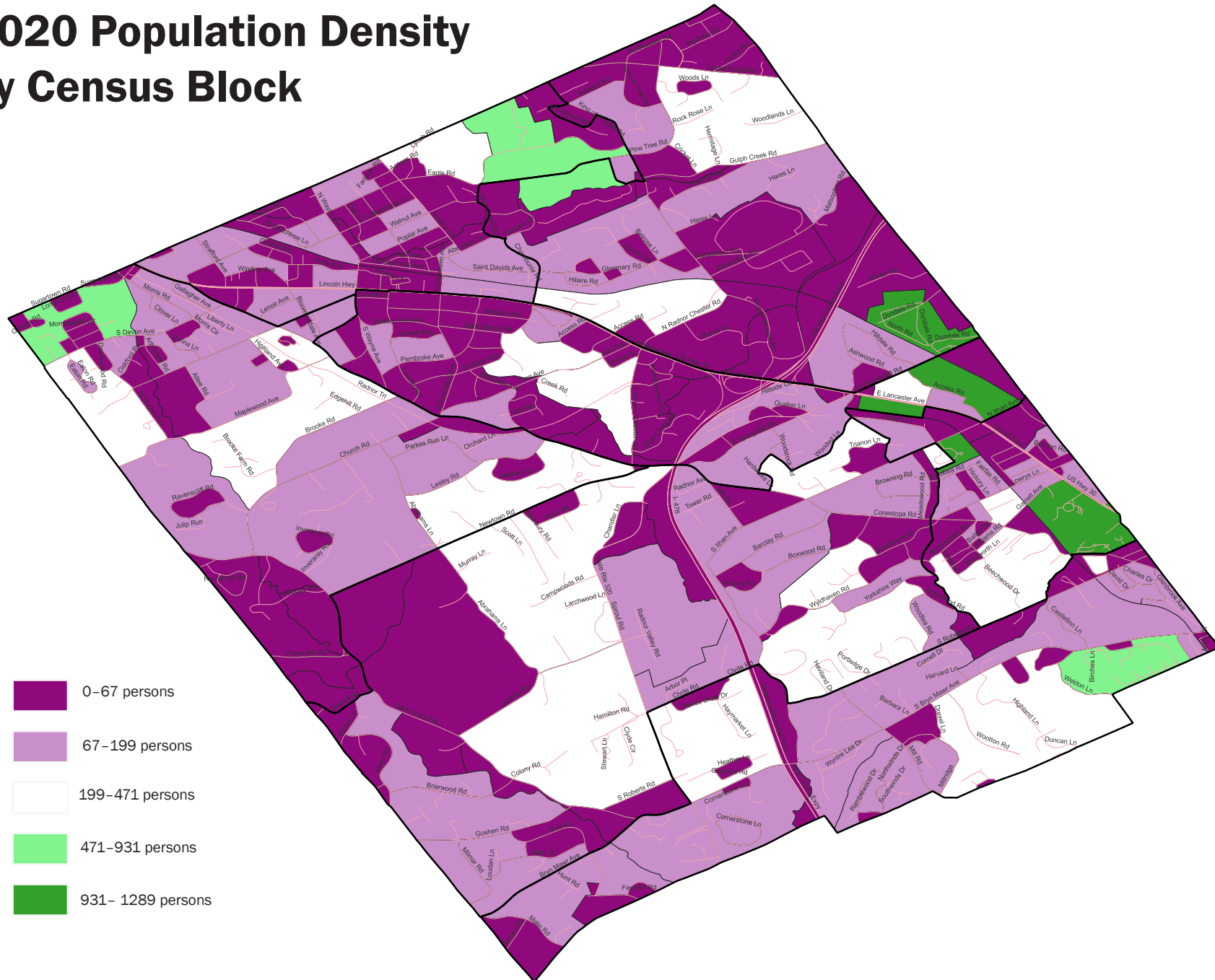
	2020 Census Population	Variance from mean (percentage)	Variance from mean (numeric)
1	4,488	-5.5%	-260
2	4,301	-9.4%	-447
3	5,958	25.5%	1210
4	4,267	-10.1%	-481
5	4,607	-3.0%	-141
6	4,783	0.7%	35
7	4,829	1.7%	81

Wards 5, 6, and 7 are within the acceptable population range.
The remaining wards fall outside of the acceptable population range.

Current Wards Relative to Mean



2020 Population Density by Census Block



Initial Observations based on Assessment

The following are observations to consider if taking a least change approach (making the fewest changes required to bring each ward within the acceptable population range).

1. It is possible to make no changes to the boundaries of Wards 5, 6, and 7, which are within the acceptable population range.
2. Over half of the population of Ward 3 is heavily concentrated in far eastern portion of the ward (in the area of Villanova University).
3. Taking a least change approach would require moving about 500 persons from Ward 3 to Ward 4. Then the remainder of Ward 3 as well as Ward 1 and 2 would need to be reconfigured based on population density.

The information provided in this assessment is true and accurate to the best of my knowledge.

Respectfully submitted,

Amanda Holt