

**RADNOR TOWNSHIP**

# Overview of Trail Projects for Input from Parks and Recreation

Darby-Paoli Multiuse Trail and  
Harford Park Trail

October 11, 2018

MELIORA DESIGN | CIVIL ENGINEERS

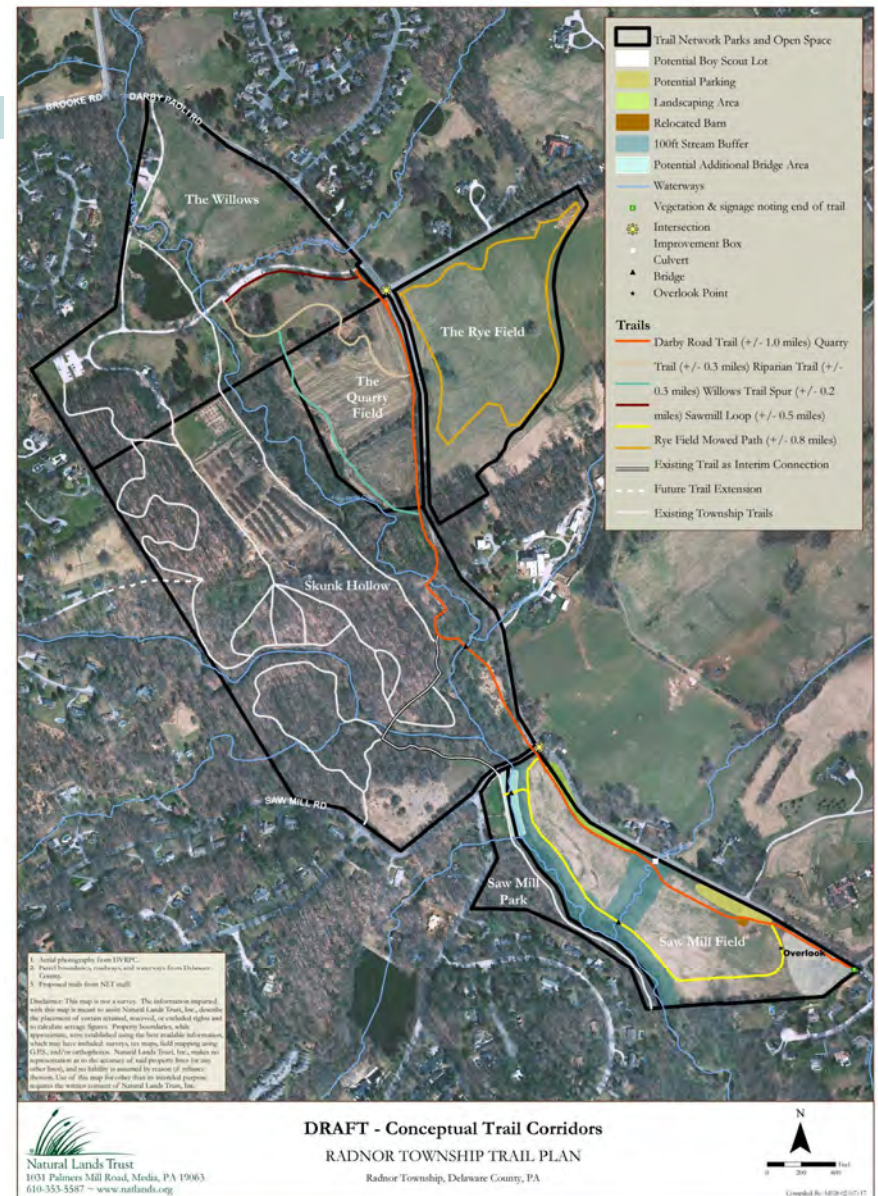
**meliora** 

# Darby-Paoli Multiuse Trail

Connecting:  
The Willows  
Skunk Hollow  
Saw Mill Parks  
Former Ardrossan Estate

- Approximately 1 mile paved multi-use trail
- Several miles “soft” trails
- Two bridges and several culvert crossings
- Coordinated with Skunk Hollow Sewer Main replacement
- PennDOT
- Small Parking lot(s)

Meliora and McMahon Associates





# Darby-Paoli Multiuse Trail

## Completed to date

### Completed

- Topographic Survey
- Wetlands Delineation
- Preliminary Layout
- Initial Design
- ADA considerations

### Design Decisions

- Bridges will carry Public Works vehicles
- Coordination in Skunk Hollow with Sewer Repair
- Potential Additional Parking Lot on Saw Mill Road
- Rye Field Crossing



# Darby-Paoli Multiuse

## Next Steps

### Next Steps

- Geotechnical Borings at Skunk Hollow and Sawmill Bridges (scheduled)
- Refined grading and conceptual stormwater management (underway)
- Stake and walk trail with arborist
- Resident meetings and Open Walk
- Shade Tree & Radnor Conservancy
- Develop Construction Estimate

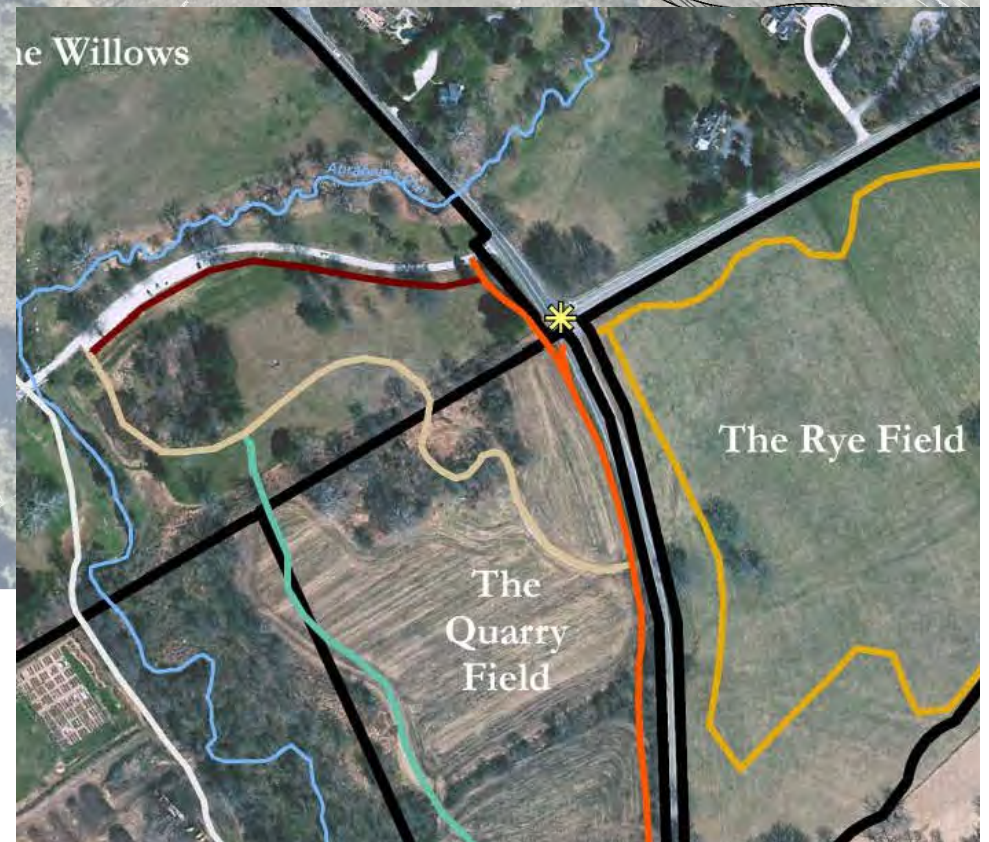
Apply for Construction  
Funding in 2019







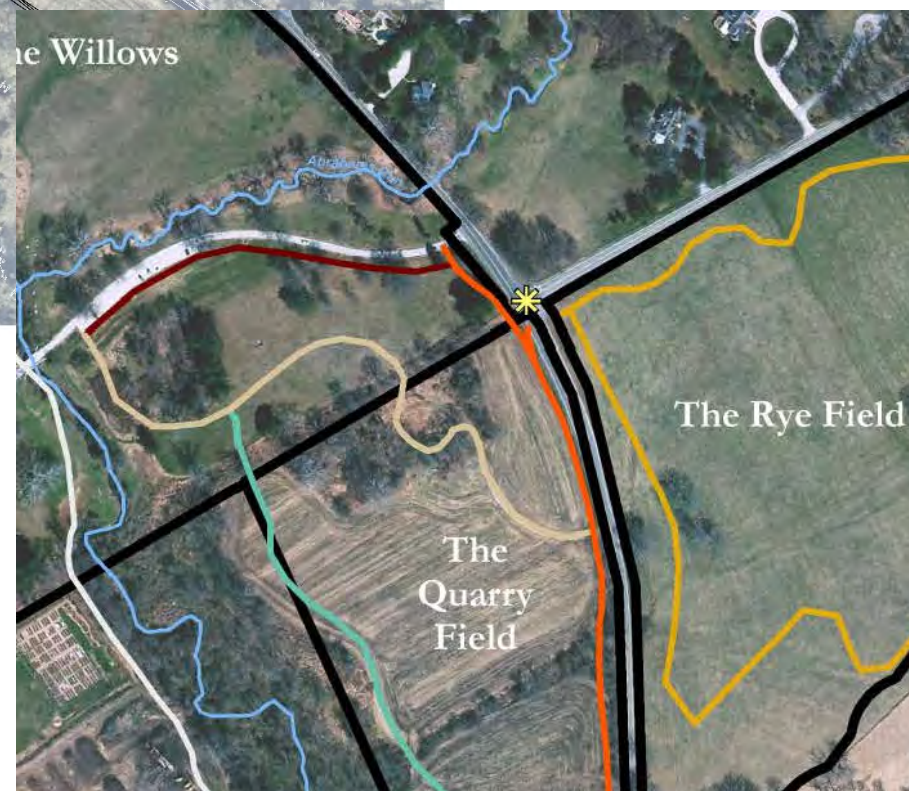
# The Willows











# Darby-Paoli Road and Newtown Rd

11/8/2018









11/8/2018













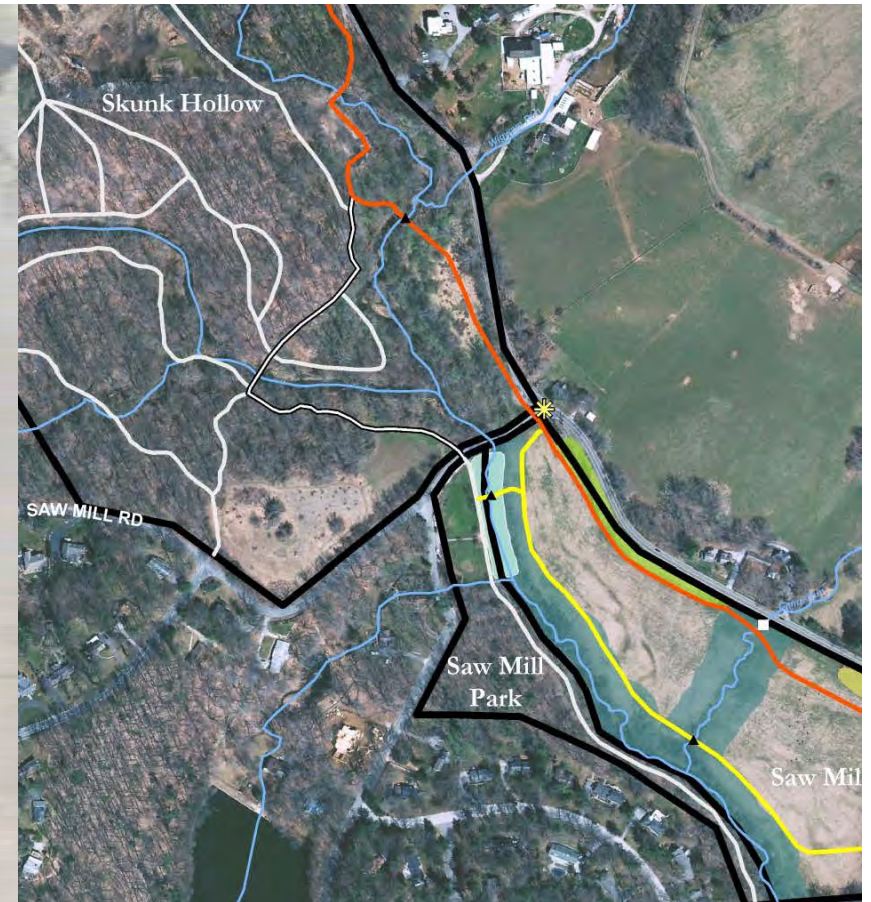












Sawmill Road









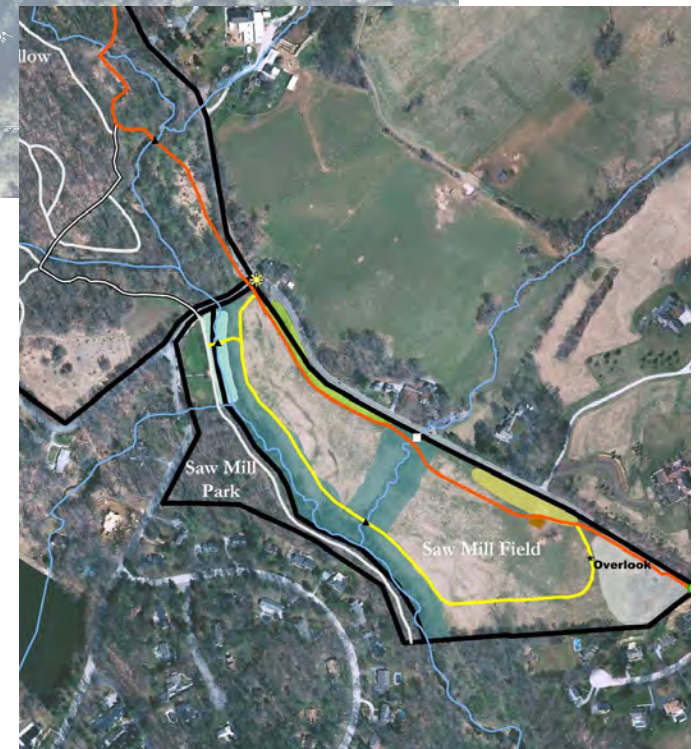








Cow Pasture







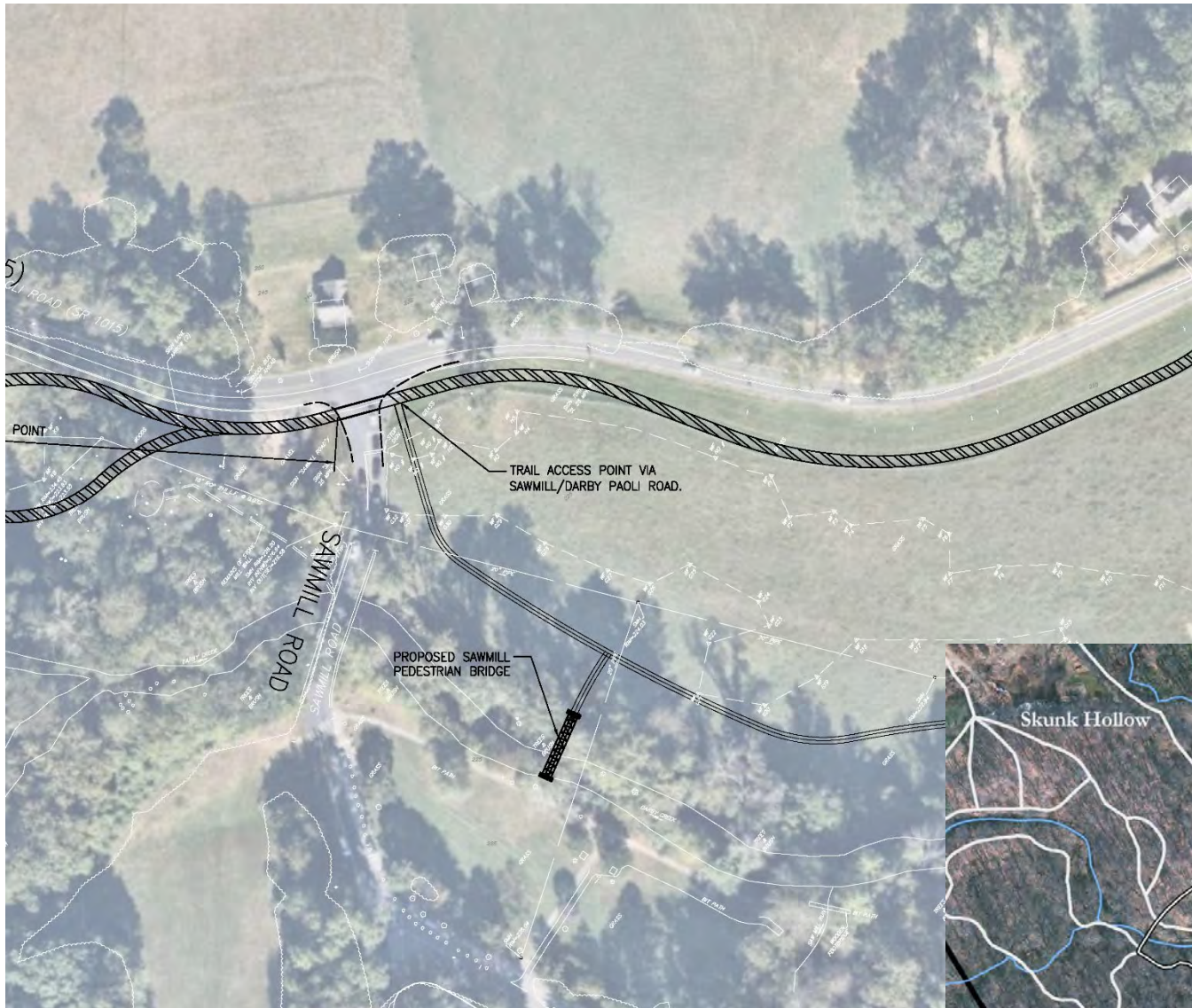




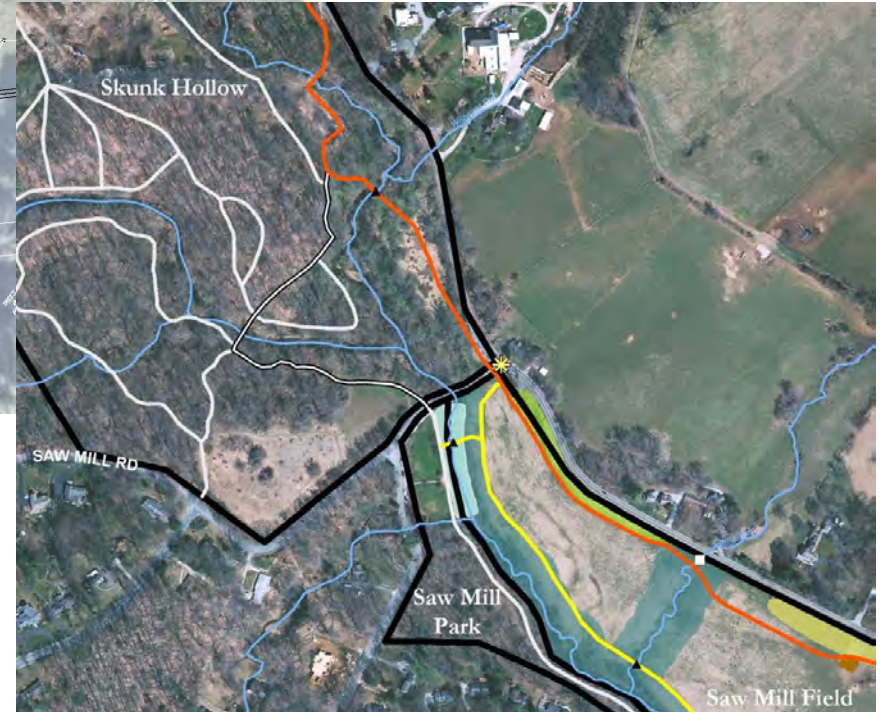








# Sawmill Park Pedestrian Bridge







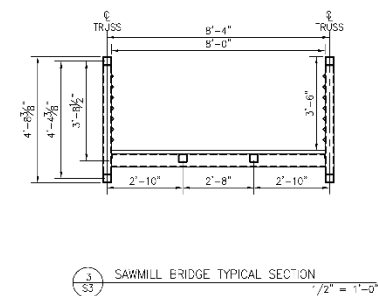
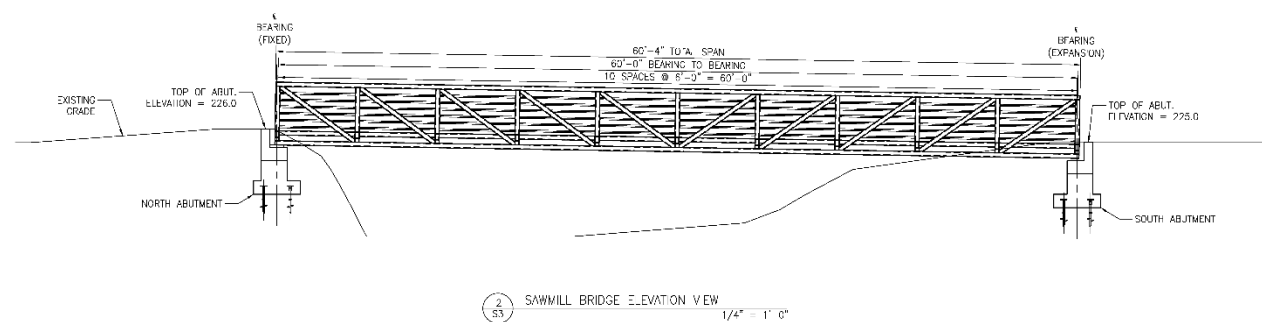
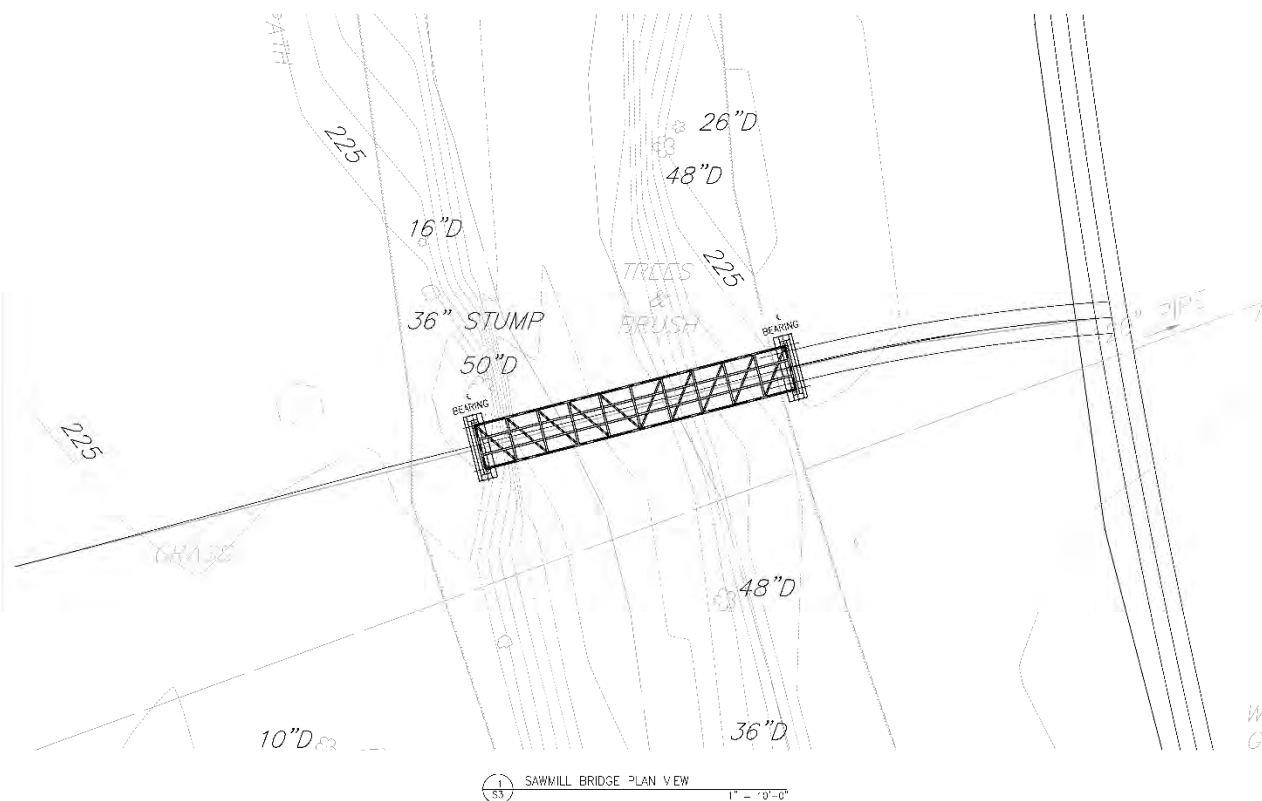












**NOTES:**

1. FOR GENERAL NOTES SEE S1

[illegible]

OWNER:

RADNOR TOWNSHIP  
301 IVEN AVE  
WAYNE, PA 19087

CIVIL ENGINEERING CONSULTANT

**meliora**   
 Civil Water Resources and Structural Engineering  
 250 Alameda St., Philadelphia, PA 19106  
 P 215 595-8122 [www.melioraconsulting.com](http://www.melioraconsulting.com)

MELICA DESIGN  
THE AMERICAN SRI—  
PITTSBURGH, PA 15202  
412.933.0123  
WWW.MELICADSIGN.COM

LANDSCAPE ARCHITECT:



NATURAL LANDS  
1001 Palmes Mill Road  
Jenkintown, PA 19063

TRAFFIC CONSULTANT

**MCMAHON**  
TRANSPORTATION ENGINEERS & PLANNERS

MCMAHON ASSOC., A.I.S.  
240 Springdale Drive  
Evanston, PA 19341

NR02.DCF.TLC:

DARBY-PAOLI  
TRAIL PROJECT

SEA:

## SUMMARY

## SCHEMATIC DESIGN

TRAINING FILE
1
2
3
4
5
6
7
8
9
10
11
12
13
14
15
16
17
18
19
20
21
22
23
24
25
26
27
28
29
30
31
32
33
34
35
36
37
38
39
40
41
42
43
44
45
46
47
48
49
50
51
52
53
54
55
56
57
58
59
60
61
62
63
64
65
66
67
68
69
70
71
72
73
74
75
76
77
78
79
80
81
82
83
84
85
86
87
88
89
90
91
92
93
94
95
96
97
98
99
100

SAWMILL BRIDGE PLAN VIEW &amp; ELEVATION

DATE: \_\_\_\_\_

47470-5

SCALE  
AS NOTED

246,974 美元

504

**CITATION:**

JNA

---

S3



# Darby-Paoli Multiuse Trail

## Potential Funding Sources

Design Budget: \$498,500

35% Spent

Complete Design to seek  
2019 Funding

- PennDOT Multimodal Transportation Fund (MTF)
- CFA/DCED Multimodal Transportation Fund (MTF)
- Community Conservation Partnerships Program (C2P2)
- Greenways, Trails and Recreation Program (GTRP)

