



A Vision for Clem Macrone Park & Eastern Gateway

Parks & Recreation Board Presentation

April 10, 2014



KIMMEL BOGRETTE
Architecture + Site



Architecture + Site = The Essence of This Project



KIMMEL BOGRETTE
Architecture + Site

- *Your Community Park presents a unique opportunity.*
- *Your Community deserves a unique response.*
- *We offer a unique:*
 - ➔ *Team*
 - ➔ *Process*
 - ➔ *Experience*
 - ➔ *Sensitivity*



KIMMEL BOGRETTE
Architecture + Site



Who Is Kimmel Bogrette?

- *The Mission:*
To provide **EXTRAORDINARY SOLUTIONS FOR ORDINARY BUDGETS**
- *The Commitment:*
Municipal Specialists with a dedication to integrate architecture and landscape ...



Who Is Land Studies?



- *Creating Functional, Natural Landscapes*
- *Solid foundation of diverse technical expertise and grounded in years of experience*
- *As our name says we study the land and then design, manage, construct, plant, maintain, and monitor the results*



We Have the Process: *MasterConcept™ Planning ...* *Our Proven Process Is Your First Step to Success*



Mission Driven Intelligence:

- *Documenting the Project Mission:*
- *Understanding the Need*
- *Identifying the Constraints*
- *Developing Enlightened Solutions*



MasterConcept™ Planning ... Requires Your Input



- *Avoiding design confusion by asking the right questions.*
- *Mission-driven toward objective consensus.*
- *Develop consensus between community, municipality, and approving agencies.*



KIMMEL BOGRETTE
Architecture + Site

Land
studies

The Opportunity...

Project Mission

- *Create a Crowning Jewel for the Community*
- *Raise the Bar for Parks in Radnor*
- *Create a Legacy for Radnor Township*



KIMMEL BOGRETTE
Architecture + Site

Land
Studies

Steps completed to date:



Step 1 (January)

- *Visited the Site and analyzed existing conditions.
Met with neighbors and walked park.
Site Surveyed*

Step 2 (January 18th)

- *Met with the community group to understand their concerns and want they wanted to see in their park. Their input critical to process.*

Step 3 (February 26th)

- *Presented a design concept solution to community group and got their feedback.*

Step 4 (March 25th)

- *Presented a revised design concept solution based on community group input.*

Step 5 (Today)

- *Meet with the Parks & Recreation Board to get your feedback.*



Site Inventory

Planning for the Site – Clem Macrone





Issues & Constraints Identified

Neighbor Input Meeting

January 8, 2014

Traffic and Access

Lack of “Entry”

Visibility

Safety Concerns

Parking

Run-off / Drainage

Separation between park uses

Restrooms – poor condition

Event space is lacking

Service access



KIMMEL BOGRETTE

Architecture + Site



Park Ideas Identified

Neighbor Meeting - January 8, 2014



Active and Passive Uses

- *Walking Trails*
- *Picnic Areas*
- *Meeting/gathering spaces*
- *Sport fields / Courts*
- *Upgraded Veteran Memorial*
- *Rest rooms*
- *Playgrounds*
- *Spray park*
- *Gaga Court*
- *Pavilions & Amphitheatre*
- *Interpretive Signage*
- *Outdoor Concerts*
- *Farmers Markets*
- *Art Shows*
- *Access & Organization for July 4th Parade*

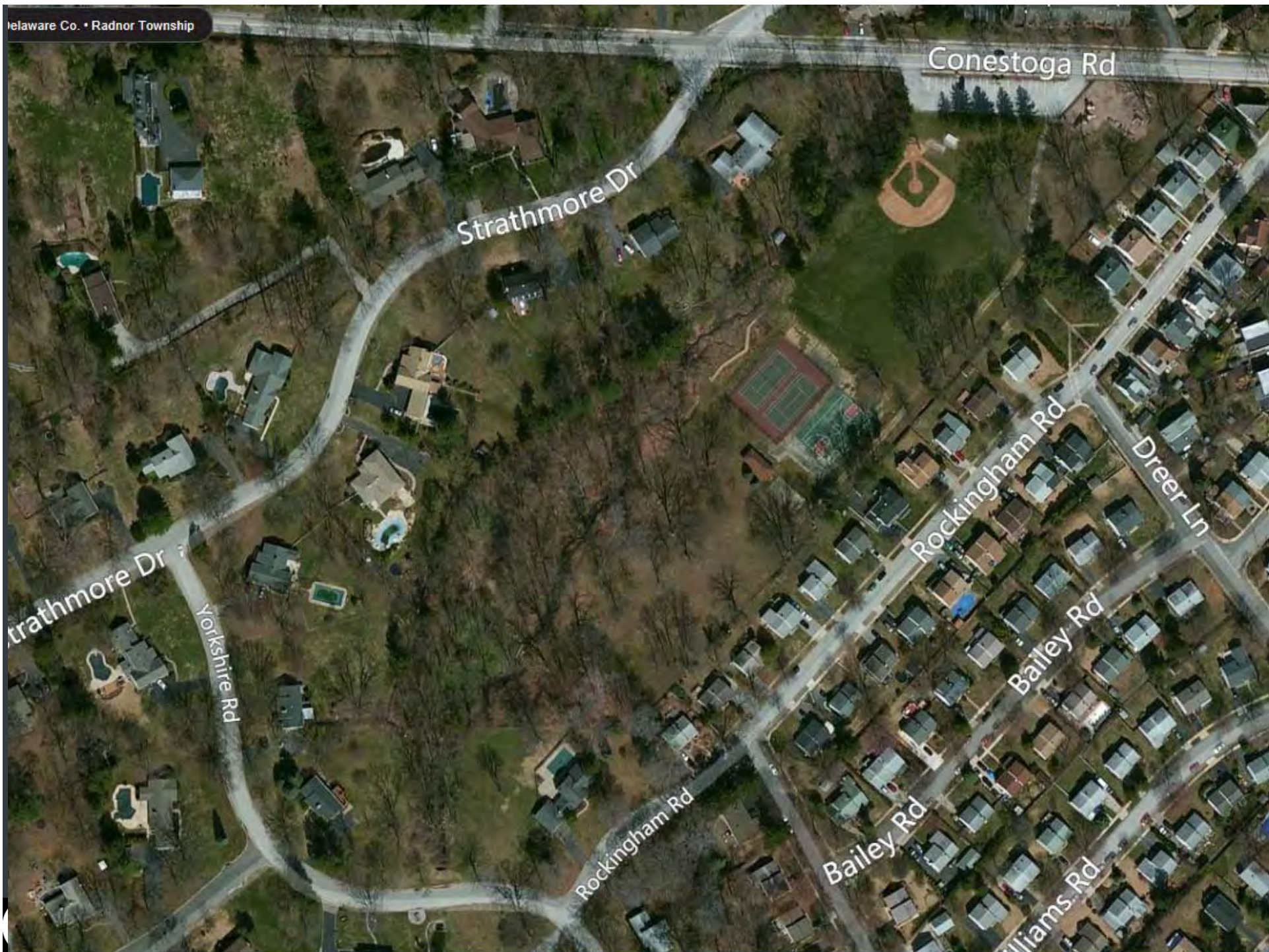
Environmental Resources

- *Improve drainage and run-off*
- *BMP's & demonstration projects*
- *Improve bio-diversity and water quality*
- *Stream bank restoration*
- *Increase canopy cover and trees*
- *Improve understory plant diversity*
- *Provide native habitats for diversity of plants and animals*



KIMMEL BOGRETTE
Architecture + Site





1st Conceptual Design Plan

February 26, 2014



Reference

- A Pedestrian Entrance / Gateway
- B Parking (25 spaces)
- C Active Use Area - Playground / Splash Park / Tot Lot / Picnic / bar-b-que
- D Promenade (8-10' wide)
- E Restrooms / Pavilion
- F Sport Fields / Courts
- G Memorial Garden / Grove
- H Event Field / Great Lawn / Amphitheater
- I Bio-retention Areas
- K Stage / Environmental Activity Hub
- L Wetland / Natural Area
- M Nature Trail

Revised Option

March 25, 2014



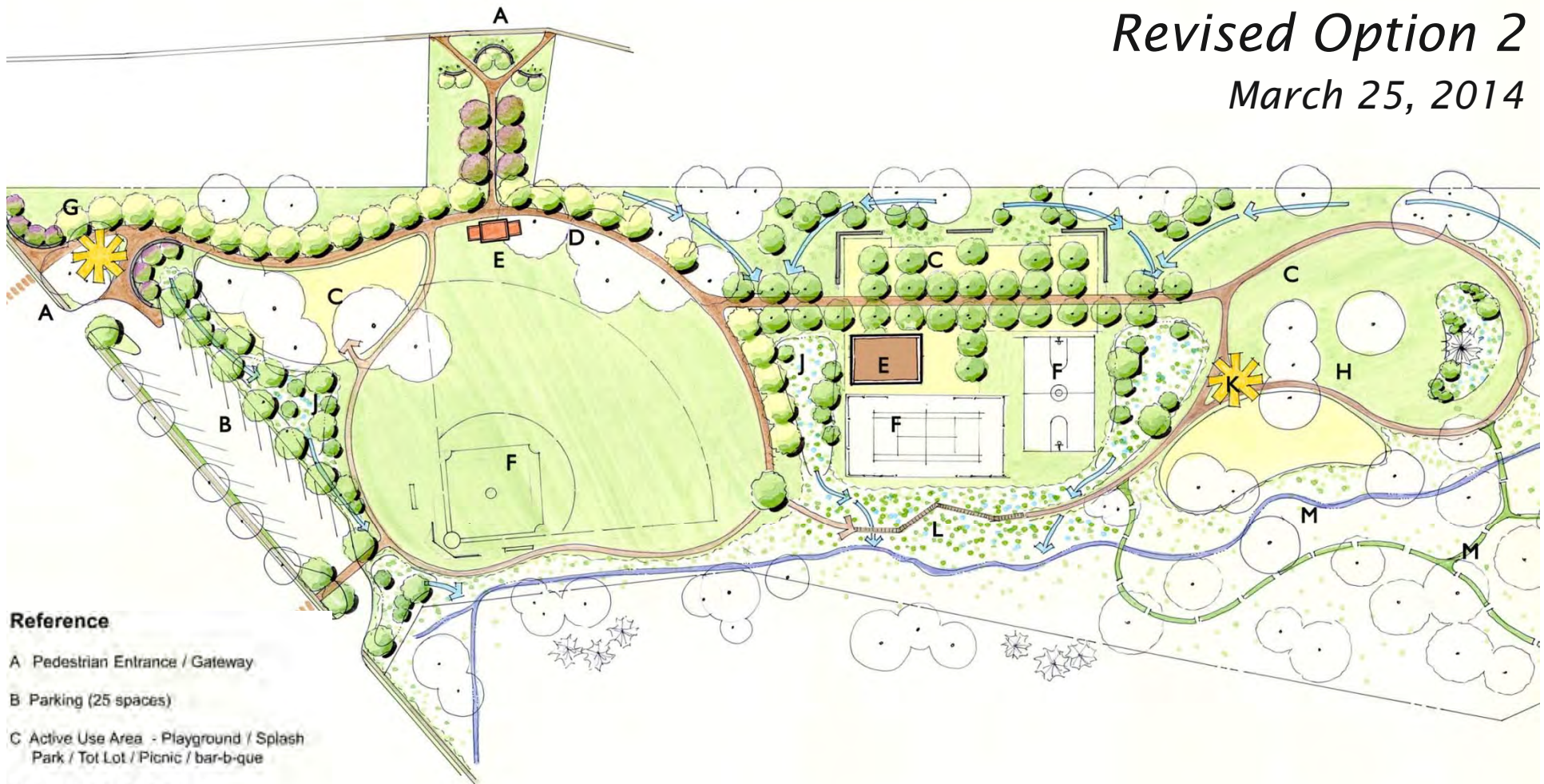
Reference

- A Pedestrian Entrance / Gateway
- B Parking (25 spaces)
- C Active Use Area - Playground / Splash Park / Tot Lot / Picnic / bar-b-que
- D Promenade (8-10' wide)
- E Restrooms / Pavilion
- F Sport Fields / Courts
- G Memorial Garden / Grove
- H Event Field / Great Lawn / Amphitheater
- I Bio-retention Areas
- K Stage / Environmental Activity Hub
- L Wetland / Natural Area
- M Nature Trail

Revisions based on February 26, 2014
community group comments

Revised Option 2

March 25, 2014



Reference

- A Pedestrian Entrance / Gateway
- B Parking (25 spaces)
- C Active Use Area - Playground / Splash Park / Tot Lot / Picnic / bar-b-que
- D Promenade (8-10' wide)
- E Restrooms / Pavilion
- F Sport Fields / Courts
- G Memorial Garden / Grove
- H Event Field / Great Lawn / Amphitheater
- I Bio-retention Areas
- K Stage / Environmental Activity Hub
- L Wetland / Natural Area
- M Nature Trail

Revisions based on February 26, 2014
community group comments

Today's Current Plan

April 7, 2014



Reference

- A Pedestrian Entrance / Gateway
- B Parking (25 spaces)
- C Active Use Area - Playground / Splash Park / Tot Lot / Picnic / bar-b-que
- D Promenade (8 - 10' wide)
- E Restrooms
- F Sport Fields / Courts
- G Memorial Tree Grove
- H Event Field / Great Lawn
- I Bio-retention Areas
- K Covered Stage / Environmental Activity Hub / Open Band Shell
- L Wetland / Natural Area
- M Nature Trail
- N Pavilion
- O Memorial Monument
- P Covered Stage / Platform

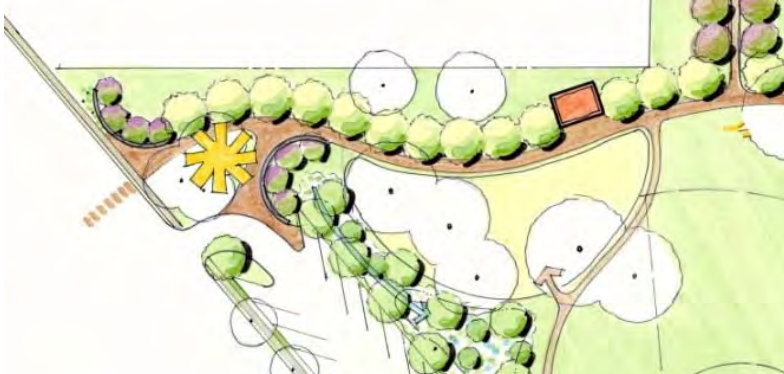
*Revisions based on March 25, 2014
community group comments*

Park Entry & Gateway



Active Use Area

Playground / Spray Park / Tot Lot / Picnic / bar-b-que / Gaga



Memorial Garden / Grove



E Grove & Pavilion



KIMMEL BOGRETTE
Architecture + Site

Studies

Stage / Environmental Activity Hub



KIMMEL BORDEN
Architecture + Site

studios

F Sport Fields / Courts



KIMMEL BOGRETTE
Architecture + Site

Wetland / Natural Area



M Nature Trail



KIMMEL BOGRETTE
Architecture + Site

Land
studies

Estimated Cost & DCNR Grant

March 25th Estimated Cost Range:

- \$1.2 million to \$1.8 million

- KBA & Land Studies is currently working with Township on a DCNR C2P2 Grant.
- Township is requesting \$500,000 from DCNR which would require a 50% match if awarded.

Next Steps

1. Finalize a Direction on Park Layout
2. Apply for DCNR Grant (April 16th Deadline)
3. Community Support at Commissioners Meeting (April 28th)

April 10th-April 28th:

Master Plan Revisions based on Parks & Rec. Input & Board of Commissioners

April 28th:

Board of Commissioners Presentation

May 12th:

Board of Commissioners Meeting for Final Master Plan Approval



KIMMEL BOGRETTE
Architecture + Site





Eastern Gateway Update



KIMMEL BOGRETTE

Architecture + Site



Site Inventory

Planning for the Site – Eastern Gateway





Issues

Utility Easement Maintenance and Constraints

Drainage – swale and road run-off

Invasive Plants

Visibility

Aesthetics

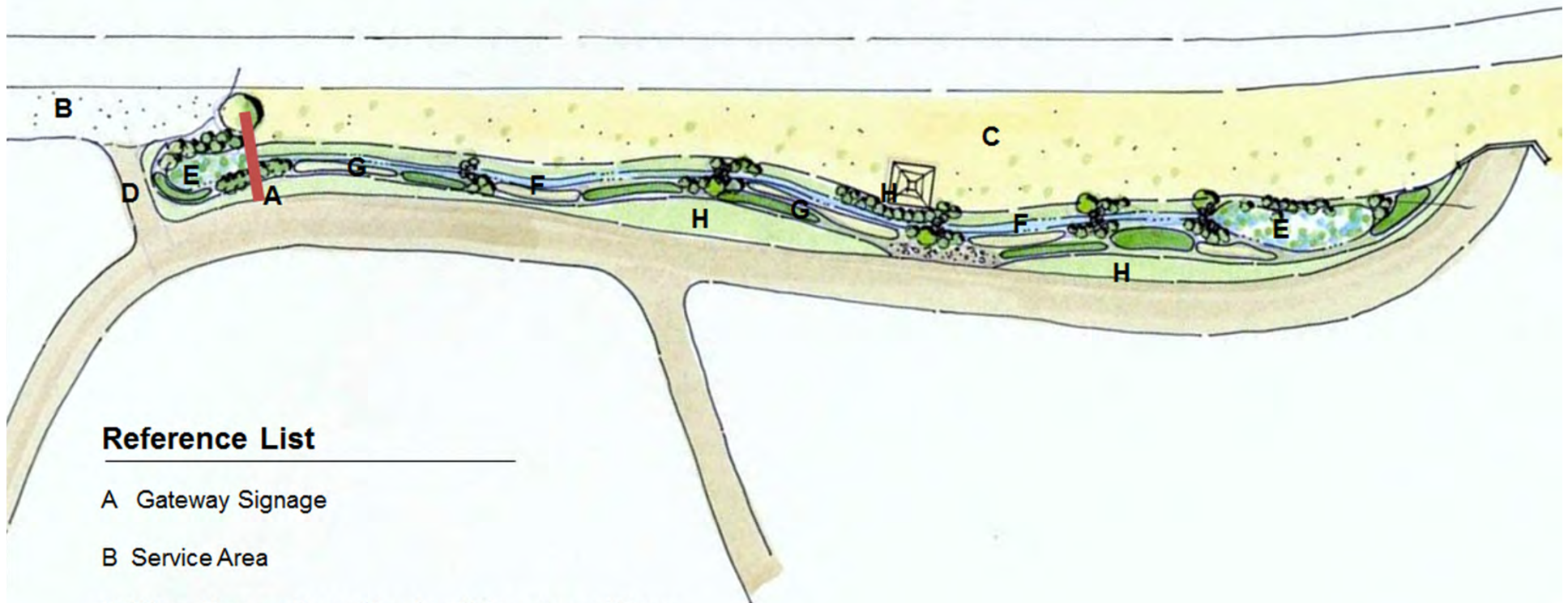
Service Access



KIMMEL BOGRETTE

Architecture + Site



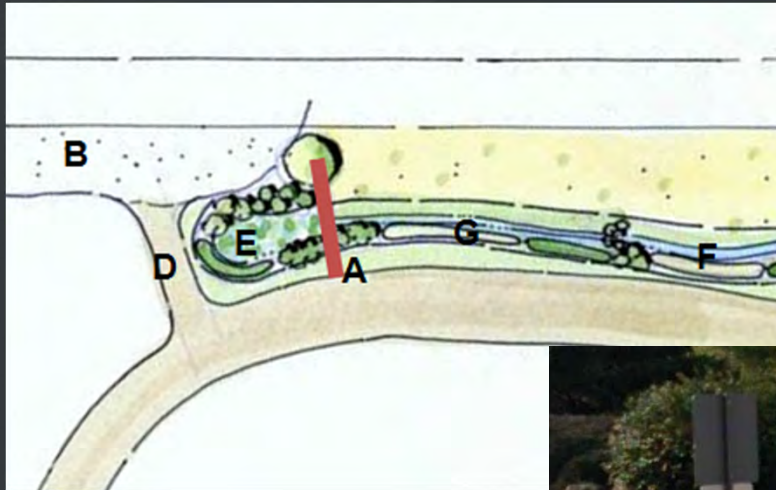


Reference List

- A Gateway Signage
- B Service Area
- C Warm Season Grass Meadow / Management Zone
- D Service Area Entrance
- E Feature Planting Area / Bio-retention
- F Restored / Stabilized Drainage Swale
- G Seasonal Interest Perennial Planting
- H Lawn

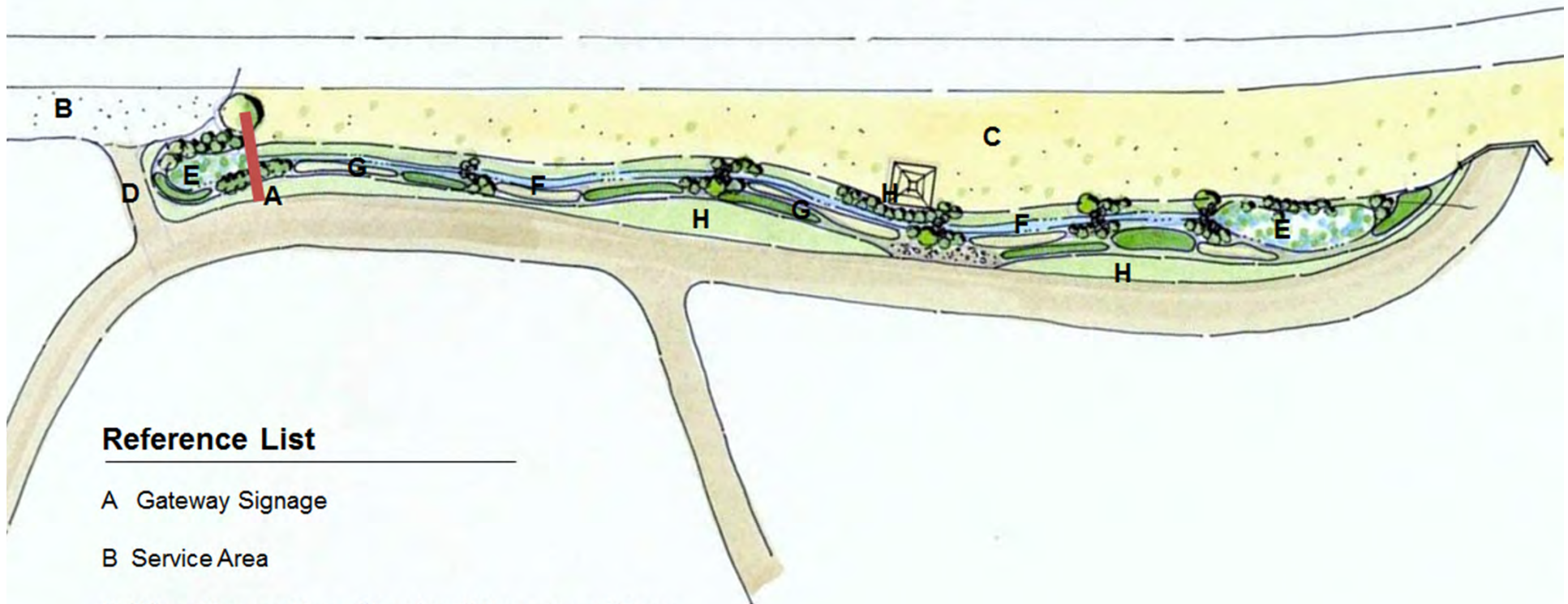


A Gateway Signage



KIMMEL BOGRETTE
Architecture + Site

Land
Studies



Reference List

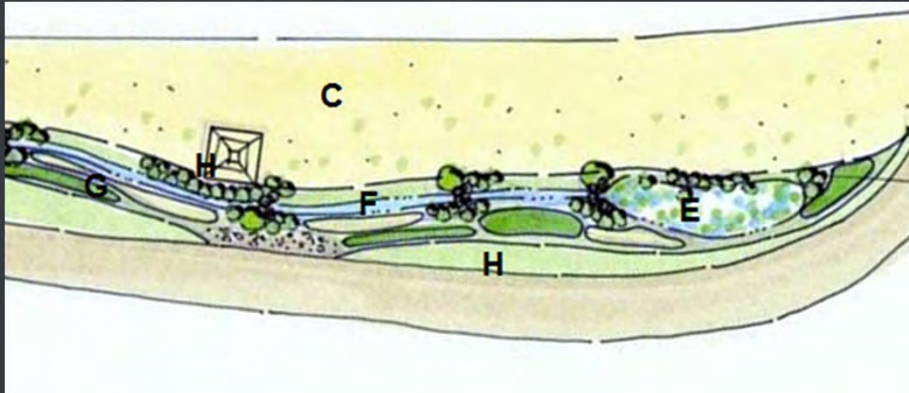
- A Gateway Signage
- B Service Area
- C Warm Season Grass Meadow / Management Zone
- D Service Area Entrance
- E Feature Planting Area / Bio-retention
- F Restored / Stabilized Drainage Swale
- G Seasonal Interest Perennial Planting
- H Lawn



KIMMEL BOGRETTE
Architecture + Site

Land
studies

C Warm Season Grass Meadow / Management Zone

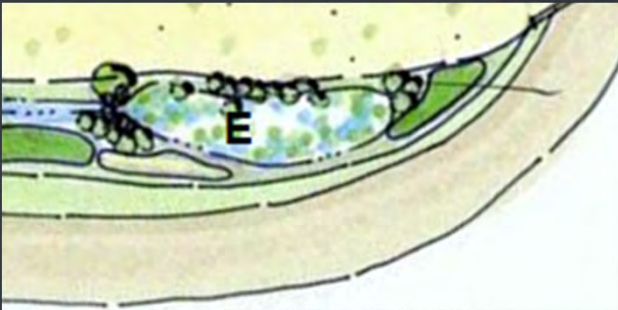


Native Warm Season Grasses

Switchgrass
Big Bluestem
Little Bluestem
Indiangrass
Broom Sedge
Sideoats Gramma
Eastern Gama



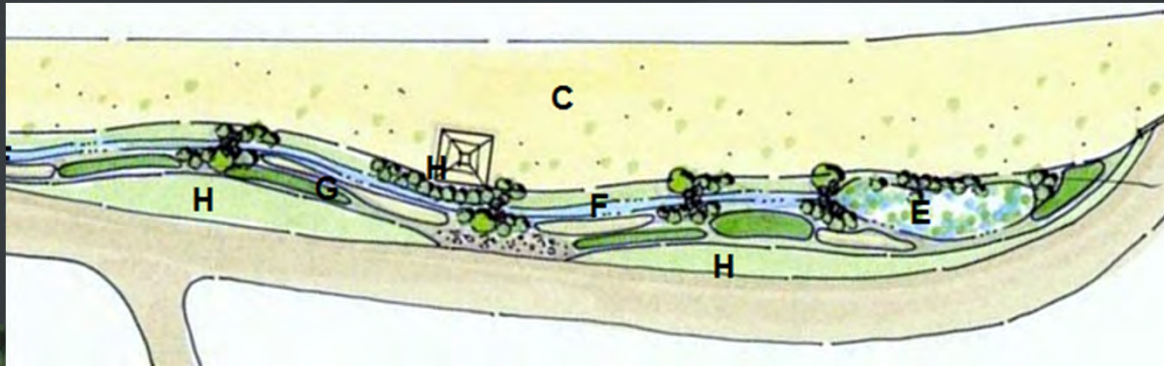
E Feature Planting Area / Bio-retention



F Restored / Stabilized Drainage Swale



G Seasonal Interest Perennial Planting



Questions & Answers



Your Input and Comments Welcome!



KIMMEL BOGRETTE
Architecture + Site

