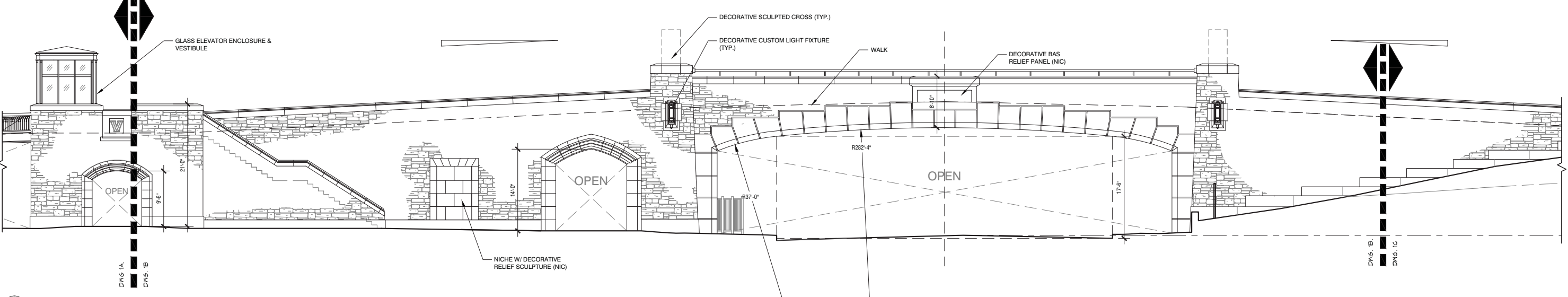
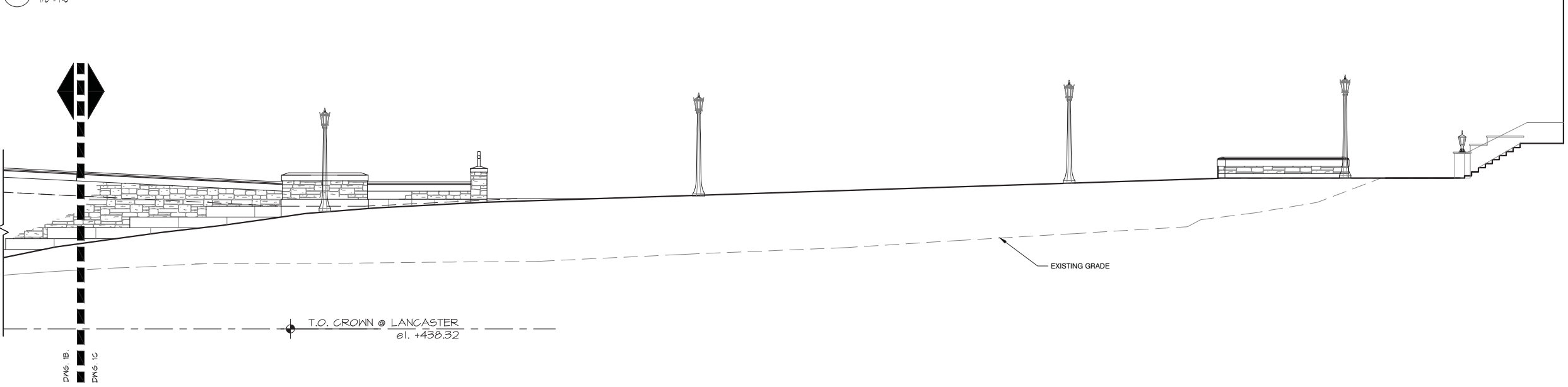


1A PEDESTRIAN BRIDGE - WEST ELEVATION
1/8" = 1'-0"

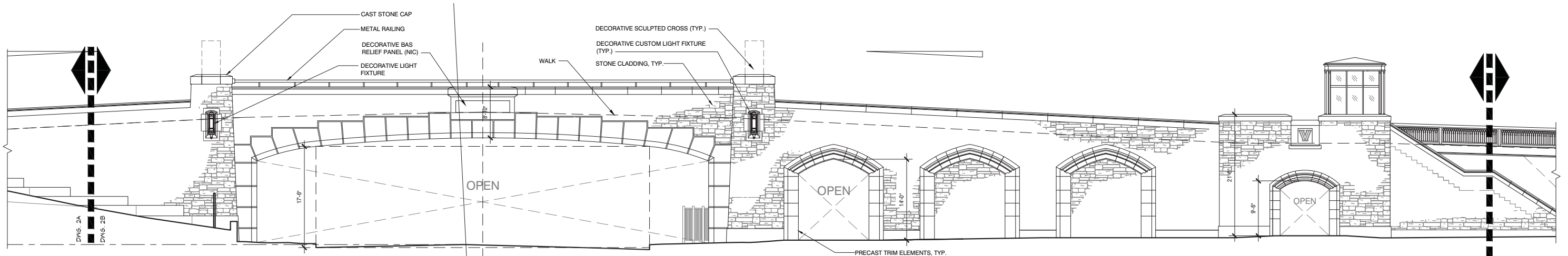
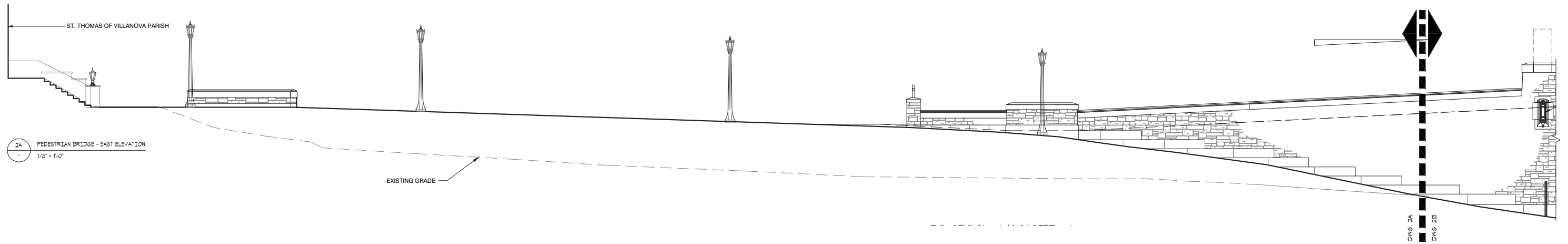


1B PEDESTRIAN BRIDGE - WEST ELEVATION
1/8" = 1'-0"

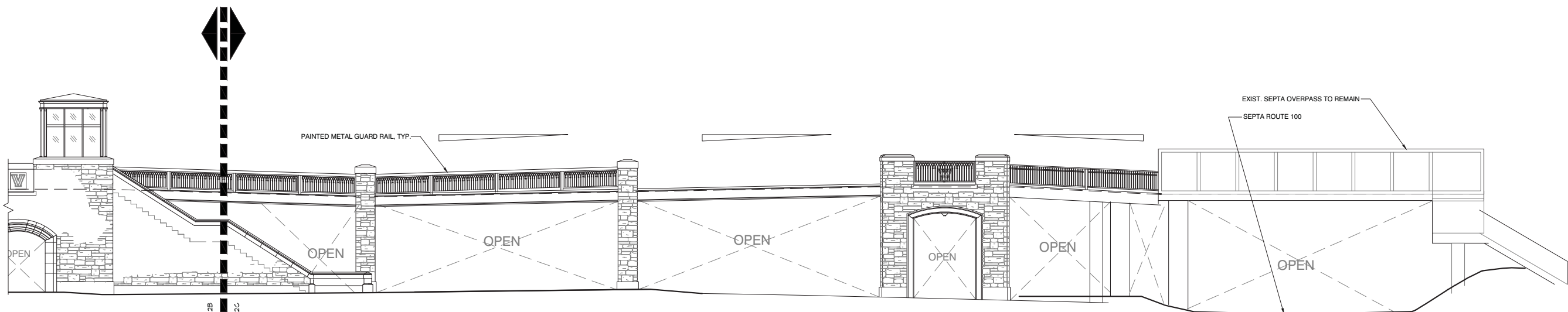


1C PEDESTRIAN BRIDGE - WEST ELEVATION
1/8" = 1'-0"

FOR REFERENCE.
 Design as approved by DRB
 September 2015
 Not to scale



2B PEDESTRIAN BRIDGE - EAST ELEVATION
1/8" = 1'-0"



2C PEDESTRIAN BRIDGE - EAST ELEVATION
1/8" = 1'-0"

Villanova University - Pedestrian Bridge
Exterior Elevations - Sheet 2 of 2

DESIGN REVIEW BOARD SUBMISSION - 2015 -09-23

FOR REFERENCE.
 Design as approved by DRB
 September 2015
 Not to scale



VIEW OF PEDESTRIAN BRIDGE LOOKING EAST - DESIGN CONCEPT PRESENTED MAY 2015

Villanova University - Pedestrian Bridge

DESIGN REVIEW BOARD SUBMISSION — 2015-09-23

FOR REFERENCE.
Images Presented Sept 2015

VMA
VOITH & MACTAVISH ARCHITECTS

RAMSA
ROBERT A.M. STERN ARCHITECTS



VIEW OF PEDESTRIAN BRIDGE FROM SOUTH SIDE OF LANCASTER AVENUE - DESIGN CONCEPT PRESENTED AGUST 2015

Villanova University - Pedestrian Bridge

DESIGN REVIEW BOARD SUBMISSION — 2015-09-23

FOR REFERENCE.
Images Presented Sept 2015

VMA
VOITH & MACTAVISH ARCHITECTS

RAMSA
ROBERT A.M. STERN ARCHITECTS



VIEW OF CHURCH FROM OPPOSITE SIDE OF LANCASTER AVE.



VIEW OF CHURCH FROM EXISTING PEDESTRIAN BRIDGE



VIEW OF CHURCH FROM OPPOSITE SIDE OF RR

Villanova University - Pike Garage

DESIGN REVIEW BOARD SUBMISSION — 2015-09-23

FOR REFERENCE.
Images Presented Sept 2015



VIEW OF CHURCH FROM CHURCH WALK

VMA
VOITH & MACTAVISH ARCHITECTS

RAMSA
ROBERT A.M. STERN ARCHITECTS