



Radnor Township

Parks & Recreation Facilities

*Thank you for taking a closer look at the
Parks, Facilities, & Recreational Amenities of Radnor Township!*

Radnor Township

Parks & Recreation Facilities



A Closer Look at the Parks, Facilities & Recreational Amenities of Radnor Township

Updated by the Recreation & Community Programming Department / July 2018

TABLE OF CONTENTS

PARKS & FACILITIES

	PAGE
ARDROSSAN	3
BISHOP RICHARD ALLEN PARK	4
BO CONNOR PARK	5
CLEM MACRONE PARK	6
COWAN PARK	7
EMLN TUNNELL PARK	8
ENCKE PARK	9
FENIMORE WOODS	10
FIFTH WARD PARK	11
FRIENDS OF RADNOR TRAIL PARK	12
HARFORD PARK	13
ITHAN VALLEY PARK	14
JAMES C. DITTMAR PARK	15
JOHN L. CAPPELLI MEMORIAL DRIVING RANGE	16
NORTH WAYNE PARK	17
ODORISIO PARK	18
PETRIE PARK	19
RADNOR ACTIVITY CENTER AT SULPIZIO GYM.....	20
RADNOR MEMORIAL PARK	21
RADNOR MULTIPURPOSE TRAIL	22
RADNOR TRAILS - SOUTHERN SECTION	24
RADNOR NATURE PARK	25
RADNOR SKATE PARK	26
SAW MILL PARK	27
SKUNK HOLLOW PARK	28
ST. DAVID'S PARK/VETERANS PARK.....	29
UNKEFER PARK	30
WARREN FILIPONE PARK	31
WEST WAYNE PRESERVE	32
WILLOWS MANSION/COTTAGE/PARK.....	33

GENERAL INFORMATION

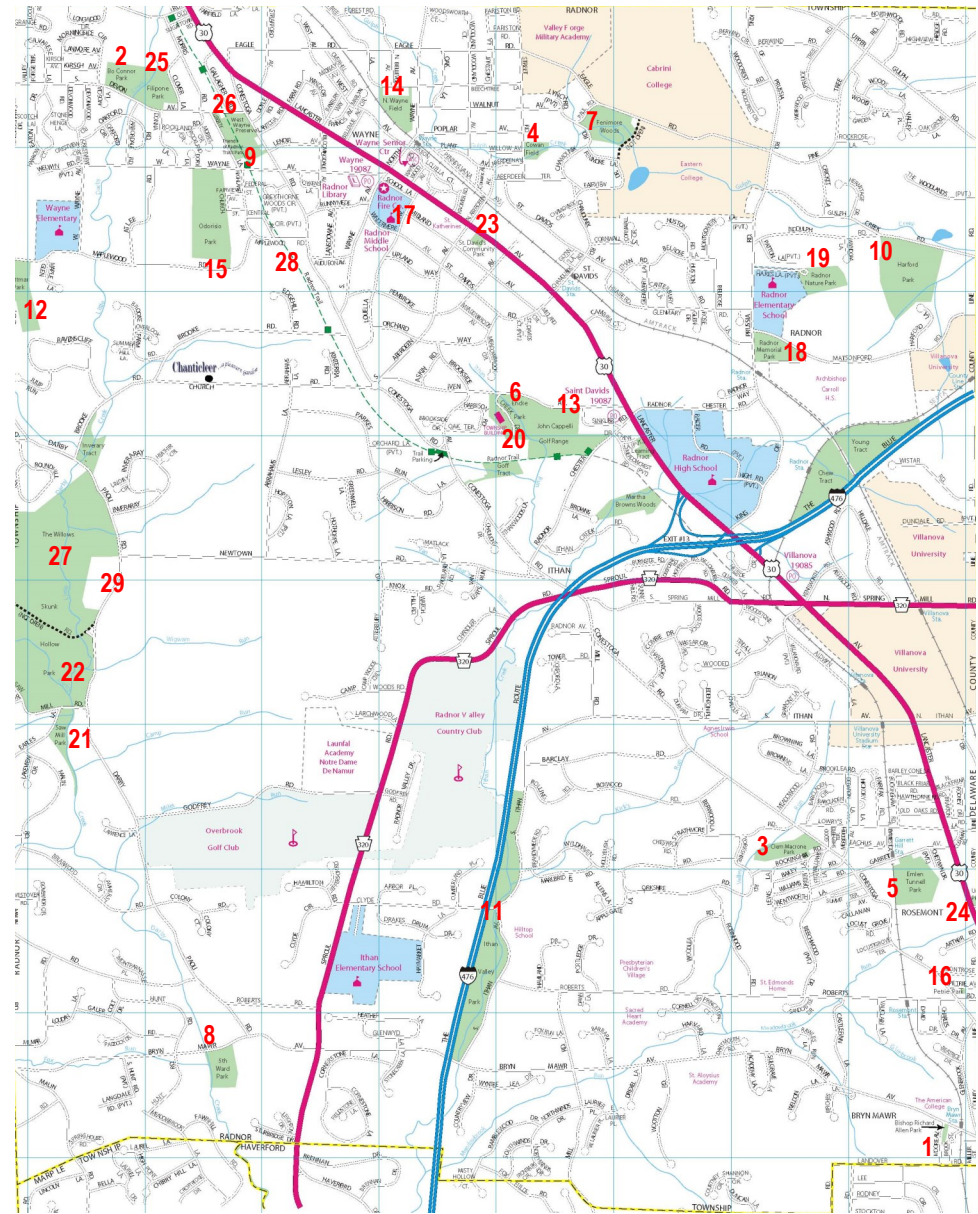
34

TOWNSHIP MAP

35

On the Cover/Clockwise:

Clem Macrone Park; Fenimore Woods; Skunk Hollow Park



1. BISHOP RICHARD ALLEN PARK	11. ITHAN VALLEY PARK	21. SAW MILL PARK
2. BO CONNOR PARK	12. JAMES C. DITTMAR PARK	22. SKUNK HOLLOW PARK
3. CLEM MACRONE PARK	13. JOHN CAPPELLI DRIVING RANGE	23. ST. DAVID'S PARK/VETERANS PARK
4. COWAN PARK	14. NORTH WAYNE PARK	24. UNKEFER PARK
5. EMLN TUNNELL PARK	15. ODORISIO PARK	25. WARREN FILIPONE PARK
6. ENCKE PARK	16. PETRIE PARK	26. WEST WAYNE PRESERVE
7. FENIMORE WOODS	17. RADNOR ACTIVITY CENTER AT SULPIZIO	27. WILLOWS MANSION /COTTAGE/PARK
8. FIFTH WARD PARK	18. RADNOR MEMORIAL PARK	28. RADNOR TRAIL
9. FRIENDS OF RADNOR TRAIL PARK	19. RADNOR NATURE PARK	29. ARDROSSAN
10. HARFORD PARK	20. RADNOR SKATE PARK	

RADNOR TOWNSHIP STAFF

Robert A. Zienkowski, Township Manager/Secretary

Tammy Cohen, Director of Recreation & Community Programming

Steve McNelis, Director of Public Works

Heather DiCanzio, Recreation Program Supervisor

Tracey Hardos, Recreation Program Coordinator

Address: 301 Iven Avenue, Wayne, PA 19087

Office Hours: Monday - Friday 8:00 AM to 4:00 PM

Phone: 610-688-5600

Website: www.radnor.com

If you would like to receive e-mail announcements on news related to parks and recreation services, please send an e-mail to: recreation@radnor.org.

PARKS AND FACILITY INFORMATION

PERMITTED USAGE:

Looking to use a park or facility for your family gathering or group outing? Please contact us at 610-688-5600 to learn more about availability and usage. Fees apply for permitted group usage of our parks and facility areas and vary by location. Applications are required.

REPORTING ISSUES OR DAMAGES:

Please report any issues or damages you notice in our Township parks or facilities by calling 610-688-5600.

PARK BATHROOM FACILITY CODES

All park bathroom entry codes are 1-2-3 EXCEPT Clem Macrone Park which is 1-2-3-#. Please note that park bathrooms are winterized in November and are closed through the winter.

RADNOR TOWNSHIP PARKS AND RECREATION BOARD

The Parks & Recreation Board makes recommendations to the Board of Commissioners on matters of parks, recreation, and open space development in the Township. The Board consists of seven members serving five year terms, plus two representatives of the Radnor Township School District Board of Directors. The Parks & Recreation Board meets on the second Thursday of each month at 6:30 PM at the Radnor Township Building, unless otherwise noted. There is no meeting in August. The public is invited to all meetings.

***Some of the historical information contained in this document may not be accurate. Furthermore, park development and amenities are subject to change over time.**



ARDROSSAN

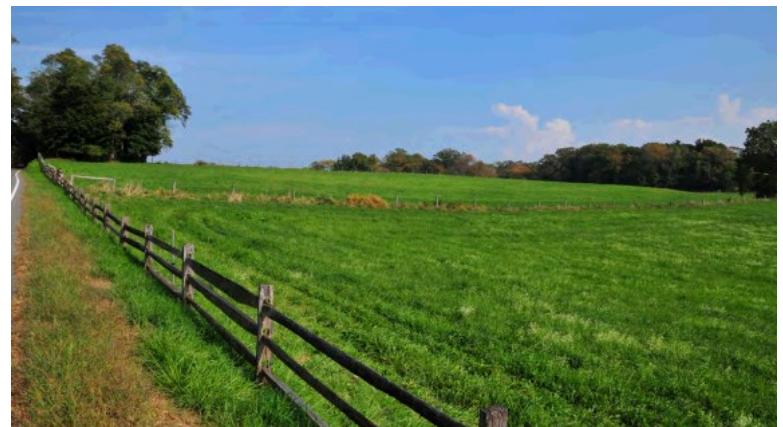
Darby-Paoli Road & Newtown Road, Villanova • Acres: 71 • Ward: 4

HISTORY

In 2006, the voters of Radnor Township approved a referendum authorizing the Township to sell bonds for the purchase of open space and the maintenance of recreational facilities. In 2013, Radnor Township officially purchased 71 acres of open space in preservation of portions of land that comprised the Ardrossan estate. Three specific areas were acquired - the Wheeler Field, consisting of 27.65 acres west of Darby-Paoli Road and south of Saw Mill Road; the Quarry Tract, consisting of 16.33 acres to the west of Darby-Paoli Road at the intersection of Darby-Paoli and Newtown Road; and the Rye Field, consisting of 27.04 acres to the east of Darby-Paoli Road at the intersection of Darby-Paoli and Newtown Road. These areas are in part contiguous to the Willows, Skunk Hollow, and Saw Mill Parks, therefore preserving 216 total acres of scenic open space land that stretches along a heavily traveled artery of the Township. Not only has the purchase of the Ardrossan lands allowed for a vast expansion to the Township's park system, it also provides an opportunity for environmental protection, promotion of stormwater management through natural infiltration, and conservation of the Darby Creek and Darby Creek Greenway.

FEATURES & AMENITIES

Intended, future use of the Ardrossan parcels include perimeter walking trails, bicycle/running trail along the length of the west side of Darby-Paoli Road. Agricultural use is slated to continue as the space is preserved as open space.



BISHOP RICHARD ALLEN PARK

227 Brook Street, Bryn Mawr • Acres: 0.2 • Ward: 5

HISTORY

Originally named Brook Street Park, Bishop Richard Allen Park was purchased by Radnor Township in 2006 with funds from the Open Space Fund. The park replaced the site of a business. After the building was torn down and the park was developed, it opened to the delight of residents in November of 2007. The site was renamed Bishop Richard Allen Park in April 2009 to recognize the founder of the African Methodist Episcopal Church and his connection to the community. This quaint park is well known and enjoyed by the residents of the surrounding Five Points neighborhood.



FEATURES & AMENITIES

This small pocket park, located at the end of Brook Street, has a half-court basketball court and swing set. Benches provide a place to sit and enjoy the beautiful plants and shrubbery surrounding the park. The site was made ADA accessible with the addition of a ramp on Bryn Mawr Avenue that leads down to Brook Street alongside of Bishop Richard Allen Park.



- Basketball Court
- Playground
- Parking

WILLOWS MANSION, COTTAGE, & PARK

490 Darby - Paoli Road, Villanova • Acres: 47.5 • Ward: 6

HISTORY

Willows Park is a 47.5-acre estate purchased by Radnor Township in 1973 from the Zantzing family. Situated at the end of a long, winding driveway is the beautifully restored three-story mansion. The mansion was built in 1910 for John Sinnott Jr., for his wife, and referred to as *Rose Garland*. The mansion and 47.5 acres that now make up the park were purchased by Clarence Geist in 1937 as a wedding present for his daughter. The estate was then called *Maral Brook*, which was a combination of their first names, Mary and her husband, Alfred Zantzing. The site was renamed *The Willows* because of the beautiful willow trees that surround the property. The mansion still contains many of the original architectural features that add to the historical value of the property. The Cottage, formerly referred to as the carriage/gate house and stable, was a multipurpose building. It housed estate employees, stabled horses and other animals of the estate, housed cars, and was the first point of contact visitors made to the estate. It housed the many species of livestock that lived on the property during the Zantzing's from the 1930's to the 1960's.



FEATURES & AMENITIES

An ideal setting for weddings, private parties, and other special events, such as recreation programs, the Willows Mansion, Cottage, and Park have added a different layer to the offerings of Radnor Township for over 35 years. The property is an irresistible combination of quiet elegance within the mansion and unsurpassed beauty of the landscaped grounds surrounding it. Features include a picturesque pond with flowing fountains, sweeping panoramas of stately trees, and flowering plants. The grounds are great for a hike, lunch in the picnic area, or just to sit on a bench and take in the scenery.



- Historic Estate
- Pond/Stream
- Fishing
- Picnic Area/Grills
- Nature Trail
- Portable Bathrooms
- Parking

WEST WAYNE PRESERVE

South Devon Avenue & Conestoga Road, Wayne • Acres: 6.4 • Ward: 6

HISTORY

Radnor Township acquired West Wayne Preserve in 1996 for use as a stormwater management area and nature-related recreational exploration area. Located at the corner of South Devon Avenue and Conestoga Road, this heavily wooded open space was once overgrown weeds, vines, and trash. In 1997, the area underwent a major clean up to transform it into a passive open space recreation area. Abutting the Radnor Trail, the site is viewed every day by users of the trail as well as the residents of the surrounding West Wayne neighborhood. To date, no further development of the site has occurred.



FEATURES & AMENITIES

West Wayne Preserve is an undeveloped woodland nature area with the purpose of protecting the open space of Radnor Township. The 6.4 acre wooded area is home to trees, bushes, and other natural flora indigenous to the area. The area is a great place to explore for those that love being outdoors and enjoying all the natural landscape has to offer.



- Wooded/Environmental Area

BO CONNOR PARK

590 South Devon Avenue, Wayne • Acres: 6.8 • Ward: 6

HISTORY

Originally called South Devon Park because of its location along South Devon Avenue, the land that now makes up Bo Connor Park started to take shape in 1953 when Radnor School District purchased 6.8 acres from Wayne Terrace for park space. During the 1960's additional land was purchased for a total of 17 acres (adjacent Warren Filipone Park). The park space was purchased by the Township in 1965. Today the land is divided between two parks, Bo Connor and neighboring Warren Filipone. In April 2010, the park was renamed to honor Bo Connor for his support of youth and adult recreation programs in Radnor Township. Connor was involved in area youth sports for decades and the impact he had on residents of the Township can still be felt today. To recognize the contribution and commitment he made to countless recreation programs as a coach and mentor, it was befitting to honor him with this namesake park in the neighborhood in which he was a resident.



FEATURES & AMENITIES

Bo Connor Park is a neighborhood park located along South Devon Avenue. The Little Darby Creek separates Bo Connor from Warren Filipone Park. Bo Connor features a full size basketball court, two baseball/softball fields with bleachers, a multi-purpose athletic field, playground and restrooms. The park also features a picnic area that is available to rent for small gatherings and parties. The park is a valuable part of community life for the surrounding neighborhoods.



- Athletic Field
- Ball Fields (2)
- Basketball Court
- Playground
- Stream
- Bathroom Facility Code Access 1-2-3
- Water Fountain
- Parking located at adjacent Filipone Park

CLEM MACRONE PARK

810 Conestoga Road, Bryn Mawr • Acres: 9.4 • Ward: 7

HISTORY

The land for Clem Macrone Park was purchased in 1958 for inclusion in the Township's park system. Construction of the original amenities was completed in 1968. First referred to as Rosemont Park, Clem Macrone Park was dedicated in 1991 to honor Clem Macrone, an active woman in the political community whose property abutted the park and who would allow neighborhood children to access the park through her backyard. Macrone's home bordered the park and she would often host community picnics in the park. She loved the community and children who used the park and the renaming was a way to honor her contribution to the community. Clem Macrone Park is well known for hosting the Garrett Hill 4th of July Parade and Picnic that is held annually at the park. A community-based master plan process began in 2014 to evaluate a new layout of the park and in 2017, a comprehensive project took shape to renovate and redesign the park.



FEATURES & AMENITIES

Located off of Conestoga Road in Garrett Hill, the park features an array of amenities suitable for both active and passive recreation. This includes a wide-range of pursuits including tennis (courts are also lined for pickleball), basketball, baseball, soccer, family gatherings, picnicking, and nature walks. The park features an 8,000 square foot playground, a large pavilion and picnic area with charcoal grills nestled in a beautiful nature area near the wooded stream at the back of the park. In 2004, a naturally wet area of the park was converted into a community wetlands habitat. The wetlands features natural plantings, native grasses, and sapling trees, available for all to enjoy the natural beauty of the area. Educational signage identifies plant species and informs park visitors about the value of the wetlands to the ecosystem. A war memorial dawns the site's entrance to celebrate fallen heroes from the Korean War and World War II. Additional homage is paid with a plaque to Garrett Hill Native, Janice Grant Berenstain (co-author/creator of the Berenstain Bears).



- Ball Field
- Basketball Court
- Tennis Courts/Pickleball (2)
- Playground
- Pavilion/Picnic Area/Grills
- Walking Path (0.4 mi.)
- Stream/Boardwalk
- Bandshell
- Bathroom Facility Code Access 1-2-3-#
- Parking

WARREN FILIPONE PARK

400 South Devon Avenue, Wayne • Acres: 10.2 • Ward: 6

HISTORY

Warren Filipone Park shares much of its history with its neighbor, Bo Connor Park. Once regarded as 'a park within a park', the 10.2 acres of Filipone were a part of the original 17 acres purchased by Radnor School District in the 1950's and 60's. The Township purchased the land in 1965. Today, the area is delineated by Little Darby Creek to create two distinct parks. In May of 1976, the park was named for Warren G. Filipone, a former Parks Supervisor for the Township. The dedication was a way to honor Filipone for his devotion to the Township's parks and the recreation life of the community.



FEATURES & AMENITIES

Warren Filipone Park is a 10.2 acre park located next to Bo Connor Park along South Devon Avenue. With a flat, open layout, the park is home to three tennis courts, two baseball/softball fields, a multipurpose athletic field, and restrooms. Off-street parking is available and is special needs accessible. Due to its location and abundance of recreational amenities, it is no wonder why Filipone Park is a key location for programs for both the Recreation Department and various Township-related sports organizations.



- Athletic Field
- Ball Fields (2)
- Tennis Courts (3)
- Stream
- Bathroom Facility Code Access 1-2-3
- Water Fountain
- Parking

UNKEFER PARK

1400 East County Line Road, Bryn Mawr • Acres: 1.5 • Ward: 7

HISTORY

Unkefer Park is a 1.5 acre parcel that serves as the gateway to Radnor Township as you travel west from Lower Merion Township along Lancaster Avenue and is located next to Airdale Road. The piece of open space was purchased in 1968 with Project 70 grant funds and the total cost of the land was a meager \$26,000. The park is located near Austin Memorial Park of Lower Merion Township. The Park was named after Ralph T. Unkefer, former member of the Radnor Township Parks and Recreation Board who died in 1967.



FEATURES & AMENITIES

Unkefer Park is a small area of open space located at the corner of Lancaster Avenue and Airdale Road and has no active recreational amenities. Unkefer is a passive park that features a short paved walking path, wooden benches, trees and landscaping, and a Stone-henge-like rock that was donated by PennDot in 1990 when the Blue Route (I-476) was constructed - the project was part of Radnor's gateway enhancement strategy.



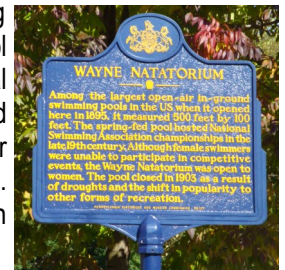
- Walking Path

COWAN PARK

201 Radnor Street Road, Wayne • Acres: 3 • Ward: 1

HISTORY

Cowan Park has the distinction of being one of the first parks in the Radnor Township park system being in existence since the early 1950's. The park earns its namesake from Leslie Cowan, a Radnor resident who was killed in action in 1945 while fighting during World War II. In the 19th century, before becoming a Township park, Cowan Park was in close proximity to the site of the Wayne Natatorium. The Wayne Natatorium was one of the largest spring fed, open-air, in-ground swimming pools in the United States created by the damming of Gulph Creek, which runs through Cowan Park. The pool measured 500 feet by 100 feet and hosted multiple National Swimming Association Championships. The natatorium closed in 1903 as a result of a drought, which affected the pool's water supply. After closing, the pool was emptied and back filled. Today, a historical marker is located on the grounds of Cowan Park to remember the significance of the natatorium.



FEATURES & AMENITIES



Cowan Park is a quiet park nestled into the neighborhood along Radnor Street Road near Willow Avenue. Cowan's main amenities include the playground, basketball court, and baseball diamond. There is a picnic table and seating area near the playground that is available to reserve for small gatherings. Cowan Park also has a bathroom facility and off street parking is available in the lot across the street from the park. Gulph Creek borders the southeastern edge of the park near the basketball court and playground. To help in the reduction of stormwater runoff, a rain garden was added next to the bathroom facility in 2013 by the Friends of Cowan Park.

- Ball Field
- Basketball Court
- Playground
- Stream
- Bathroom Facility Code Access 1-2-3
- Parking

EMLLEN TUNNELL PARK

57 Garrett Avenue, Bryn Mawr • Acres: 5 • Ward: 7

HISTORY

Emlen Tunnell Park is owned by Radnor Township School District (it is operated under a lease to Radnor Township) and was formerly known as Converse Field. The land that is now the park was part of Chetwynd, the John H. Converse estate. When the estate was sold, Radnor School District purchased a corner of the lot for use as playing fields, for Rosemont Elementary School, located across the railroad tracks. The park was dedicated and renamed to honor the legendary Emlen Tunnell who was the first African American to be enshrined into the Pro Football Hall of Fame in 1967. Tunnell played for the New York Giants and the Green Bay Packers in the NFL through 1962. He was a Garrett Hill native and graduated from Radnor High School in 1942. Tunnell also served in the US Coast Guard during World War II and received coveted honors for saving the lives of two shipmates. Tunnell serves as a great inspiration and is remembered for not only being a fine athlete, but a remarkable US Veteran. In 2003, the Walker Tract, a .37 acre piece of land next to the park, was purchased by the Township to further develop and expand the park for parking and access.



FEATURES & AMENITIES



One of the homes of the Radnor Wayne Little League, Emlen Tunnell Park is located off of Garrett Avenue and Route 30. The park features two baseball/softball fields complete with dugouts and bleachers. A 1/4 mile walking trail surrounds the two fields making the park a great place to exercise and enjoy a ball game. The park also features a rectangular multipurpose field and small play area. Dogs are permitted in the park on leash, but only during certain times of the day. In 2005, a small playground was constructed and more parking was added to accommodate the many visitors during the busy baseball and softball seasons.



- Athletic Field
- Ball Fields (2)
- Walking Path (0.25 mi.)
- Playground
- Dogs Permitted
- Parking

VETERANS PARK (FORMERLY KNOWN AS ST. DAVIDS COMMUNITY PARK)

436 East Lancaster Ave, Wayne • Acres: 1.9 • Ward: 3

HISTORY

In July of 1999, Radnor Township purchased this 1.9 acre property along Lancaster Avenue, commonly referred to as the George W. Huggler Property, for the development of a community park. Formerly, the park was the site of the residence and veterinary practice of Huggler for over 50 years. Opened to the public in October 2001, this scenic setting is the ideal location for a community park. A small playground area was installed in 2007 adding a new layer to the park for residents to enjoy. On September 11th, 2011, a memorial marker was installed at the park and dedicated in honor of the 10th Anniversary of the 9/11 terrorist attacks. In September 2013, the park was renamed Veterans Park to honor those who served in the United States Armed Forces and a planning project to bring to life the vision of the park's namesake is underway.



FEATURES & AMENITIES

The main focal point of the park is a gold leaf fountain complete with Radnor Township's seal. The park beautifully incorporates landscape materials, including a meandering trellis, berms, and shrubbery to create a safe and intimate park, even though it is situated along a main thoroughfare. The site is complete with benches, game tables, walking path, playground, and a natural amphitheater. This beautiful, serene park offers the perfect setting for relaxing, reading a book, or just taking a stroll along the winding path.



- Playground
- Water Fountain
- Walking Path

SKUNK HOLLOW PARK

600 Darby - Paoli Road, Villanova • Acres: 93.7 • Ward: 6

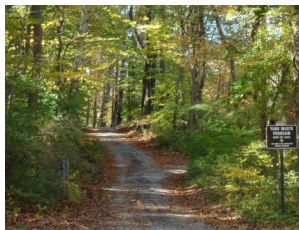
HISTORY

Purchased by the Township through state and federal grants in the 1970's, Skunk Hollow was once referred to as the Montgomery Tract. The Darby Creek Association, which was founded in Radnor, made a push for the Township to acquire the land in order to conserve the natural open space. Skunk Hollow was once the scene of thriving industrial mill sites and dams.



FEATURES & AMENITIES

Skunk Hollow is 93.7 acres of undeveloped land located between the Willows and Saw Mill Park along Darby-Paoli Road. One can enter either through Skunk Hollow or trails leading from Saw Mill Park and the Willows. The trails in Skunk Hollow are part of the Southern Section of the Radnor Hiking Trail System. A portion of the Little Darby Creek runs through the park and fishing is permitted for all ages. A fenced in and very popular community garden operated by the Skunk Hollow Community Garden Association is located in the northwestern portion of the park.



- Stream
- Fishing
- Nature Trail
- Dogs Permitted
- Parking at the Willows Park

ENCKE PARK

305 Iven Avenue, Wayne • Acres: 10.7 • Ward: 3

HISTORY

In the mid-1940's, Encke Park was the site of the Radnor Township Sewage Plant. When the plant was phased out, the land was filled in and made a park site. The Township purchased the land in 1965. Formerly called Iven Field, the park was renamed to honor Ethel G. Encke in 1974. Encke was the founder of the Radnor Recreation Department and ran the department before there was a formal director. She retired in 1972 after serving the Radnor Township School District for 44 years as a physical education teacher and coach. The 10.7 acre parcel of Encke Park also comprises the Township Building and Radnor Skate Park.



FEATURES & AMENITIES

Off of Iven Avenue, Encke Park is adjacent to both the Radnor Township Municipal Building and Cappelli Driving Range. Ithan Valley Creek, which runs to the south of the park, separates it from the parking area and the Radnor Skate Park. A stone pedestrian bridge crosses over the creek and leads to the parking area. Encke Park is a natural wooded area that balances well maintained grass playing fields with natural shrubs and bushes. The picnic tables and benches are a great place to stop and relax to enjoy the view of the park. The two baseball fields and a playground help to facilitate active recreation. The baseball fields feature dugouts, bleachers, and outfield fences.



- Ball Fields (2)
- Playground
- Stream
- Playground
- Water Fountain
- Bathroom/Concession Facility Code Access 1-2-3
- Parking at Township Building

FENIMORE WOODS

1194 Eagle Road, Wayne • Acres: 11.5 • Ward: 2

HISTORY

This park takes its name from the estate of Francis Fenimore, one of the largest landowners of Wayne's early days. Fenimore was the original owner of a property that totaled in excess of 100 acres, which included the area that presently makes up the park, Eastern University, and many parts of St. Davids. He called his estate *Edgewood Lake*, named for the pond at today's Fenimore Woods. Fenimore's land was eventually subdivided. Valley Forge Military Academy purchased the land that is Fenimore Woods to use for their summer camp, but when they built an indoor pool and no longer needed the pond for swimming, the Township acquired the 11.5 acre tract of land in 1973 at the urging of the North Wayne Protective Association to protect it from a development of condominiums. It featured a main house (circa 1910/that was eventually razed) and a stone stable known as *Wildwoods*, that both were parts of the original estate - the stable still remains today. The land was thought to be well-suited for open space due to its unique character, natural foliage, open land, pond, and stream. A covered picnic pavilion was added to give large groups a place to gather and hold events. In 2004, a large playground was installed near the picnic pavilion making Fenimore Woods an ideal gathering spot for Township residents.

FEATURES & AMENITIES



Located at Eagle Road and Paul Road, near Cabrini College and Eastern University, Fenimore Woods includes a covered pavilion for large gatherings and a playground. The picnic area includes a covered pavilion with a seating capacity for 25 to 150 people and restroom facilities (available for rentals only) in the stable building located near the parking area. A large portion of the park is woods and undeveloped land, with three streams, a pond, and marshland. The 3 acre pond, surrounded by benches, provides excellent fishing. Fenimore Woods' acres of land offer a great setting for hiking and exploring. This natural wooded area is a wonderful place to escape for a great time outdoors.

- Picnic Area/Pavilion/Grills
- Playground
- Pond/Stream
- Fishing
- Walking Path
- Portable Bathrooms
- Water Fountain
- Parking

SAW MILL PARK

666 Earles Lane, Newtown Square • Acres: 4.2 • Ward: 4

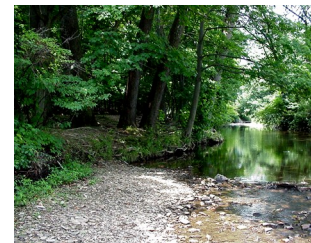
HISTORY

The area that surrounds and makes up Saw Mill Park is considered to be one of Radnor's first settlements. As early as the late 17th century the area was very active with mills fed by Darby Creek. Among the types of mills include a grist mill and a saw mill constructed in the 1800's by Levi Lewis. A house located on Earles Lane, built in 1840 was home to the miller. Today, much of Lewis' original land is now part of Ardrossan. Saw Mill Park is a great place to visit and imagine what life was like more than 200 years ago when the spot was Radnor's industrial center. Saw Mill Park is known for hosting the Youth Trout Derby that takes place annually for the community.



FEATURES & AMENITIES

Saw Mill Park is a 4.2 acre linear park located along a stretch of the Little Darby Creek at Darby-Paoli Road and Saw Mill Road. Fishing is permitted for all ages along Little Darby Creek. Nature trails are accessible for those individuals with special needs. The park also features picnic tables, a bridge, and walkways allow hikers to navigate through to neighboring Skunk Hollow and onto the Willows. Parking is available off road along Saw Mill Road and Earles Lane.



- Stream
- Fishing
- Nature Trail
- Picnic Area
- Dogs Permitted
- Parking

RADNOR SKATE PARK

301 Iven Avenue, Wayne • 130' x 80' • Ward: 3

HISTORY

With the rise in popularity of extreme sports, a Skate Park Committee was formed to decide the feasibility of constructing a community skate park where residents would have the opportunity to enjoy their sport in a safe environment. After discussing many possible locations within the Township, the site of the Township Building along Iven Avenue, near Encke Park, was decided. Radnor Skate Park was unveiled in October of 2004. This cutting-edge facility is an outdoor park with appropriate structures for skateboarding, aggressive in-line skating, and BMX freestyle biking. It is located in front of the Radnor Township Building next to the lower parking lot.



FEATURES & AMENITIES

The Skate Park consists of a number of obstacles suited for enthusiasts to pursue the recreational activities of skateboarding, aggressive in-line skating, and BMX freestyle biking. The structures are manufactured by Skatewave Modular Skatepark Systems and are fitting for the outdoor setting. Radnor Skate Park spans 130' x 80' with an array of both novice and advanced obstacles. The includes several ramps and street elements such as grind boxes, fly box, and a grindable picnic table. In 2015, significant upgrades were made to the facility that included the addition of a pyramid with a hubba ledge, manual pad, 3' x 16' quarter pipe, an expanded footprint, and a water fountain.



- Two-Sided Large Fly Box with stair rail, hubba ledges, hip ramp
- 2' Three-Sided Pyramid with hubba ledge
- 3' x 16' Quarter Pipe Ram
- Street Ledges, Manual Pad, Kicker
- Grindable Picnic Table
- Water Fountain
- Parking

FIFTH WARD PARK

725 Bryn Mawr Avenue, Newtown Square • Acres: 10.95 • Ward: 5

HISTORY

Fifth Ward Park is a 10.95 acre parcel of open space and wetlands was granted to Radnor Township by Dennis Bruce, the developer who built several homes connecting to this property in the 1989. This land is currently not developed or utilized for any type of activity. It is entirely a wooded parcel and the Darby Creek traverses the western portion.



FEATURES & AMENITIES

Fifth Ward Park is an open space area and natural woodland located along Bryn Mawr Avenue. Darby Creek borders the southwest boundary of the park which consists largely of wet woodlands. Fifth Ward Park serves as a wooded area preserving the natural landscape and open space of Radnor Township. An undeveloped walking trail snakes through the wooded area for those that enjoy exploring the outdoors.



- Wooded Area
- Stream

FRIENDS OF RADNOR TRAIL PARK

304 Liberty Lane, Wayne • Acres: 3.1 • Ward: 6

HISTORY



The Friends of Radnor Trail Park is one of the newest additions to the Township's list of developed parks. The park was formerly known as D'Antonio Tract, an area of land the Township purchased from the D'Antonio family in 2002 for use as an open recreational area. Friends of Radnor Trail Park was developed and formally opened in May 2009. Situated along the Radnor Trail, the park is a ideal location to stop and take a break when walking or riding along the trail and adds to the sites community members witness as they use the trail.



FEATURES & AMENITIES

Nestled between West Wayne Avenue and the Radnor Trail, Friends of Radnor Trail Park is an open air park tucked away from the surrounding residential neighborhood. The park features a large, grassy play area, restrooms, and a picnic area that is available to reserve for small gatherings. A paved walking path connects the park to both South Devon and West Wayne Avenues. An off-street parking lot and ADA accessible ramp help to make this park a convenient access point to the Radnor Trail.



- Access to the Radnor Trail
- Picnic Area
- Walking Path
- Bathroom Facility Code Access 1-2-3
- Dogs Permitted
- Parking

RADNOR NATURE PARK

20 Matsonford Road, Wayne • Acres: 2.8 • Ward: 2

HISTORY

Originally known as the Petersen Tract, Radnor Nature Park was acquired by the Township and opened in 2002 after development from open space into a pristine environmental area. The nature park is located off Matsonford Road and nestled between Radnor Elementary School and Harford Park. The proximity of the park to nearby Radnor Elementary allows for the park to serve as a learning tool and asset to the students for years to come. Not only do the well-manicured natural surroundings act as an outdoor laboratory for science exploration, the open space also sparks the creative juices offering a quiet, natural space.



FEATURES & AMENITIES

This 2.8 acre park has an environmental area and nature trails that make for the perfect setting to witness to the beautiful natural landscape the park has to offer. There is a formal English garden with plenty of benches to sit and observe the surroundings. The park connects to Radnor Elementary School's playground where a parking lot is available. Radnor Nature Park is a great place to escape and reconnect with the great outdoors.



- Environmental Area
- Nature Trail
- Parking

RADNOR TRAILS - SOUTHERN SECTION

Length: 5 Miles

HISTORY

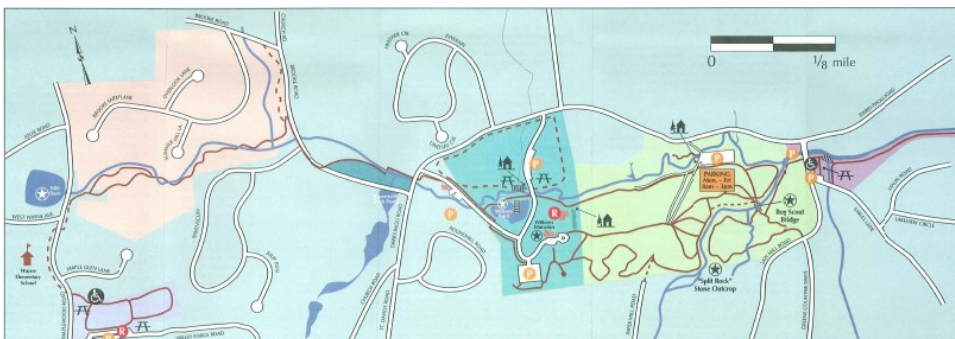


During the 18th and 19th centuries numerous mills, a tannery, and other commercial operations were located along the banks of the Darby and Little Darby creeks in the corridor now occupied by the Radnor Township Hiking Trails. The remains of these enterprises along with a number of houses, barns, and outbuildings can be found along the trails. Many

of the trails follow paths that were already well established by area wildlife, Native Americans, and some of the Township's earliest industrialists. Work on the Radnor Hiking Trails began in 1996 and continues today. The trails were created by the Township in partnership with a number of local volunteer organizations, including the Friends of Radnor Trails, multiple Boy Scout troops, and various church groups. These organizations designed many of the trails, cleared vegetation, removed fallen limbs and other debris, and blazed trees.

FEATURES & AMENITIES

The Radnor Hiking Trails are part of a network of hiking paths that lead through some of the most scenic woodlands, peaceful meadows, and historically significant areas in the Township. The southern section of the trail network extends from the intersection of West Wayne Avenue and Maplewood Road near Wayne Elementary School to Saw Mill Park. There are six interconnected trail systems that comprise the southern portion of the trail network. Each of these trail systems has its own special characteristics and distinctive features. They are: Dittmar Park Walking Track, Brooke Farm Trails, Inverary Trail, Willows Trail, Skunk Hollow Trail, and Saw Mill Trail. The surrounding woods are populated by beeches, tulip trees, sycamores, oaks, and maples. The shade created by these trees and the moist conditions from the creek provide an ideal setting for wildflowers to grow. The woods, meadows, and ponds along the trails provide habitats for a variety of wildlife including deer, foxes, and skunks. The trail network is also a popular venue for bird-watching. The total distance covered by all the trails in the network is approximately 5 miles.



HARFORD PARK

260 Gulph Creek Road, Wayne • Acres: 30.8 • Ward: 2

HISTORY

Harford Park is the site of Harford Mansion. The building was completed in 1880 and was designed by Frank Furness & Allen Evans, Philadelphia's best known architects of the period. The mansion stands as one of the best intact examples of their residential architecture. It was built as a summer home for Judge John Hare on a site with great views of Radnor Valley. The Hare Estate was purchased by the Township in 1969, funded partially by federal grants. The house was leased to Main Line School Night in 1970 and is now called the Creutzburg Center, named after one of the founding members of Main Line School Night. The park was renamed from Hare Park to Harford Park in 1974. In 1997, the park was designated as a dog park. The rolling hills and open grassy area make the park an ideal place for dogs to exercise.



FEATURES & AMENITIES

Harford Park is a 30.8 acre park located off of Gulph Creek Road in Radnor. With tall trees and acres of hills covered with green grass, this park is a great place for dogs to run off their leash. Features include a walking trail and multiple picnic tables.



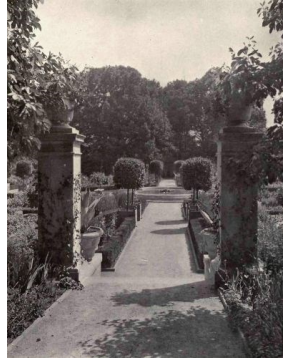
- Dogs Permitted
- Nature Trail
- Parking

ITHAN VALLEY PARK

642 South Ithan Avenue, Bryn Mawr • Acres: 20.5 • Ward: 5

HISTORY

Once known as the Grow Tract, Ithan Valley Park was part of an old estate owned by John Evans that was donated to the Township for use as a park when the Blue Route was constructed in 1973. In the 18th & 19th centuries, a family mill and farm was run on the land. Remnants of an old mill are located near the parking area. The site was transformed in the 1900's into a grand estate known as Timberline. Both the owners of the mill and estate were keenly interested in botany and collected trees from both North America and the Old World. The Ithan Valley Tree Identification Committee was formed to identify which trees were either old enough to have been part of the original collection or seedlings of those trees. There are 22 species identified and are roughly located going up the old driveway from what is now the parking area. They include White Oak, Fir, Tulip, Sugar Maple, Magnolia, Buckeye, False Cypress, Cork, and the very rare Zelkova tree located just off the gravel parking lot. In the mid 1800's, prior to being turned into an estate, Ithan Valley Park was regarded as one of the most significant botanical sites in the United States. In 2011, the Friends of Ithan Valley Park was formed to celebrate the history of the park and begin a preservation effort. The Friends have been working on various projects to enhance the park and call attention to its heritage as an arboretum and its historical trees.



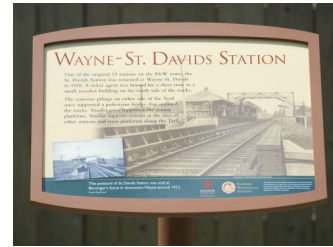
FEATURES & AMENITIES

Located off South Ithan Avenue, Ithan Valley Park contains a hiking trail and a nature area. The Ithan Creek runs through the length of the park and fishing is permitted for all ages. The park is also one of the pick up sites for free leaf compost mulch that is provided by Radnor Township. With stately trees and natural shrubbery, Ithan Valley Park is a great place to hike, fish, or simply enjoy being outdoors.



- Nature Trail
- Wooded Area
- Fishing
- Stream
- Dogs Permitted
- Parking

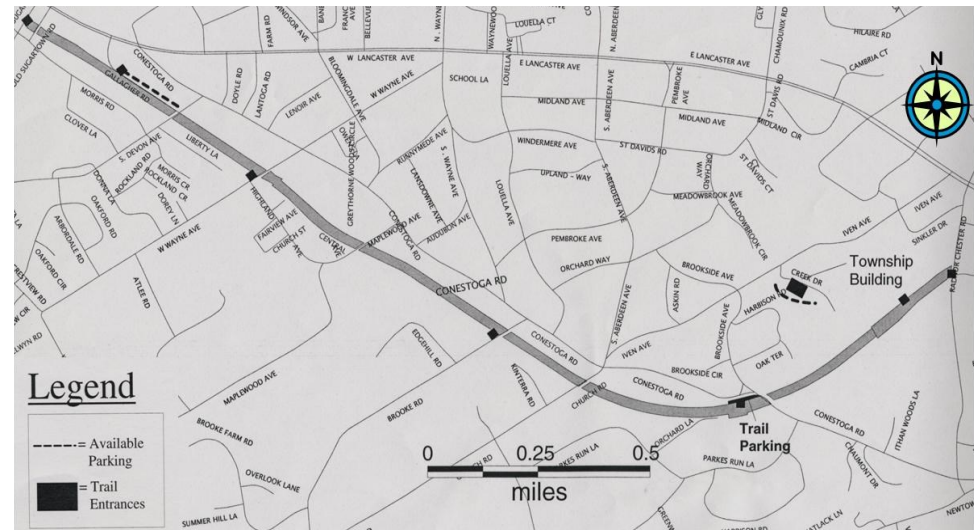
HISTORICAL SIGNAGE



Several interpretive signs along the Radnor Trail mark the spots of former P&W train stations and tell the history of the old railroad. These signs are part of a long-term project to create interpretive panels commemorating all of the stations that once stood along the trail spearheaded by the Radnor Historical Society and Radnor Conservancy. Most people who run,



bike, and walk on the Radnor Trail don't realize that electric trolleys, part of a railroad leading to the 69th Street Terminal, once followed the same path. The concrete supports of the once elevated stations are still found along the trail and an amazingly intact substation building are all that is left of what once was the "Strafford Branch" of the Philadelphia and Western Railway. The Railway was an important part of life in Wayne and Radnor for fifty years. After the trains stopped running, it sat vacant for almost as much time. Now that the right-of-way is in active use once again, it's only appropriate that the story of the P&W be told to the Trail's new generation of travelers. The signs have been placed in important locations, including sites of former railroad stations. The first two signs were funded by a grant from the Pennsylvania Department of Community and Economic Development, as well as donations from the Radnor Historical Society, the Friends of Radnor Trails, and Radnor Township. The second phase was made possible mostly by personal donations.



RADNOR MULTIPURPOSE TRAIL

520 Conestoga Road, Wayne • Length: 2.4 Miles

HISTORY



A major development in Radnor's recreational amenities is the Radnor Multipurpose Trail. Also known as the P&W trail, it runs along what was once part of the Philadelphia & Western Railway Company track that was first used in 1907. P&W maintained the line until 1956, when it was abandoned and PennDOT acquired the land. In 1976, PennDOT granted Radnor use of the land as a bike and hiking path. A referendum in 1995 discovered a majority of residents would be in favor of developing the abandoned corridor into a multipurpose trail. PennDOT received over \$2 million to develop the trail. Construction began in June of 2004 and was completed in late 2005. Officially opened to residents on April 16, 2006, the Radnor Trail has provided the community with a safe location to perform some of their favorite outdoor recreational activities. Utilized year round, the trail has been a welcomed addition to the list of highly valued recreational facilities of Radnor Township. Please refer to the Trail's list of user recommendations on etiquette and responsibility.

FEATURES & AMENITIES

The 2.4 mile trail runs from Radnor-Chester Road to Sugartown Road. With several key connections located along the part-macadam, part-crushed stone trail surface, multiple uses include walking, jogging, hiking, biking, and rollerblading. Entrances along the length of the trail include Sugartown Road, Gallagher Road, West Wayne Avenue (Friends of Radnor Trails Park), Brooke Road, Conestoga Road, John Cappelli Golf Range, and Radnor Chester Road. A parking lot with a portable bathroom is available at the Conestoga Road entrance to the trail and along Brooke Road. Dog walking is permitted on the trail and all dogs must be on a leash.

- Walking Path 2.4 miles
- Portable Bathrooms at Conestoga Parking Lot Trail Entrance
- Dogs Permitted
- Parking



JAMES C. DITTMAR PARK

831 South Valley Forge Road, Devon • Acres: 15.8 • Ward: 6

HISTORY



In 1995, Radnor Township purchased 15.8 acres known as the Forbes Tract through the Open Space Fund. The site was developed into multipurpose athletic fields for use by various sports programs. In May 1999, the park was named for Radnor Township's first Director of the Parks & Recreation Department, who served the Township for over 17 years. Dittmar was instrumental in establishing and strengthening the sports programs of Radnor, who continue to make use of the playing fields on this site.

FEATURES & AMENITIES

Dittmar Park is located off of Valley Forge Road between Maple Road and Church Road. The park has two multipurpose athletic fields, along with a waterless environmentally friendly restroom facility, and water fountain. The site includes a 1/2 mile walking path, which loops around the fields along with a path to nearby Wayne Elementary School. The park is complete with picnic tables and a seating area.



- Athletic Fields
- Walking Path (0.5 mi.)
- Bathroom Facility Code Access 1-2-3
- Water Fountain
- Parking

JOHN L. CAPPELLI MEMORIAL DRIVING RANGE

300 Iven Avenue, Wayne • Acres: 22.5 • Ward: 3

HISTORY

The part wooded/part open space area that currently makes up the John Cappelli Memorial Driving Range was originally part of the St. David's Golf Club that operated on the land now occupied by the Radnor Financial Center, Radnor Hotel, St. David's Square Shopping Center and more, bisected by Lancaster Avenue. The golf club moved in the 1920's and the land was developed in the 1950's and 60's. A small part of the original golf course was purchased by the Township and remains for use as a driving range. In January of 1994, the land was dedicated in the honor of John Cappelli, a former commissioner that represented the 6th Ward for many years in the 1970's. Cappelli was an avid golfer and the Parks & Recreation Board felt it was appropriate to honor him in this way.



FEATURES & AMENITIES



Cappelli Golf Range is a 22.5 acre driving range located next to Encke Park off of Iven Avenue. The large open green makes the site ideal for practicing your swing. The driving range is restricted to Radnor Township residents only. Please note that no wood shots are permitted and there is no hitting off of the green. Golf at your own risk and bring your own balls and clubs. This park also features an access ramp to the Radnor Trail near the Radnor -Chester Road entrance. Off-street parking is available along Iven Avenue.

- Golf Driving Range
- Wooded Area
- Parking

RADNOR MEMORIAL PARK

61 Matsonford Road, Wayne • Acres: 13.75 • Ward: 2

HISTORY



A large part of Radnor Memorial Park was granted to the Township by the Sun Corporation in the early 2000's. Another part of the site was conveyed as part of a tri-party agreement associated with what is now Radnor Elementary School. This part was used by Sun Corporation as a helicopter landing pad. The land was converted into a multipurpose playing field that opened in 2002. Ever since, the park has been a key site for a

number of recreational activities. The park was named as a way to memorialize players, coaches, and administrators of youth athletic programs in Radnor Township who died while still active participants in youth sports. In 2012, through an agreement with The Agnes Irwin School, an artificial turf playing surface was installed at the park and later followed by the installation of lights. Installed by FieldTurf, the field is lined for various sports and adds another dimension to the park allowing for year-round use of the field. Groups and sports teams are eligible to use the field by submitting a usage request form to the Recreation Department. When not in use by permitted groups, the field is open for public usage.

FEATURES & AMENITIES

Radnor Memorial Park is located off of Matsonford Road and King of Prussia Road, near Archbishop John Carroll High School and Radnor Elementary School. This park features a large, multipurpose athletic turf field, lights, fitness walking path, comfort station, and benches. The hiking path extends across an elevated footbridge that spans Matsonford Road to Radnor Elementary School and continues to Radnor Nature Park.



- Athletic Turf Field/Lights
- Walking Path
- Water Fountain
- Bathroom Facility Code Access 1-2-3
- Parking

RADNOR ACTIVITY CENTER AT SULPIZIO GYM

125 South Wayne Avenue, Wayne • Ward: 3

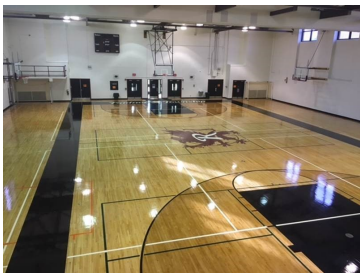
HISTORY

Originally built in the 1939 as a Federal Works Agency and Public Works Administration project, Radnor Activity Center at Sulpizio Gym (RAC) was once part of Radnor High School and used as their gymnasium. When the high school moved to its current location in 1958, the school and gym were used as part of Radnor Middle School. When Radnor Middle School was demolished in 2007 to build a new school, the gymnasium remained and was leased to the Township by the School District. The facility is now managed by the Recreation Department and used for indoor programming and various community activities. The RAC adds a broader dimension to the programming capabilities of the Recreation Department and is a great asset that is available to everyone in the community. The building was named in honor of Louis J. Sulpizio, a former educator, coach, and administrator with Radnor Township School District. He joined the school district in 1951 and during his tenure, he taught history, coached all sports, and retired as the Radnor Middle School Assistant Principal in 1983.



FEATURES & AMENITIES

The Radnor Activity Center at Sulpizio Gym is located in downtown Wayne, behind Radnor Fire Company. The RAC is a full size, multipurpose gymnasium that is home to a variety of the Recreation Department's indoor programs, including Radnor Youth Basketball, summer camps, and other seasonal programming. The size and open layout of the facility make it ideal for many sports and programs including basketball, soccer, floor hockey, multi-sport programs, fitness classes, and special events. The RAC's amenities also include restrooms and a multipurpose party room. The facility is available to rent by residents and various groups that wish to use the space for games, practices, and events. The Recreation Department also offers birthday parties at the facility. In 2015 and 2016, major renovations took place including a fully redesigned floor, new scoreboards, basketball backboards, and bleachers.



- Basketball Court
- Multipurpose Gymnasium
- Small Multipurpose Room
- Bleachers
- Bathrooms
- Parking

NORTH WAYNE PARK

North Wayne & Beechtree Avenue, Wayne • Acres: 4.2 • Ward: 1

HISTORY

North Wayne Park, also known as Seneca Egbert Field, is owned by Radnor Township School District (the park is leased to Radnor Township). At one time, this area was used as an athletic field for the Merryvale Athletic Association, Radnor Cricket Club, and the Radnor Country Club. The very first Radnor/Lower Merion high school football rivalry game was played here in 1897. Seneca Egbert, a local physician/member of the North Wayne Protective Association/Township Board of Health, was an advocate for securing the land for recreational use and convinced RTSD to purchase it 1936 for use as athletic fields. The NWPA presented a plaque to honor Egbert in 1940 for his contribution to the community following his death in 1939. A 0.036 acre area walkway entrance to the park along West Beechtree Lane known as Merryvale Park, presumably to honor one time users of the land, is owned by Radnor Township.



FEATURES & AMENITIES

North Wayne Park is located at North Wayne Avenue and West Beechtree Lane and abuts the SEPTA railroad tracks. A multipurpose athletic field and baseball field make up 4.2 acres of open green grass. North Wayne Park also features a playground with an array of amenities, including kid and adult swings, an all-purposed climber and benches. The rear entrance walkway located along North Wayne Avenue features an off-street parking lot. The playground was installed in 1999 and other improvements, including an expanded parking lot, were made to add another dimension to this neighborhood park.

- Athletic Field
- Ball Field
- Playground
- Parking



ODORISIO PARK

418 Fairview Road, Wayne • Acres: 25 • Ward: 6

HISTORY



Formerly a quarry and sometimes known as “Quarry Park”, Odorisio Park was purchased by the Township in 1962. The land that currently makes up Odorisio Park was originally two parcels of land. One part was owned by the Township and the wooded portion of park near Maplewood Road was owned by Radnor School District as a potential site to build a new elementary school. When the School District decided not to build on the land, the Township purchased the parcel to create the 25 acres that make up the park today. The park was named in 1967 for Rocco A. Odorisio, a former Township commissioner from the 6th ward who was first elected in the 1950’s. The baseball field was dedicated in 2009 as Ralph DiMaio Field in honor of the work he did in the area and his contributions to the Little League and American Legion baseball programs for over 50 years.

FEATURES & AMENITIES



Odorisio Park is a large 25 acre park located on West Wayne Avenue between Highland Avenue and Atlee Road. Its beautiful, manicured grasses contain both a baseball field and multipurpose athletic field. Gentle hills provide a seating area for the baseball diamond or just the perfect spot to take in the surrounding greenery of the park. Odorisio Park also features an outdoor basketball court and a black top area that is suitable for street hockey. This park also has a playground, restrooms, and three off-street parking lots.

- Athletic Field
- Ball Field
- Basketball Court
- Playground
- Bathroom Facility Code Access 1-2-3
- Parking



PETRIE PARK

107 Petrie Avenue, Bryn Mawr • Acres: 0.11 • Ward: 5

HISTORY

Once the site of an old rooming house, the land that now makes up Petrie Park was purchased by the Township in November of 1999. After the house was torn down and the site was developed, the park formally opened in December of 2000. This small, pocket park is enjoyed by the Rosemont neighborhood in which it is located and has been a wonderful addition to the Radnor Township’s parks system.



FEATURES & AMENITIES

Petrie Park is the definition of a community treasure. This hidden gem is a safe place for the children of the surrounding neighborhood to escape for great fun and to be outdoors. The main feature of this small pocket park is the playground. The playground contains swings, a sliding board, and newly installed we-saw. There is also a picnic table and benches to sit and enjoy this great little slice of nature. While the park is small, there is still ample space for many children to run around and play.



- Playground
- Parking along Petrie Avenue